

Frontal Brain Asymmetry and Willingness to Pay

Ramsøy, Thomas Zoëga; Skov, Martin; Klindt Christensen, Maiken; Stahlhut, Carsten

Document Version

Final published version

Published in:

Frontiers in Human Neuroscience

DOI:

[10.3389/fnins.2018.00138](https://doi.org/10.3389/fnins.2018.00138)

Publication date:

2018

License

CC BY

Citation for published version (APA):

Ramsøy, T. Z., Skov, M., Klindt Christensen, M., & Stahlhut, C. (2018). Frontal Brain Asymmetry and Willingness to Pay. *Frontiers in Human Neuroscience*, 12, Article 138. <https://doi.org/10.3389/fnins.2018.00138>

[Link to publication in CBS Research Portal](#)

General rights

Copyright and moral rights for the publications made accessible in the public portal are retained by the authors and/or other copyright owners and it is a condition of accessing publications that users recognise and abide by the legal requirements associated with these rights.

Take down policy

If you believe that this document breaches copyright please contact us (research.lib@cbs.dk) providing details, and we will remove access to the work immediately and investigate your claim.

Download date: 04. Jul. 2025

Frontal Brain Asymmetry and Willingness to Pay

Thomas Zoëga Ramsøy, Martin Skov, Maiken Klindt Christensen, and Carsten Stahlhut

Journal article (Publisher's version)

Please cite this article as:

Ramsøy, T. Z., Skov, M., Klindt Christensen, M., & Stahlhut, C. (2018). Frontal Brain Asymmetry and Willingness to Pay. *Frontiers in Human Neuroscience*, 12, [138]. DOI: 10.3389/fnhins.2018.00138

DOI: [10.3389/fnhins.2018.00138](https://doi.org/10.3389/fnhins.2018.00138)

Open Access statement:

Copyright © 2018 Ramsøy, Skov, Christensen and Stahlhut. This is an open-access article distributed under the terms of the Creative Commons Attribution License (CC BY). The use, distribution or reproduction in other forums is permitted, provided the original author(s) and the copyright owner are credited and that the original publication in this journal is cited, in accordance with accepted academic practice. No use, distribution or reproduction is permitted which does not comply with these terms.

<https://www.frontiersin.org/articles/10.3389/fnhins.2018.00138/full>

Uploaded to [CBS Research Portal](#): January 2019



Frontal Brain Asymmetry and Willingness to Pay

Thomas Z. Ramsøy^{1,2,3*}, Martin Skov³, Maiken K. Christensen³ and Carsten Stahlhut⁴

¹ Neurons Inc., Holbæk, Denmark, ² Singularity University, Sunnyvale, CA, United States, ³ Center for Decision Neuroscience, Department of Marketing, Copenhagen Business School, Frederiksberg, Denmark, ⁴ Section for Cognitive Systems, Department of Informatics and Mathematical Modelling, Technical University of Denmark, Kongens Lyngby, Denmark

OPEN ACCESS

Edited by:

Peter Lewinski,
University of Oxford, United Kingdom

Reviewed by:

Ale Smidts,
Erasmus University Rotterdam,
Netherlands
Dominika Basaj,
Warsaw University of Technology,
Poland

*Correspondence:

Thomas Z. Ramsøy
thomas@neuronsinc.com

Specialty section:

This article was submitted to
Neural Technology,
a section of the journal
Frontiers in Neuroscience

Received: 26 May 2017

Accepted: 20 February 2018

Published: 13 March 2018

Citation:

Ramsøy TZ, Skov M, Christensen MK
and Stahlhut C (2018) Frontal Brain
Asymmetry and Willingness to Pay.
Front. Neurosci. 12:138.
doi: 10.3389/fnins.2018.00138

Consumers frequently make decisions about how much they are willing to pay (WTP) for specific products and services, but little is known about the neural mechanisms underlying such calculations. In this study, we were interested in testing whether specific brain activation—the asymmetry in engagement of the prefrontal cortex—would be related to consumer choice. Subjects saw products and subsequently decided how much they were willing to pay for each product, while undergoing neuroimaging using electroencephalography. Our results demonstrate that prefrontal asymmetry in the gamma frequency band, and a trend in the beta frequency band that was recorded during product viewing was significantly related to subsequent WTP responses. Frontal asymmetry in the alpha band was not related to WTP decisions. Besides suggesting separate neuropsychological mechanisms of consumer choice, we find that one specific measure—the prefrontal gamma asymmetry—was most strongly related to WTP responses, and was most coupled to the actual decision phase. These findings are discussed in light of the psychology of WTP calculations, and in relation to the recent emergence of consumer neuroscience and neuromarketing.

Keywords: willingness to pay, electroencephalography, neuroimaging, consumer neuroscience, neuromarketing, neuroeconomics

INTRODUCTION

How do we decide how much we are willing to pay for a product? What are the basic mechanisms underlying such computations? In economics and the consumer sciences, one central concept in this regard is the Willingness To Pay (WTP), defined as the maximum amount of resources that a consumer is willing to give up in exchange for an object or service being sold (O'Brien and Viramontes, 1994; Homburg et al., 2005). Research has linked WTP to the evaluation to subsequent consumer motivation and real consumption choice in as diverse consumer choices as health services (Olsen and Smith, 2001), organic and healthy food products (Misra et al., 1991), country of origin effects (Loureiro and Umberger, 2003), and products that are either seen as environmentally friendly or otherwise ethically sound (Ozanne and Vlosky, 1997; Vlosky et al., 1999; De Pelsmacker et al., 2005).

Despite the study of WTP in such a variety of situations, little is known about the underlying neural or psychological processes of these calculations. Recent calls for an improved understanding of the basic mental mechanisms underlying WTP calculations have proposed to include neurobiological explorations of how the brain calculates values and instigates choice behavior.

Still, in spite of the rapidly expanding research fields of neuroeconomics (Rolls, 2000; Camerer et al., 2005, 2016; Kenning and Plassmann, 2005; Rustichini, 2005; Kable and Glimcher, 2009; Wilhelms and Reyna, 2014; Levy and Glimcher, 2016), neuromarketing or consumer neuroscience (Ariely and Berns, 2010; Fisher et al., 2010; Plassmann et al., 2012, 2015; Smidts et al., 2014; Ramsøy, 2015; Hsu, 2017; Lee et al., 2017). In these multidisciplinary efforts, any exact understanding of the neural or psychological mechanisms underlying WTP calculations is still woefully lacking (Plassmann et al., 2012). In a study by Plassmann et al. (2007) it was found that activation in both the right ventromedial prefrontal cortex (vmPFC) and the right dorsolateral PFC (dlPFC) demonstrated a significant relationship to subjects' WTP. However, as the researchers noted, the exact role of the OFC and dlPFC in the calculation of WTP could not be determined. Notably, the authors speculated that based on the different connectivity that the two brain regions have, the multisensory nature of OFC could point to a role in the immediate valuation of items (Rolls, 2000, 2004), while the dlPFC could be more involved in the execution of choice behavior (Petrides and Pandya, 1999). More recent accounts also support a dissociation between value calculation and choice execution (and choice conflict) between the OFC and regions such as the ACC and dlPFC (Plassmann et al., 2010; Rushworth et al., 2012).

The study reported here was set up to explore the possible role of prefrontal hemispheric differences in computing WTP. The notion that the computation of WTP may rely on a diverse contribution from the two hemispheres is rooted in a growing body of work demonstrating a prefrontal asymmetry in relationship to approach and avoidance behaviors. The main findings emerging from this research are that approach behaviors are related to a relative stronger engagement of the left PFC compared to the right PFC (Pizzagalli et al., 2005), and that such effects are mainly due to motivation and not valence (Harmon-Jones and Allen, 1998). The left-hemispheric dominance for approach behaviors has also been suggested in studies of consumer choice (Ravaja et al., 2012), as well as advertising (Ohme et al., 2009, 2010). However, there is still conflicting evidence with regard to the hemispheric asymmetry model (Spielberg et al., 2008), and studies on the inverse effect of stronger relative engagement of the right compared to left PFC in avoidance behavior has been less consistent (Harmon-Jones and Allen, 1998). Interestingly, in the Plassmann et al. study we cited above (Plassmann et al., 2007), although the subjects were not explicitly tested for prefrontal asymmetry, the increased activations in the vmPFC and dlPFC were exclusively located in the right hemisphere.

In the present study, by asking subjects to watch images of different products while prefrontal asymmetry was assessed using electroencephalography (EEG), we find that a prefrontal laterality index obtained during passive product viewing is highly related to subsequent WTP reports. Notably, while prior EEG studies have focused on prefrontal asymmetry effects using alpha

frequency, our results show that gamma frequency and beta frequency can have equal or even stronger relationship to choice behavior.

MATERIALS AND METHODS

Sixteen women (age range 19–51, mean/std = 27.1/8.2, all right handed) were recruited using both online (www.forsogsperson.dk and www.videnskab.dk) and direct recruitment procedures. The study reported here was part of a larger cohort study on compulsive consumption ($n = 63$), but for the present study we only included subjects who did not meet diagnostic criteria for compulsive consumption, or the preclinical compensatory consumption stage, as assessed by the Compulsive Buying Scale (Faber and O'Guinn, 1992). All subjects read and signed an informed consent, and were initially informed and trained with the experimental procedure. The study was approved by the local ethics committee (at Copenhagen Business School) and abided to the regulations of the Declaration of Helsinki.

Experimental Design

Subjects were placed in front of a screen running with a $1,920 \times 1,200$ pixel screen resolution, and were placed at an approximate distance of 60 cm from the screen. During the test, subjects first saw a fixation cross for 3 s, followed by an image of a product from one of four categories; bags, clothes, women's shoes, and fast-moving consumer goods (FMCG). The individual product was shown for 3 s, after which asked to report how much they would like to pay for the product, using an on-screen visual analog scale ranging from zero to 2,000 Danish Kroner ($\approx \$330$). The experimental design is illustrated in **Figure 1**. In total, each participant was exposed to 40 trials, 10 trials in each product category (bags, clothes, FMCG, shoes). To increase the external validity of the test, subjects were instructed that the choices from two of the subjects from the cohort would be randomly selected and given 1,500 DKK each, and that five of each subject's choices would be randomly selected, and the product receiving the highest bid of those five would be realized. Should the highest bid not amount to 1,500 DKK, they would be paid the remaining amount in cash. This meant that subjects were motivated to optimize their product choices, which allowed us to better estimate the actual WTP, instead of subjective estimates of WTP. While this approach allowed the opportunity for participants to employ certain decision strategies such as selecting the minimally possible difference in price to signify preference (e.g., 2 DKK for the preferred item, relative to 1 DKK for non-preferred items) and retain the remaining amount in cash, no such strategy was found in the WTP choices made. In total, 640 observations were made (16 participants, 40 WTP decisions each).

Since the WTP scores were not normally distributed (Kolmogorov-Smirnov-Lilliefors test $D = 0.276$, $p < 0.01$), we chose to log transform the WTP score to achieve normal distribution of the WTP data, thus providing a logWTP score (producing a normal distribution of KSL test $D = 0.071$, $p = 0.201$), which we used in all analyses.

Abbreviations: EEG, electroencephalography; WTP, Willingness to Pay; PAI, Prefrontal Asymmetry Index.

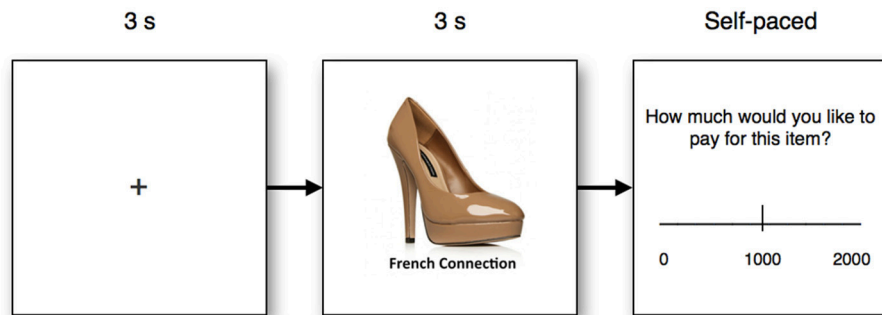


FIGURE 1 | Experimental design. Subjects first saw a fixation cross for 3 s, followed by a product with accompanying brand information for 3 s. The product image was accompanied by the brand name of the product. Finally, subjects chose the amount of money (Danish kroner) they were willing to pay for the product using a visual analog scale, and in a self-paced manner.

Neuroimaging

Neural responses were recorded using a wireless 14 channel headset (Emotiv EPOC Inc.) with a sampling rate of 128 Hz (bandwidth = 0.2–43 Hz, digital notch filters at 50 and 60 Hz, and with built-in digital 5th order Sinc filter) and electrodes positioned at AF3, F7, F3, FC5, T7, P7, O1, O2, P8, T8, FC6, F4, F8, AF4 (the 10–20 system, see **Figure 2**). The headset was connected to a PC running Windows 7 and transmitted data wirelessly to a USB receiver module. Stimulus presentation and data collection for behavioral responses and neuroimaging data was performed using Attention Tool 4.5 (iMotions, www.imotionsglobal.com).

Offline data processing was carried out using the EEGLAB toolbox in Matlab. Baseline correction was performed on the entire recording to minimize potential drifts of electrodes. To avoid influence of bad channels affecting the analysis, the quality of each electrode was evaluated during the whole recording. Channel quality was provided for each sample with the Attention Tool 4.5 software with a categorization between 1 and 4 corresponding to no connection (poor) to good contact, respectively. In the analysis we declared an electrode as bad if the channel quality did not fulfill a criterion of having minimum 95% good channel quality during the whole recording. Bad channels were rejected from further analysis. In this study, we observed an average signal quality of 84.42 ± 0.20 st.dev percent, with some channels providing 100% average signal quality (AF3, F7, T7, and F8) while other channels produced the lowest average signal quality, and with large variation across individuals (average \pm st.dev: O1 = $46.92 \pm 49.91\%$, O2 = $41.06 \pm 49.19\%$). The channels of most interest for this study produced signal quality well above acceptable levels (F3 = $82.40 \pm 38.08\%$, F4 = $94.13 \pm 23.50\%$). Only participants with valid data for the F3 and F4 electrodes were used in the study.

Power spectra were calculated on each electrode using windows of 50 samples (i.e., 390 ms) with a 80% overlap and a frequency resolution of 1 Hz. The power spectra were reduced to frequency bands in accordance with the alpha, beta, and gamma frequency bands, defined as alpha [8–13 Hz], beta [13–25 Hz], and gamma [25–40 Hz]. Each band was calculated as a summation of the total power within the band.

For each electrode alpha, beta and gamma frequencies were included in the analysis. The prefrontal asymmetry index (PAI) was calculated by subtracting the values from the AF4 (right prefrontal) electrode from the AF3 (left prefrontal) electrode, and divided by the sum of the two electrodes. This is illustrated by the following formula:

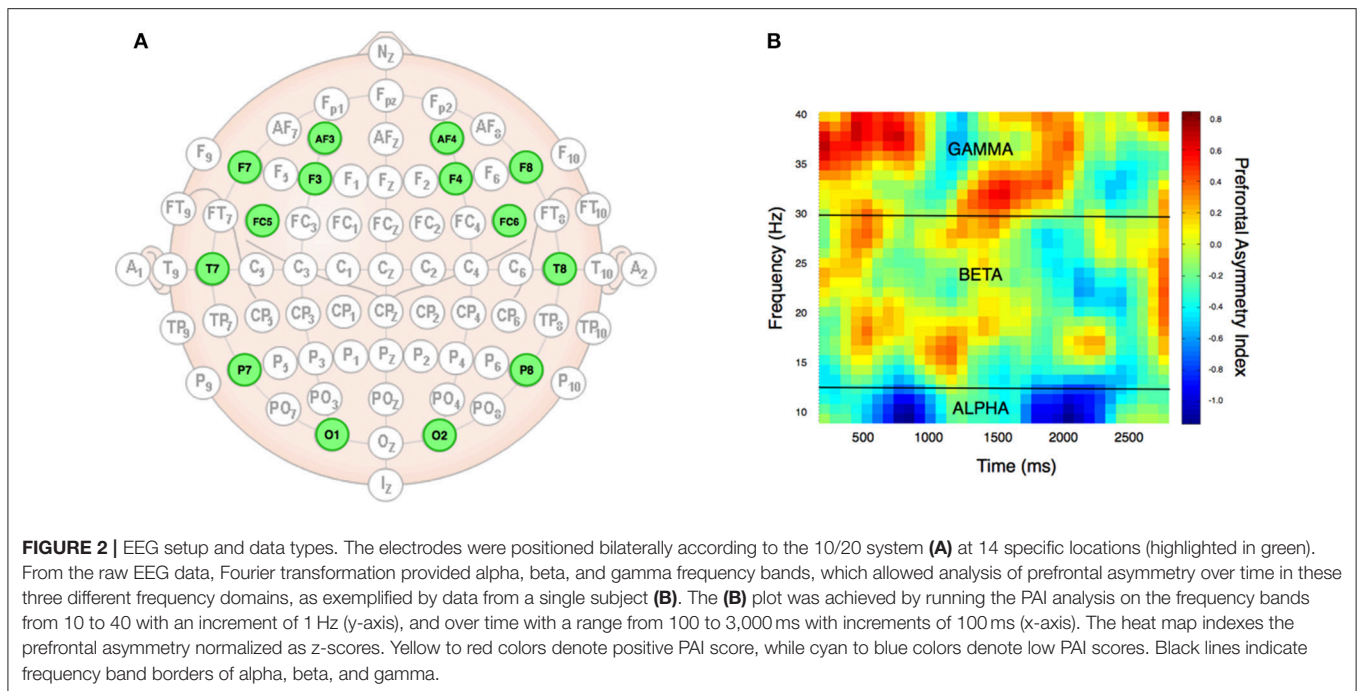
$$\frac{\log(AF_3) - \log(AF_4)}{\log(AF_3) + \log(AF_4)}$$

This means that for gamma (PAI_γ) and beta (PAI_β) frequencies, more positive values would be indicative of stronger engagement of the left PFC, and that more negative values would be related to relative stronger engagement of the right PFC. The frontal asymmetry was corrected for overall brain engagement by dividing the F3/F4 ratio on the sum of both channels (F3+F4). The alpha frequency has been linked to inhibitory brain function and is thus assumed to be negatively related to neural activation levels (Başar et al., 2001; Palva and Palva, 2007). The alpha measure (PAI_α) has an inverse sign to that of gamma and beta; thus, more negative values would be indicative of relative stronger engagement of the left PFC.

We first ran a mixed model with logWTP as the dependent variable, with the prefrontal asymmetry for each frequency (PAI_α , PAI_β , and PAI_γ) for the aggregate response of the 3 s product viewing time as independent variables, and with subject as random factor. To increase the specificity of the prefrontal activation, all alpha, beta, and gamma electrode values (F7, F3, FC5, T7, P7, O1, O2, P8, T8, FC6, F4, and F8) were modeled as regressors of no interest. This was imposed to increase the specificity of the frontal asymmetry measure.

Following this, we tested whether the inclusion of product type would improve the overall explanatory value of the model. To this end, we ran a new mixed model analysis with logWTP as the dependent variable, and with product category (FMCG, clothing, shoes, bags), prefrontal asymmetry (PAI_α , PAI_β , and PAI_γ) and the category*PAI interactions as independent variables, again with subject as random factor.

To record and correct for the degrees of freedom used in denominator of each test, we use the term “Degrees of Freedom



for the Denominator” (DFDen). The DFDen is calculated using the Kenward–Roger first order approximation (Kenward and Roger, 1997), and shows the denominator degrees of freedom for the effect test (the degrees of freedom for error).

We were interested in testing whether the relationship between prefrontal asymmetry and WTP would be modulated by stimulus duration (and, consequently, the time to decision). We therefore ran a mixed model analysis with logWTP (hereafter WTP) as the dependent variable, and with time, prefrontal asymmetry (PAI_{α} , PAI_{β} , and PAI_{γ}) and the time*PAI interactions as independent variables, and with subject as random factor.

Finally, to test for other types of EEG responses related to WTP, we tested the relationship between all electrodes in the alpha, beta and gamma frequency bands, and their relationship to WTP, using a mixed model where logWTP was the dependent variable, each electrode alpha, beta, and gamma values were used as independent variables, subject was used as a random factor, and product category as a regressor of no interest.

RESULTS

Products received an average WTP of 202.25 Danish Kroner (DKK), but also demonstrated a large variance (STD = 339.36; range = 0:1627.9 DKK). There was a significant difference between the four product categories in logWTP score ($R^2 = 0.452$, $F = 41.1$, $p < 0.0001$) that was driven by a lower logWTP for FMCG (4.51 ± 0.01) than the other product categories (bags = 6.33 ± 0.01 ; clothing = 6.03 ± 0.01 ; shoes = 5.98 ± 0.01).

In our first mixed model analysis, we tested the effect of prefrontal asymmetry during product viewing on subsequent

WTP. The overall model was significant ($R^2 = 0.267$, RMSE = 0.999, $F = 5.37$, $p = 0.0013$). As **Table 1** shows, only PAI_{γ} showed a statistically significant effect, while PAI_{β} was trend significant, and PAI_{α} did not produce a significant result.

Looking at the individual effects, and as shown in **Figure 3**, (PAI_{γ} $R^2 = 0.270$, RMSE = 0.996, estimate = 0.161, $t = 2.92$, $p = 0.0038$) was positively related to WTP, i.e., more positive values were related to higher WTP. Similarly, PAI_{β} , although not reaching statistical significance, showed a trend for a positive relationship to WTP ($R^2 = 0.273$, RMSE = 0.993, estimate = 0.161, $t = 1.67$, $p = 0.0967$), which means that stronger engagement of the left PFC in beta frequency band was related to higher WTP. Finally, PAI value in the alpha range ($R^2 = 0.276$, RMSE = 0.992, estimate = -0.085 , $t = -1.07$, $p = 0.2858$) was negatively related to WTP, but did not produce a significant result. Although not significant, this result lends support to the frontal asymmetry and WTP, as more negative PAI_{α} values (i.e., stronger relative engagement of the left PFC, due to the inverse aspect of the alpha frequency relative to brain activity) were related to higher WTP scores.

When analyzing PAI_{α} , PAI_{β} , and PAI_{γ} independently, the relationship was significantly for PAI_{β} and PAI_{γ} only (alpha: $t = -1.07$, $p = 0.286$; beta: $t = 2.11$, $p = 0.036$; gamma: $t = 3.55$, $p = 0.0004$). Further analyses into the relationship between the three asymmetry scores demonstrated the following interrelationships: correlation between alpha and beta: $r = 0.286$, $p < 0.0001$; alpha and gamma: $r = -0.132$, $p = 0.0009$; beta and gamma: $r = 0.202$, $p < 0.0001$). In effect, this suggests that we find a positive relationship between PAI_{α} and PAI_{β} , and between PAI_{β} and PAI_{γ} , while we find a negative relationship between PAI_{α} and PAI_{γ} .

In the second analysis, the main effect of product category and interactions with the PAI scores were included in the mixed model analysis. The overall model was highly significant ($R^2 = 0.641$, $F = 19.15$, $p < 0.0001$). As shown in **Table 2**, only the category*PAI interactions were significantly related to subsequent WTP. Notably, when category was included in the analysis, PAI_β showed neither a significant main effect or interaction with category, while PAI_γ showed both a main effect and interaction effect with category. Looking further into this interaction effect, we find that PAI_γ is significantly positively related to logWTP for bags ($t = 2.38$, $p = 0.018$) and shoes ($t = 1.66$, $p = 0.845$), and that for FMCG there is a significant negative relationship ($t = -2.80$, $p = 0.006$), while clothing did not show a significant relationship ($t = -0.19$, $p = 0.845$).

A control analysis was run to test the added value of neuroimaging data on product category in explaining WTP. We first ran a mixed model with product category alone, which yielded a significant model ($R^2 = 0.452$, $F = 79.04$, $p < 0.0001$). We then included the full model with EEG scores but without interaction effects, and found that the overall explanatory value of the model increased ($R^2 = 0.641$, $F = 19.15$, $p < 0.0001$), suggesting that the addition of EEG provided an increase in explanatory power of WTP. To test whether neuroscience data provided a significantly improved explanatory power, we ran a Chow F -test (Chow, 1960) on the pseudo- R values, which yielded a significant result ($F = 1.73$, $p = 0.0464$), suggesting that there was a significant additional explanatory value of adding the EEG data to the model.

TABLE 1 | Main effects of laterality on WTP.

Term	Estimate	Std Error	DFDen	T	p
Intercept	6.052	0.166		36.55	<0.0001*
logALPHA	-0.108	0.083	172.9	-1.31	0.1914
logBETA	0.161	0.096568	281.7	1.67	0.0967
logGAMMA	0.165	0.05665	158.1	2.92	0.0038*

Independent relationship between each PAI measure and subsequent WTP for products. Asterisk denotes significant effects at $p < 0.01$.

Our final analysis tested whether the relationship between prefrontal asymmetry and WTP would be modulated over time. Our mixed model analysis testing the interaction between time and PAI scores for each frequency demonstrated a significant explanatory effect ($R^2 = 0.299$, $p < 0.0001$) with significant interaction effects only for the gamma frequency (PAI_γ , see **Table 3**). As shown in **Figure 4**, the relationship between PAI_γ and WTP was higher for longer stimulus durations, i.e., the closer subjects were to making the actual decision. To test whether the relationship between PAI_γ and WTP was significant already at stimulus onset, we ran a *post-hoc* mixed model analysis with WTP as the dependent variable, and with PAI_γ during the first second as the independent variable and with subject as random factor. This showed that even during the first second of product viewing, PAI_γ was significantly related to WTP ($R^2 = 0.309$, $F = 41.2$, $p < 0.001$). This explanatory value was better than 2 s into product viewing ($R^2 = 0.292$, $F = 9.52$, $p < 0.001$), but less than the third second of product viewing ($R^2 = 0.315$, $F = 390.5$, $p < 0.001$).

DISCUSSION

In this study, we have found that brain responses during product viewing are significantly related to the variation in consumers' subsequent willingness to pay for the same products. At the time that subjects viewed products, measurements of prefrontal asymmetry in brain activation accounted for 27.5% of the variation in subsequent WTP. Taking product category, which explained ~45% of the variation in WTP, into account, improved the model's explanatory value to 64.1% of the variation in WTP.

These results provide novel insights into the basic psychological processes underlying WTP calculations and consumer choice. First, we find that WTP is mainly explained by prefrontal asymmetry in the gamma frequency band, and tentatively in the beta band. Second, prefrontal asymmetry in the gamma oscillation band showed an improved explanatory relationship with WTP responses the closer a subject is to making the actual decision, yet the model is still significant during the first second of product viewing. Both these effects have significant implications for our understanding of the

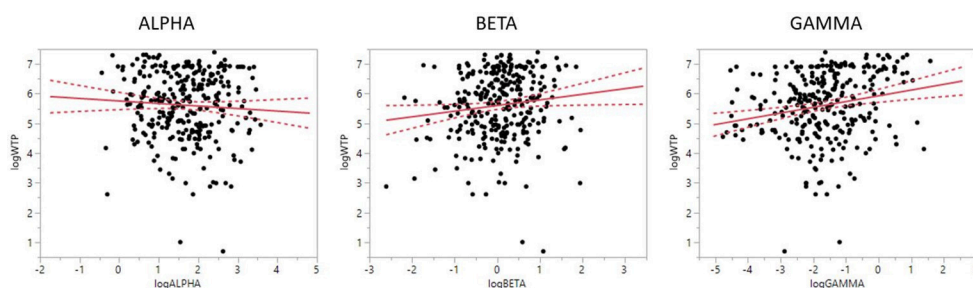


FIGURE 3 | Prefrontal laterality for alpha, beta, and gamma frequencies and WTP. Relationship between prefrontal laterality and WTP. While the alpha laterality index showed no significant relationship to WTP, gamma (and a trend for beta) demonstrated a positive relationship. Negative numbers on the laterality index (x-axis) indicate stronger right than left engagement. Please note that the higher alpha frequency band activation is inversely related to the active engagement of a brain region. Solid line indicates mean value, dotted line indicates 95% CI.

TABLE 2 | Effects of interaction between frequency band and product category.

Source	DF	DFDen	F	p
PAI $_{\alpha}$	1	176.2	0.8164	0.3670
PAI $_{\beta}$	1	267.4	0.7128	0.3993
PAI $_{\gamma}$	1	172.1	12.2084	0.0006*
Category* PAI $_{\alpha}$	3	262.4	0.5146	0.6726
Category* PAI $_{\beta}$	3	260.8	1.2099	0.3065
Category* PAI $_{\gamma}$	3	258.3	4.3411	0.0052*
Category	3	260.6	77.5436	<0.0001*

Interaction effects (denoted by asterisk) between PAI measures and category, showing that prefrontal asymmetry in the all ranges interacts with product category.

TABLE 3 | Effects of interaction between frequency band and time.

Source	DF	DFDen	F	p
PAI $_{\alpha}$	1	53160	34.2827	<0.0001*
PAI $_{\beta}$	1	53163	104.5560	<0.0001*
PAI $_{\gamma}$	1	53166	222.1251	<0.0001*
PAI $_{\alpha}$ *Time	1	53151	1.8140	0.1780
PAI $_{\beta}$ *Time	1	53151	0.4596	0.4978
PAI $_{\gamma}$ *Time	1	53152	26.1636	<0.0001*
Time	1	53152	20.2815	<0.0001*

Interaction effects (denoted by asterisk) between PAI measures and time, showing that prefrontal asymmetry in the gamma range, but neither alpha or beta, interacts specifically with time.

psychological mechanisms underlying WTP, and will be discussed accordingly in the following paragraphs. Finally, we discuss the extent to which these EEG measures of brain activation can be used as predictive value of consumer choice as scalable, commercial applications.

Before any further discussion of the results, three issues should be noted. First, this study had a sample size of only 16 participants, a relatively small sample, in which the power of the statistics is relatively low. Further replication is needed to ensure the replicability and external validity of this study.

Second, the current study only tested women, as part of a larger study on compulsive buying behaviors in women. Although this study only tested healthy, non-compulsive consumers, the results do not yet warrant a gender-free interpretation. Thus, more studies on frontal asymmetry and consumer choice should include both women and men, and explore potential differences in asymmetric responses.

Third, in this study, we employed the Emotiv EPOC low-cost EEG system. One question could be raised about potentially lower data quality of this headset. To this end, we show that the signal quality is acceptable for the purpose of this study. This corresponds with prior studies demonstrating that this headset produces acceptable data quality and that it reproduces brain responses (both event-related potentials and frequency based responses) comparable to what has been found in studies with higher-resolution systems (Badcock et al., 2013; Grummett et al., 2014; Christopher et al., 2015; Wang et al., 2015), including emotional processing (Harmon-Jones et al., 2010; Khushaba et al., 2013), and even in mobile settings (Allison et al., 2010; Debener et al., 2012). This said, further support from these findings is needed from studies using high-resolution EEG and other neuroimaging approaches.

Effects of Separate Activity Types

The present results provide novel insights into the mechanisms of prefrontal asymmetry and their relevance to consumer choice. Prefrontal EEG asymmetry, typically reported in the alpha-band range (PAI $_{\alpha}$), has been related to cognitive and emotional processes (Harmon-Jones and Allen, 1998; Pizzagalli et al., 2005; Ohme et al., 2009, 2010; Ravaja et al., 2012). Our results contradict these findings by showing that there was no significant relationship between frontal asymmetry in the alpha

band and WTP decisions, even when this frequency was studied in isolation. This finding is significant, as it may suggest a specific nuance in the way that alpha band asymmetry should be interpreted in light of particular types of decision-making, and our understanding of the neurobiological mechanisms underlying the mental calculations necessary for reaching a final decision on what to pay for a specific product.

Alpha oscillations are classically related to activation decrease or inhibition of neural activation, even as an “idling rhythm” of the brain (Coan and Allen, 2003; Roche, 2004; Sauseng et al., 2005; Händel et al., 2011; Smith et al., 2017; van Diepen and Mazaheri, 2017). However, recent reports have also implied a more complex functional role of the alpha band, such as divergent thinking (Benedek et al., 2011), tonic alertness (Sadaghiani et al., 2010), and mirror neuron function (Oberman et al., 2005). Notably, Sabate et al. (2012) reported a dual nature of alpha oscillations with respect to attention, in that alpha was both related to attentional boosting of selected task calculations while decreasing the computation of other potentially interfering tasks. In the present context of prefrontal asymmetry, prior studies have linked changes in prefrontal alpha band asymmetry to approach behaviors, including reward expectancy and decision making (Miller and Tomarken, 2001), and individual traits such as reward sensitivity (Pizzagalli et al., 2005) and obesity (Ochner et al., 2009). Taken together, this suggests that the change in PAI $_{\alpha}$ may be related to multiple roles throughout the period of product viewing, including approach behavior and attentional gating, but not necessarily something that is crucial for making value-based decisions that manifest as WTP decisions. Notably, as PAI $_{\alpha}$ was not affected by product viewing time, it is possible that frontal asymmetry in the alpha frequency band is not involved in the calculations of here-and-now calculations of product value, neither at the immediate evaluation level, or during choice execution. Our findings thus challenges and nuances research on frontal alpha asymmetry and approach behavior by demonstrating that it is not related to particular choice behaviors, and by suggesting that further studies are needed to delineate the link between the neurobiology of approach behavior and consumer choice.

A novel finding was that prefrontal asymmetry in the gamma range, and tentatively in the beta range, was significantly related to WTP choices. Prefrontal asymmetry in the beta range (PAI $_{\beta}$)

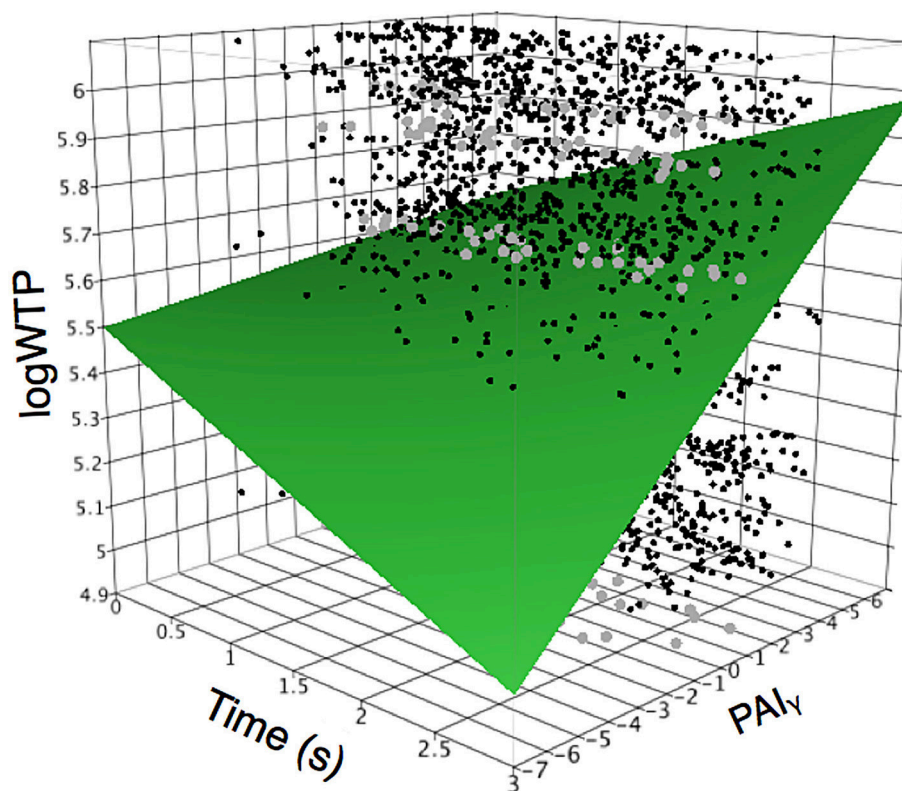


FIGURE 4 | Interactions between time and gamma on relationship to WTP. Relationship between prefrontal gamma laterality (PAI_{γ}) and time demonstrates that the laterality effect is strongest at the end of product viewing time, and smallest during the first period of product viewing. The plot shows the interrelationship between time from stimulus onset, PAI_{γ} , and logWTP, and how the relationship between PAI_{γ} and logWTP changes with time. In particular, note that at the time of stimulus onset (time is low) the PAI_{γ} is only weakly positively related to logWTP, while at higher time score (stimulus has been displayed for longer time, and the participant is closer to making a choice) the relationship between PAI_{γ} and logWTP is dramatically more positive. Dots denote actual data points, where black dots represent single data points, and gray dots represent multiple converging data points.

was only trend significant and thus brings a low explanatory value in relating to WTP, yet provides interesting and significant trends that should be explored further. To our knowledge, this is also the first demonstration of in PAI_{β} in value-based decision-making. Previous studies have demonstrated a link between beta frequency and subjective preference, such as Boksem and Smidts (2015), in which frontal beta during movie trailers were found to be significantly correlated with subsequent individual preference judgments. However, here, as in other studies of beta and choice (Polanía et al., 2014; Chand et al., 2016; Jo et al., 2016), no frontal beta asymmetry was reported, and was not part of the aims of the study. In this study, PAI_{β} demonstrated a negative relationship with WTP. This suggests that stronger left vs. right prefrontal asymmetry is related to a lower subsequent willingness to pay for a product. Despite the relative small size of this effect, this finding is unexpected and warrants further studies. Beta band activation in general has been linked to somatosensory and somatomotor functions (Cebolla et al., 2009; Ritter et al., 2009), language processing (Spironelli and Angrilli, 2010; Wang et al., 2012; Weiss and Mueller, 2012), and in complex decision-making and every-day behavior (Davis et al., 2011). Notably, beta oscillations have recently been implicated in perceptual

decision making. For example, by using local field potential EEG in monkeys while they performed a comparison decision task, Haegens et al. (2011) found that beta oscillations during an evaluation and comparison phase were related to subsequent choice behavior. This may suggest a role for beta oscillations in comparing choice options, and that prefrontal asymmetries in this frequency band are related to value-based consumer choices. However, the observed effects in our own data showed unexpected features such as an inverse prefrontal asymmetry effect and no effect of viewing time. Interestingly, PAI_{β} did not change with higher proximity to the choice execution. This is at odds with recent studies that have linked beta to the decision to move (Jo et al., 2016). Also, a recent study by Boksem and Smidts (2015) showed that general beta synchrony was predictive of consumer preference and subsequent choice, suggesting a general frontal beta engagement in consumer choice. However, such research has pointed to beta being more related to a meta-cognitive aspect of decision-making (Chand et al., 2016), and for frontal theta, see Wokke et al. (2017). As the aim of the present study was to study the asymmetric frontal engagement of the brain, it is not an appropriate model for studying general beta-related activity related to the time of

choice. Consequently, more studies are needed to understand the function of prefrontal beta oscillations with respect to consumer choice.

A substantial prefrontal asymmetry effect was found in the gamma oscillation band (PAI_γ). Gamma synchrony is thought to represent a specific kind of activation, and is believed to play an important role in the synchronization within functional units, integrating proximate or distant functional units, and can do so in a time-locked or phase-locked manner (Başar et al., 1999). Gamma activation has been shown to relate to a number of cognitive processes, including object recognition (Schadow et al., 2009; Castelhana et al., 2014; Ahlfors et al., 2015), memory types (Başar et al., 1999, 2001; Nyhus and Curran, 2010; Roux and Uhlhaas, 2014; Heusser et al., 2016; Després et al., 2017), and conscious processing (Aru and Bachmann, 2009; Doesburg et al., 2009; Luo et al., 2009; Steinmann et al., 2014; Cabral-Calderin et al., 2015; Tu et al., 2016). Most notably, gamma has been linked to the functional coupling—or binding—of brain regions that ensures integration and appropriate processing of information (Klimesch et al., 2010; Ehm et al., 2011; Schneider et al., 2011). This may suggest that the observed effects of PAI_γ on WTP may be related to a specific kind of value computation and possibly the link to choice execution. Notably, in a study by Ravaja et al. (2012), frontal asymmetry was found to predict consumer choice in the face of changes in price and brand provided. However, as this asymmetry was focused on alpha, we believe that our study is the first demonstration of a role for frontal asymmetric gamma oscillations in consumer choice. Moreover, as this study was for a particular type of value computation—the specific monetary valuation of products. Thus, these findings show that, besides not confirming the traditional asymmetry index in the alpha range, gamma is strongly related to consumption behavior, thus suggesting specific psychological mechanisms (for gamma and to some extent beta) in WTP calculations.

An exploratory whole-brain analysis was conducted to test for other types of EEG responses related to WTP, and the results are shown in Table 4.

Frontal Asymmetry and Product Category

Not surprisingly, since we tested products such as FMCG products and luxury goods, WTP was significantly affected by product category. However, a notable observation was that the explanatory power of frontal asymmetry in different frequency bands were affected when product category was used as a regressor in the analysis. First, asymmetry in the beta frequency was unaffected by product category, and the main effect of this frequency became insignificant (not even a trend) when product category was included as a covariate in the regression model. This suggests that asymmetry in the beta range is possibly even less important in WTP evaluations and choice, and caution should be emphasized when interpreting even the main effect for beta frequency asymmetry.

Conversely, frontal asymmetry in the gamma range was significantly influenced by product category. Bags and shoes showed a significant positive relationship to WTP, in that higher asymmetry scores (stronger left than right asymmetric engagement) were associated with a higher willingness to pay

TABLE 4 | Whole-brain analysis of alpha, beta, and gamma synchrony and WTP.

Channel/frequency	Estimate	Std. Error	df	T	p
ALPHA					
AF3	0.00004	0.00013	9,865	0.31	0.7593
AF4	−0.00035	0.00012	9,866	−2.80	0.0051
F3	−0.00059	0.00017	9,863	−3.54	0.0004
F4	0.00156	0.00029	9,867	5.46	<0.0001
F7	0.00025	0.00019	9,864	1.31	0.1918
F8	0.00008	0.00006	9,862	1.39	0.1635
FC5	0.00040	0.00043	9,867	0.92	0.358
FC6	−0.00020	0.00040	9,868	−0.49	0.6227
O1	0.00012	0.00066	9,867	0.18	0.8557
O2	0.00043	0.00021	9,870	2.08	0.0373
P7	−0.00117	0.00155	9,869	−0.76	0.4482
P8	−0.00016	0.00003	9,870	−4.58	<0.0001
T7	−0.00001	0.00041	9,874	−0.03	0.9731
T8	0.00001	0.00003	9,872	0.22	0.828
BETA					
AF3	−0.00003	0.00015	9,844	−0.18	0.8533
AF4	−0.00021	0.00014	9,847	−1.48	0.1383
F3	−0.00023	0.00011	9,842	−2.00	0.0462
F4	0.00032	0.00049	9,846	0.65	0.5159
F7	0.00027	0.00021	9,843	1.27	0.2031
F8	0.00000	0.00004	9,842	−0.03	0.9784
FC5	0.00008	0.00031	9,843	0.27	0.7897
FC6	−0.00036	0.00054	9,844	−0.66	0.5074
O1	0.00052	0.00052	9,845	0.99	0.3208
O2	−0.00107	0.00042	9,851	−2.56	0.0105
P7	−0.00458	0.00133	9,846	−3.45	0.0006
P8	0.00021	0.00004	9,847	5.21	<0.0001
T7	−0.00003	0.00088	9,844	−0.03	0.9745
T8	0.00019	0.00006	9,848	3.24	0.0012
GAMMA					
AF3	0.00125	0.00027	9,873	4.73	<0.0001
AF4	−0.00014	0.00024	9,866	−0.60	0.5472
F3	0.01580	0.00140	9,868	11.25	<0.0001
F4	−0.00191	0.00117	9,876	−1.63	0.1024
F7	0.00128	0.00046	9,865	2.81	0.005
F8	−0.00354	0.00129	9,868	−2.74	0.0062
FC5	−0.00145	0.00115	9,868	−1.25	0.2101
FC6	−0.00242	0.00082	9,868	−2.96	0.0031
O1	−0.04786	0.00613	9,873	−7.80	<0.0001
O2	−0.00329	0.00314	9,877	−1.05	0.2943
P7	0.00052	0.00282	9,867	0.19	0.8524
P8	−0.00001	0.00001	9,866	−2.47	0.0135
T7	−0.00005	0.00009	9,870	−0.54	0.5865
T8	−0.00049	0.00025	9,879	−1.95	0.0515

Exploratory whole-brain analysis of the relationship between frequency band power for each of the electrodes and logWTP, using a mixed model analysis. Statistical significant values with a $p < 0.05$, uncorrected, are highlighted with bold text.

for the product. For clothing, no significant relationship was found. Interestingly, we find that the relationship between frontal gamma asymmetry and WTP was significantly negative for

FMCG products. That is, the higher the asymmetry (denoting a stronger left than right engagement) the lower the WTP.

Taken together, this suggests that emotional responses during product viewing show a product-specific relationship to what we are willing to pay for a product. With fashion items and products associated with “conspicuous consumption” (Kastanakis and Balabanis, 2014; Wang and Griskevicius, 2014), it may be less of a surprise that more positive emotional responses are related to a higher price point for the product (and thus possibly a lower price sensitivity). Conversely, for everyday FMCG products, higher asymmetry scores were related to a lower willingness to pay, suggesting that these products have a very different price sensitivity. However, as this study did not actively look for these types of responses, further research need to study these effects more specifically, as well as address the nature of the WTP-PAI relationship, and to the extent it is linear or show more complex non-linear properties. Research should also be conducted on groups who have different levels of interest for the products tested. In this study, we cannot rule out that the strong positive relationship between frontal asymmetry and WTP for bags and shoes is driven by our selection of women who were recruited for testing these types of products. Thus, additional studies on different consumer segments and varying product interests are needed.

Frontal Asymmetry and Proximity to Decision-Making

The assertion of a specific and independent role of prefrontal gamma asymmetry is further corroborated by our final analysis, in which we tested the interactions between PAI scores in all three frequency bands and product viewing time. Here, our data showed that the relationship between PAI_{γ} and WTP was significantly modulated by time. In particular, the closer to the actual decision, the stronger the relationship. No such effect was found for the PAI_{α} or PAI_{β} , which possibly implies a role for frontal asymmetry in the beta frequency range in more stable value calculations, and a dissociation from choice execution. This finding is closely related to recent studies demonstrating a role of the dlPFC in planning and executing the actual choice, while other regions such as the OFC and ACC are more related to the initial valuation of the choice options (Petrides and Pandya, 1999; Rolls, 2000, 2004; Plassmann et al., 2007, 2010; Rushworth et al., 2012). Future studies should seek to combine imaging techniques, such as simultaneous fMRI and EEG (Moosmann et al., 2008; Rosa et al., 2010), to reveal the specific morphological and neuropsychological nature of the different oscillations and their roles over time.

Prefrontal Asymmetry and Consumer Engagement, Motivation, and Choice

The present finding is among the first to demonstrate a significant relationship between brain activity and willingness to pay in consumer choice. Indeed, in contrast to a study on the brain basis of WTP using fMRI (Plassmann et al., 2007), our approach demonstrates the added value of EEG as an imaging modality for assessing consumer preference and choice. In addition to the insights gained from this on the basic mechanisms of

consumer choice, our results also answers calls for neuroimaging measures that assess and predict of consumer response and choice (Butler, 2008; Garcia and Saad, 2008; Murphy et al., 2008; Senior and Lee, 2008; Wilson et al., 2008; Ariely and Berns, 2010; Fisher et al., 2010; Lee et al., 2017). Indeed, great strides are currently made in the application of neuroimaging tools and neuroscience insights in understanding, measuring and affecting consumer choice. As the demand for measures of subconscious emotional and cognitive responses is currently peaking, and substantially higher than other research approaches (<http://www.greenbookblog.org/2017/06/27/the-top-20-most-in-demand-supplier-types-at-iiex-na-2017/>) it is crucial that such measures being used are thoroughly documented, validated and applied to the relevant contexts. Here, it is likely that the indexing of prefrontal asymmetry responses may hold predictive powers of consumer choice in similar as well as other contexts. Even so, studies have recently demonstrated that even in a relatively small sample, brain responses can predict not only individual choice, but even market effects, such as music hits, twitter feeds, TV ratings, and box office movie sales (Berns and Moore, 2012; Dmochowski et al., 2014; Boksem and Smidts, 2015), further supporting the idea that neuroscience can provide substantial added value to consumer research, both academically and commercially. This warrants further studies, and a few notable questions should be addressed in future research:

- What are the relationship between PAI and WTP when the duration between assessment and choice is prolonged, as in when there are hours, days, and even weeks and months between the PAI assessment and consumer choice?
- What is the relationship between frontal asymmetry in different frequency bands (alpha, beta, gamma), and how do they relate to different types of value based decision-making?
- Which brain structures are most involved in the separate effects found for prefrontal alpha, beta, and gamma oscillations? Do they represent separate mechanisms of choice in, brain regions such as the OFC, dlPFC, and ACC?
- Does the effect of time on PAI_{γ} indicate separate neural mechanisms, such as OFC during the early face and dlPFC during the late phase? Is the PAI_{γ} a carrier of information from the product evaluation point to the choice execution?
- What is the temporal unfolding of frontal asymmetry, as measured by other types of EEG analyses, such as Event-Related Potentials (ERPs)?
- What is the predictive value of frontal asymmetry on larger market effects? Is frontal asymmetry more related to individual choice, or does it also signify coherent human responses at a cultural level?

ETHICS STATEMENT

This study was carried out in accordance with the recommendations of the Copenhagen Ethics Committee with written informed consent from all subjects. All subjects gave written informed consent in accordance with the Declaration of Helsinki. The study was approved under the ethical protocol KF 01–131/03, issued by the local ethics committee.

AUTHOR CONTRIBUTIONS

TR was the PI and worked on study design, project management, data preprocessing, data analysis, and was main responsible for the manuscript; MS worked on the study design and

results interpretation, and on manuscript writing; MC worked on data collection and data preprocessing, and contributed to the manuscript; CS worked on study design, data preprocessing and analysis, and contributed to the manuscript.

REFERENCES

- Ahlfors, S. P., Jones, S. R., Ahveninen, J., Hämäläinen, M. S., Belliveau, J. W., and Bar, M. (2015). Direction of magnetoencephalography sources associated with feedback and feedforward contributions in a visual object recognition task. *Neurosci. Lett.* 585, 149–154. doi: 10.1016/j.neulet.2014.11.029
- Allison, B., Luth, T., Valbuena, D., Teymourian, A., Volosyak, I., Graser, A., et al. (2010). BCI demographics: how many (and what kinds of) people can use an SSVEP BCI? *IEEE Trans. Neural Syst. Rehabil. Eng.* 18, 107–116. doi: 10.1109/TNSRE.2009.2039495
- Ariely, D., and Berns, G. S. (2010). Neuromarketing: the hope and hype of neuroimaging in business. *Nat. Rev. Neurosci.* 11, 284–292. doi: 10.1038/nrn2795
- Aru, J., and Bachmann, T. (2009). Occipital EEG correlates of conscious awareness when subjective target shine-through and effective visual masking are compared: bifocal early increase in gamma power and speed-up of P1. *Brain Res.* 1271, 60–73. doi: 10.1016/j.brainres.2008.12.085
- Badcock, N. A., Mousikou, P., Mahajan, Y., de Lissa, P., Thie, J., and McArthur, G. (2013). Validation of the emotiv EPOC EEG gaming system for measuring research quality auditory ERPs. *PeerJ* 1:e38. doi: 10.7717/peerj.38
- Başar, E., Başar-Eroglu, C., Karakaş, S., and Schürmann, M. (2001). Gamma, alpha, delta, and theta oscillations govern cognitive processes. *Int. J. Psychophysiol.* 39, 241–248. doi: 10.1016/S0167-8760(00)00145-8
- Başar, E., Başar-Eroglu, C., Karakaş, S., and Schürmann, M. (1999). Are cognitive processes manifested in event-related gamma, alpha, theta and delta oscillations in the EEG? *Neurosci. Lett.* 259, 165–168.
- Benedek, M., Bergner, S., Könen, T., Fink, A., and Neubauer, A. C. (2011). EEG alpha synchronization is related to top-down processing in convergent and divergent thinking. *Neuropsychologia* 49, 3505–3511. doi: 10.1016/j.neuropsychologia.2011.09.004
- Berns, G. S., and Moore, S. E. (2012). A neural predictor of cultural popularity. *J. Consum. Psychol.* 22, 154–160. doi: 10.1016/j.jcps.2011.05.001
- Boksem, M. A. S., and Smidts, A. (2015). Brain responses to movie-trailers predict individual preferences for movies and their population-wide commercial success. *J. Market. Res.* 52, 482–492. doi: 10.1509/jmr.13.0572
- Butler, M. J. (2008). Neuromarketing and the perception of knowledge. *J. Consum. Behav.* 7, 415–419. doi: 10.1002/cb.260
- Cabral-Calderin, Y., Schmidt-Samoa, C., and Wilke, M. (2015). Rhythmic gamma stimulation affects bistable perception. *J. Cogn. Neurosci.* 27, 1298–1307. doi: 10.1162/jocn_a_00781
- Camerer, C., Cohen, J., Fehr, E., Glimcher, P., and Laibson, D. (2016). “Neuroeconomics,” in *Handbook of Experimental Economics*, Vol. 2, eds J. Kagel and A. Roth (Princeton, NJ: Princeton University Press), 153–205.
- Camerer, C., Loewenstein, G., and Prelec, D. (2005). Neuroeconomics: how neuroscience can inform economics. *J. Econ. Lit.* 43, 9–64. doi: 10.1257/0022051053737843
- Castelhano, J., Duarte, I. C., Wíral, M., Rodriguez, E., and Castelo-Branco, M. (2014). The dual facet of gamma oscillations: separate visual and decision making circuits as revealed by simultaneous EEG/fMRI. *Hum. Brain Mapp.* 35, 5219–5235. doi: 10.1002/hbm.22545
- Cebolla, A. M., De Saedeleer, C., Bengoetxea, A., Leurs, F., Balestra, C., d’Alcantara, P., et al. (2009). Movement gating of beta/gamma oscillations involved in the N30 somatosensory evoked potential. *Hum. Brain Mapp.* 30, 1568–1579. doi: 10.1002/hbm.20624
- Chand, G. B., Lamichhane, B., and Dhamala, M. (2016). Face or house image perception: beta and gamma bands of oscillations in brain networks carry out decision-making. *Brain Connect.* 6, 621–631. doi: 10.1089/brain.2016.0421
- Chow, G. C. (1960). Tests of equality between sets of coefficients in two linear regressions. *Econometrica* 28, 591–605. doi: 10.2307/1910133
- Christopher, S., Frances, D. B., Skye, M., and Jacqueline, R. (2015). Validating the use of emotiv EPOC in resting EEG coherence research. *Front. Hum. Neurosci.* 9:13. doi: 10.3389/conf.fnhum.2015.219.00013
- Coan, J. A., and Allen, J. J. B. (2003). Frontal EEG asymmetry and the behavioral activation and inhibition systems. *Psychophysiology* 40, 106–114. doi: 10.1111/1469-8986.00011
- Davis, C. E., Hauf, J. D., Wu, D. Q., and Everhart, D. E. (2011). Brain function with complex decision making using electroencephalography. *Int. J. Psychophysiol.* 79, 175–183. doi: 10.1016/j.ijpsycho.2010.10.004
- Debener, S., Minow, F., Emkes, R., Gandras, K., and De Vos, M. (2012). How about taking a low - cost, small, and wireless EEG for a walk? *Psychophysiology* 49, 1617–1621. doi: 10.1111/j.1469-8986.2012.01471.x
- De Pelsmacker, P., Driesen, L., and Rayp, G. (2005). Do consumers care about ethics? Willingness to pay for fair-trade coffee. *J. Consum. Affairs* 39, 363–385. doi: 10.1111/j.1745-6606.2005.00019.x
- Després, O., Lithfous, S., Tromp, D., Pebayle, T., and Dufour, A. (2017). Gamma oscillatory activity is impaired in episodic memory encoding with age. *Neurobiol. Aging* 52, 53–65. doi: 10.1016/j.neurobiolaging.2016.12.019
- Dmochowski, J. P., Bezdek, M. A., Abelson, B. P., Johnson, J. S., Schumacher, E. H., and Parra, L. C. (2014). Audience preferences are predicted by temporal reliability of neural processing. *Nat. Commun.* 5, 1–9. doi: 10.1038/ncomms5567
- Doesburg, S. M., Green, J. J., McDonald, J. J., and Ward, L. M. (2009). Rhythms of consciousness: binocular rivalry reveals large-scale oscillatory network dynamics mediating visual perception. *PLoS ONE* 4:e6142. doi: 10.1371/journal.pone.0006142
- Ehm, W., Bach, M., and Kornmeier, J. (2011). Ambiguous figures and binding: EEG frequency modulations during multistable perception. *Psychophysiology* 48, 547–558. doi: 10.1111/j.1469-8986.2010.01087.x
- Faber, R. J., and O’Guinn, T. C. (1992). A clinical screener for compulsive buying. *J. Consum. Res.* 19, 459–469. doi: 10.1086/209315
- Fisher, C. E., Chin, L., and Klitzman, R. (2010). Defining neuromarketing: practices and professional challenges. *Harv. Rev. Psychiatry* 18, 230–237. doi: 10.3109/10673229.2010.496623
- Garcia, J. R., and Saad, G. (2008). Evolutionary neuromarketing: darwinizing the neuroimaging paradigm for consumer behavior. *J. Consum. Behav.* 7, 397–414. doi: 10.1002/cb.259
- Grummett, T. S., Leibbrandt, R. E., Lewis, T. W., Kline, J. E., Huang, H. J., Snyder, K. L., et al. (2014). Usability of four commercially-oriented EEG systems. *J. Neural Eng.* 11, 1–14. doi: 10.1088/1741-2560/11/4/046018
- Haegens, S., Nacher, V., Hernández, A., Luna, R., Jensen, O., and Romo, R. (2011). Beta oscillations in the monkey sensorimotor network reflect somatosensory decision making. *Proc. Natl. Acad. Sci. U.S.A.* 108, 10708–10713. doi: 10.1073/pnas.1107297108
- Händel, B. F., Haarmeier, T., and Jensen, O. (2011). Alpha oscillations correlate with the successful inhibition of unattended stimuli. *J. Cogn. Neurosci.* 23, 2494–2502. doi: 10.1162/jocn.2010.21557
- Harmon-Jones, E., and Allen, J. J. (1998). Anger and frontal brain activity: EEG asymmetry consistent with approach motivation despite negative affective valence. *J. Pers. Soc. Psychol.* 74, 1310–1316. doi: 10.1037/0022-3514.74.5.1310
- Harmon-Jones, E., Gable, P. A., and Peterson, C. K. (2010). The role of asymmetric frontal cortical activity in emotion-related phenomena: a review and update. *Biol. Psychol.* 84, 451–462. doi: 10.1016/j.biopsycho.2009.08.010
- Heusser, A. C., Poeppel, D., Ezzyat, Y., and Davachi, L. (2016). Episodic sequence memory is supported by a theta-gamma phase code. *Nat. Neurosci.* 19, 1374–1380. doi: 10.1038/nn.4374
- Homburg, C., Koschate, N., and Hoyer, W. D. (2005). Do satisfied customers really pay more? A study of the relationship between customer satisfaction and willingness to pay. *J. Market.* 69, 84–96. doi: 10.1509/jmk.69.2.84.60760

- Hsu, M. (2017). Neuromarketing: inside the mind of the consumer. *Calif. Manage. Rev.* 59, 5–22. doi: 10.1177/0008125617720208
- Jo, H.-G., Hinterberger, T., Wittmann, M., and Schmidt, S. (2016). Rolandic beta-band activity correlates with decision time to move. *Neurosci. Lett.* 616, 119–124. doi: 10.1016/j.neulet.2016.01.051
- Kable, J. W., and Glimcher, P. W. (2009). The neurobiology of decision: consensus and controversy. *Neuron* 63, 733–745. doi: 10.1016/j.neuron.2009.09.003
- Kastanakis, M. N., and Balabanis, G. (2014). Explaining variation in conspicuous luxury consumption: an individual differences' perspective. *J. Bus. Res.* 67, 2147–2154. doi: 10.1016/j.jbusres.2014.04.024
- Kenning, P., and Plassmann, H. (2005). Neuroeconomics: an overview from an economic perspective. *Brain Res. Bull.* 67, 343–354. doi: 10.1016/j.brainresbull.2005.07.006
- Kenward, M. G., and Roger, J. H. (1997). Small sample inference for fixed effects from restricted maximum likelihood. *Biometrics* 53, 983–997. doi: 10.2307/2533558
- Khushaba, R. N., Wise, C., Kodagoda, S., Louviere, J., Kahn, B. E., and Townsend, C. (2013). Consumer neuroscience: assessing the brain response to marketing stimuli using electroencephalogram (EEG) and eye tracking. *Expert Syst. Appl.* 40, 3803–3812. doi: 10.1016/j.eswa.2012.12.095
- Klimesch, W., Freunberger, R., and Sauseng, P. (2010). Oscillatory mechanisms of process binding in memory. *Neurosci. Biobehav. Rev.* 34, 1002–1014. doi: 10.1016/j.neubiorev.2009.10.004
- Lee, N., Brandes, L., Chamberlain, L., and Senior, C. (2017). This is your brain on neuromarketing: reflections on a decade of research. *J. Market. Manage.* 33, 878–892. doi: 10.1080/0267257X.2017.1327249
- Levy, D., and Glimcher, P. W. (2016). "Common value representation—A neuroeconomics perspective," in *Handbook of Value: Perspective from Economics, Neuroscience, Philosophy, Psychology and Sociology*, eds T. Brosch and D. Sander (Oxford, UK: Oxford University Press), 85–118.
- Loureiro, M. L., and Umberger, W. J. (2003). Estimating consumer willingness to pay for country-of-origin labeling. *J. Agric. Resour. Econ.* 28, 287–301.
- Luo, Q., Mitchell, D., Cheng, X., Mondillo, K., McCaffrey, D., Holroyd, T., et al. (2009). Visual awareness, emotion, and gamma band synchronization. *Cereb. Cortex* 19, 1896–1904. doi: 10.1093/cercor/bhn216
- Miller, A., and Tomarken, A. J. (2001). Task-dependent changes in frontal brain asymmetry: Effects of incentive cues, outcome expectancies, and motor responses. *Psychophysiology* 38, 500–511. doi: 10.1111/1469-8986.3830500
- Misra, S. K., Huang, C. L., and Ott, S. L. (1991). Consumer willingness to pay for pesticide-free fresh produce. *Western J. Agric. Econ.* 16, 218–227.
- Moosmann, M., Eichele, T., Nordby, H., Hugdahl, K., and Calhoun, V. D. (2008). Joint independent component analysis for simultaneous EEG–fMRI: principle and simulation. *Int. J. Psychophysiol.* 67, 212–221. doi: 10.1016/j.ijpsycho.2007.05.016
- Murphy, E. R., Illes, J., and Reiner, P. B. (2008). Neuroethics of neuromarketing. *J. Consum. Behav.* 7, 293–302. doi: 10.1002/cb.252
- Nyhus, E., and Curran, T. (2010). Functional role of gamma and theta oscillations in episodic memory. *Neurosci. Biobehav. Rev.* 34, 1023–1035. doi: 10.1016/j.neubiorev.2009.12.014
- Oberman, L. M., Hubbard, E. M., McCleery, J. P., Altschuler, E. L., Ramachandran, V. S., and Pineda, J. A. (2005). EEG evidence for mirror neuron dysfunction in autism spectrum disorders. *Cogn. Brain Res.* 24, 190–198. doi: 10.1016/j.cogbrainres.2005.01.014
- O'Brien, B., and Viramontes, J. L. (1994). Willingness to pay. *Med. Decis. Mak.* 14, 289–297. doi: 10.1177/0272989X9401400311
- Ochner, C. N., Green, D., van Steenburgh, J. J., Kounios, J., and Lowe, M. R. (2009). Asymmetric prefrontal cortex activation in relation to markers of overeating in obese humans. *Appetite* 53, 44–49. doi: 10.1016/j.appet.2009.04.220
- Ohme, R., Reykowska, D., Wiener, D., and Choromanska, A. (2009). Analysis of neurophysiological reactions to advertising stimuli by means of EEG and galvanic skin response measures. *J. Neurosci. Psychol. Econ.* 2, 21–31. doi: 10.1037/a0015462
- Ohme, R., Reykowska, D., Wiener, D., and Choromanska, A. (2010). Application of frontal EEG asymmetry to advertising research. *J. Econ. Psychol.* 31, 785–793. doi: 10.1016/j.joep.2010.03.008
- Olsen, J. A., and Smith, R. D. (2001). Theory versus practice: a review of 'willingness-to-pay' in health and health care. *Health Econ.* 10, 39–52. doi: 10.1002/1099-1050(200101)10:1<39::AID-HEC563>3.0.CO;2-E
- Ozanne, L. K., and Vlosky, R. P. (1997). Willingness to pay for environmentally certified wood products: a consumer perspective. *For. Prod. J.* 47, 39–48.
- Palva, S., and Palva, J. M. (2007). New vistas for α -frequency band oscillations. *Trends Neurosci.* 30, 150–158. doi: 10.1016/j.tins.2007.02.001
- Petrides, M., and Pandya, D. N. (1999). Dorsolateral prefrontal cortex: comparative cytoarchitectonic analysis in the human and the macaque brain and corticocortical connection patterns. *Eur. J. Neurosci.* 11, 1011–1036. doi: 10.1046/j.1460-9568.1999.00518.x
- Pizzagalli, D. A., Sherwood, R. J., Henriques, J. B., and Davidson, R. J. (2005). Frontal brain asymmetry and reward responsiveness: a source-localization study. *Psychol. Sci.* 16, 805–813. doi: 10.1111/j.1467-9280.2005.01618.x
- Plassmann, H., O'Doherty, J. P., and Rangel, A. (2010). Appetitive and aversive goal values are encoded in the medial orbitofrontal cortex at the time of decision making. *J. Neurosci.* 30, 10799–10808. doi: 10.1523/JNEUROSCI.0788-10.2010
- Plassmann, H., O'Doherty, J., and Rangel, A. (2007). Orbitofrontal cortex encodes willingness to pay in everyday economic transactions. *J. Neurosci.* 27, 9984–9988. doi: 10.1523/JNEUROSCI.2131-07.2007
- Plassmann, H., Ramsøy, T. Z., and Milosavljevic, M. (2012). Branding the brain: a critical review and outlook. *J. Consum. Psychol.* 22, 18–36. doi: 10.1016/j.jcps.2011.11.010
- Plassmann, H., Venkatraman, V., Huettel, S., and Yoon, C. (2015). Consumer neuroscience: applications, challenges, and possible solutions. *J. Mark. Res.* 52, 427–435. doi: 10.1509/jmr.14.0048
- Polania, R., Krajbich, I., Grueschow, M., and Ruff, C. C. (2014). Neural oscillations and synchronization differentially support evidence accumulation in perceptual and value-based decision making. *Neuron* 82, 709–720. doi: 10.1016/j.neuron.2014.03.014
- Ramsøy, T. Z. (2015). *Introduction to Neuromarketing & Consumer Neuroscience*. Holbæk: Neurons Inc Publishers.
- Ravaja, N., Somervuori, O., and Salminen, M. (2012). Predicting purchase decision: the role of hemispheric asymmetry over the frontal cortex. *J. Neurosci. Psychol. Econ.* 6, 1–13. doi: 10.1037/a0029949
- Ritter, P., Moosmann, M., and Villringer, A. (2009). Rolandic alpha and beta EEG rhythms' strengths are inversely related to fmri-bold signal in primary somatosensory and motor cortex. *Hum. Brain Mapp.* 30, 1168–1187. doi: 10.1002/hbm.20585
- Roche, R. (2004). EEG alpha power changes reflect response inhibition deficits after traumatic brain injury (TBI) in humans. *Neurosci. Lett.* 362, 1–5. doi: 10.1016/j.neulet.2003.11.064
- Rolls, E. T. (2000). The orbitofrontal cortex and reward. *Cereb. Cortex* 10, 284–294. doi: 10.1093/cercor/10.3.284
- Rolls, E. T. (2004). Convergence of sensory systems in the orbitofrontal cortex in primates and brain design for emotion. *Anat. Rec. A Discov. Mol. Cell. Evol. Biol.* 281, 1212–1225. doi: 10.1002/ar.a.20126
- Rosa, M. J., Kilner, J., Blankenburg, F., Josephs, O., and Penny, W. (2010). Estimating the transfer function from neuronal activity to BOLD using simultaneous EEG–fMRI. *Neuroimage* 49, 1496–1509. doi: 10.1016/j.neuroimage.2009.09.011
- Roux, F., and Uhlhaas, P. J. (2014). Working memory and neural oscillations: alpha–gamma versus theta–gamma codes for distinct WM information? *Trends Cogn. Sci.* 18, 16–25. doi: 10.1016/j.tics.2013.10.010
- Rushworth, M. F., Kolling, N., Sallet, J., and Mars, R. B. (2012). Valuation and decision-making in frontal cortex: one or many serial or parallel systems? *Curr. Opin. Neurobiol.* 22, 946–955. doi: 10.1016/j.conb.2012.04.011
- Rustichini, A. (2005). Neuroeconomics: present and future. *Games Econ. Behav.* 52, 201–212. doi: 10.1016/j.geb.2005.05.004
- Sabate, M., Llanos, C., Enriquez, E., and Rodriguez, M. (2012). Mu rhythm, visual processing and motor control. *Clin. Neurophysiol.* 123, 550–557. doi: 10.1016/j.clinph.2011.07.034
- Sadaghiani, S., Scheeringa, R., Lehongre, K., Morillon, B., Giraud, A. L., and Kleinschmidt, A. (2010). Intrinsic connectivity networks, alpha oscillations, and tonic alertness: a simultaneous electroencephalography/functional magnetic resonance imaging study. *J. Neurosci.* 30, 10243–10250. doi: 10.1523/JNEUROSCI.1004-10.2010
- Sauseng, P., Klimesch, W., Doppelmayr, M., Pecherstorfer, T., Freunberger, R., and Hanslmayr, S. (2005). EEG alpha synchronization and functional coupling during top-down processing in a working memory task. *Hum. Brain Mapp.* 26, 148–155. doi: 10.1002/hbm.20150

- Schadow, J., Dettler, N., Paramei, G. V., Lenz, D., Fründ, I., Sabel, B. A., et al. (2009). Impairments of gestalt perception in the intact hemifield of hemianopic patients are reflected in gamma-band EEG activity. *Neuropsychologia* 47, 556–568. doi: 10.1016/j.neuropsychologia.2008.10.012
- Schneider, T. R., Lorenz, S., Senkowski, D., and Engel, A. K. (2011). Gamma-band activity as a signature for cross-modal priming of auditory object recognition by active haptic exploration. *J. Neurosci.* 31, 2502–2510. doi: 10.1523/JNEUROSCI.6447-09.2011
- Senior, C., and Lee, N. (2008). A manifesto for neuromarketing science. *J. Consum. Behav.* 7, 263–271. doi: 10.1002/cb.250
- Smidts, A., Hsu, M., Sanfey, A. G., Boksem, M. A. S., Ebstein, R. B., Huettel, S. A., et al. (2014). Advancing consumer neuroscience. *Mark. Lett.* 25, 257–267. doi: 10.1007/s11002-014-9306-1
- Smith, E. E., Reznik, S. J., Stewart, J. L., and Allen, J. J. B. (2017). Assessing and conceptualizing frontal EEG asymmetry: an updated primer on recording, processing, analyzing, and interpreting frontal alpha asymmetry. *Int. J. Psychophysiol.* 111, 98–114. doi: 10.1016/j.ijpsycho.2016.11.005
- Spielberg, J. M., Stewart, J. L., Levin, R. L., Miller, G. A., and Heller, W. (2008). Prefrontal cortex, emotion, and approach/withdrawal motivation. *Soc. Pers. Psychol. Compass* 2, 135–153. doi: 10.1111/j.1751-9004.2007.00064.x
- Spironelli, C., and Angrilli, A. (2010). Developmental aspects of language lateralization in delta, theta, alpha and beta EEG bands. *Biol. Psychol.* 85, 258–267. doi: 10.1016/j.biopsycho.2010.07.011
- Steinmann, S., Leicht, G., Ertl, M., Andreou, C., Polomac, N., Westerhausen, R., et al. (2014). Conscious auditory perception related to long-range synchrony of gamma oscillations. *Neuroimage* 100, 435–443. doi: 10.1016/j.neuroimage.2014.06.012
- Tu, Y., Zhang, Z., Tan, A., Peng, W., Hung, Y. S., Moayed, M., et al. (2016). Alpha and gamma oscillation amplitudes synergistically predict the perception of forthcoming nociceptive stimuli. *Hum. Brain Mapp.* 37, 501–514. doi: 10.1002/hbm.23048
- van Diepen, R. M., and Mazaheri, A. (2017). Cross-sensory modulation of alpha oscillatory activity: suppression, idling, and default resource allocation. *Eur. J. Neurosci.* 45, 1431–1438. doi: 10.1111/ejn.13570
- Vlosky, R. P., Ozanne, L. K., and Fontenot, R. J. (1999). A conceptual model of US consumer willingness-to-pay for environmentally certified wood products. *J. Consum. Market.* 16, 122–140. doi: 10.1108/07363769910260498
- Wang, D., Chen, Z., Yang, C., Liu, J., Mo, F., and Zhang, Y. (2015). Validation of the mobile emotiv device using a neuroscan event-related potential system. *J. Med. Imag. Health Inform.* 5, 1553–1557. doi: 10.1166/jmih.2015.1563
- Wang, L., Jensen, O., van den Brink, D., Weder, N., Schoffelen, J. M., Magyari, L., et al. (2012). Beta oscillations relate to the n400m during language comprehension. *Hum. Brain Mapp.* 33, 2898–2912. doi: 10.1002/hbm.21410
- Wang, Y., and Griskevicius, V. (2014). Conspicuous consumption, relationships, and rivals: women's luxury products as signals to other women. *J. Consum. Res.* 40, 834–854. doi: 10.1086/673256
- Weiss, S., and Mueller, H. M. (2012). Too many betas do not spoil the broth": the role of beta brain oscillations in language processing. *Front. Psychol.* 3:201. doi: 10.3389/fpsyg.2012.00201
- Wilhelms, E. A., and Reyna, V. F. (2014). *Neuroeconomics, Judgment, and Decision Making*. New York, NY: Psychology Press.
- Wilson, R., Gaines, J., and Hill, R. P. (2008). Neuromarketing and consumer free will. *J. Consum. Affairs* 42, 389–410. doi: 10.1111/j.1745-6606.2008.00114.x
- Wokke, M. E., Cleeremans, A., and Ridderinkhof, K. R. (2017). Sure i'm sure: prefrontal oscillations support metacognitive monitoring of decision making. *J. Neurosci.* 37, 781–789. doi: 10.1523/JNEUROSCI.1612-16.2016

Conflict of Interest Statement: The authors declare that the research was conducted in the absence of any commercial or financial relationships that could be construed as a potential conflict of interest.

Copyright © 2018 Ramsøy, Skov, Christensen and Stahlhut. This is an open-access article distributed under the terms of the Creative Commons Attribution License (CC BY). The use, distribution or reproduction in other forums is permitted, provided the original author(s) and the copyright owner are credited and that the original publication in this journal is cited, in accordance with accepted academic practice. No use, distribution or reproduction is permitted which does not comply with these terms.