

Application Scenarios for Artificial Intelligence in Nursing Care: Rapid Review

Seibert, Kathrin ; Domhoff, Dominik ; Bruch, Dominik ; Schulte-Althoff, Matthias; Fürstenau, Daniel; Biessmann, Felix ; Wolf-Ostermann, Karin

Document Version
Final published version

Published in:
Journal of Medical Internet Research

DOI:
[10.2196/26522](https://doi.org/10.2196/26522)

Publication date:
2021

License
CC BY

Citation for published version (APA):
Seibert, K., Domhoff, D., Bruch, D., Schulte-Althoff, M., Fürstenau, D., Biessmann, F., & Wolf-Ostermann, K. (2021). Application Scenarios for Artificial Intelligence in Nursing Care: Rapid Review. *Journal of Medical Internet Research*, 23(11), Article e26522. <https://doi.org/10.2196/26522>

[Link to publication in CBS Research Portal](#)

General rights

Copyright and moral rights for the publications made accessible in the public portal are retained by the authors and/or other copyright owners and it is a condition of accessing publications that users recognise and abide by the legal requirements associated with these rights.

Take down policy

If you believe that this document breaches copyright please contact us (research.lib@cbs.dk) providing details, and we will remove access to the work immediately and investigate your claim.

Download date: 04. Jul. 2025



Review

Application Scenarios for Artificial Intelligence in Nursing Care: Rapid Review

Kathrin Seibert¹, BA, RN, MSc; Dominik Domhoff¹, BA, MA, RN; Dominik Bruch², BA, RN, MSc; Matthias Schulte-Althoff³, BA, MA; Daniel Fürstenau^{4,5}, PhD; Felix Biessmann⁶, PhD; Karin Wolf-Ostermann¹, PhD

¹Institute of Public Health and Nursing Research, High Profile Area Health Sciences, University of Bremen, Bremen, Germany

²Auf- und Umbruch im Gesundheitswesen UG, Bonn, Germany

³School of Business and Economics, Department of Information Systems, Freie Universität Berlin, Einstein Center Digital Future, Berlin, Germany

⁴Department of Digitalization, Copenhagen Business School, Frederiksberg, Denmark

⁵Institute of Medical Informatics, Charité - Universitätsmedizin Berlin, Berlin, Germany

⁶Faculty VI - Informatics and Media, Beuth University of Applied Sciences, Einstein Center Digital Future, Berlin, Germany

Corresponding Author:

Kathrin Seibert, BA, RN, MSc
Institute of Public Health and Nursing Research
High Profile Area Health Sciences
University of Bremen
Grazer Str. 4
Bremen, 28359
Germany
Phone: 49 42121868903
Email: kseibert@uni-bremen.de

Abstract

Background: Artificial intelligence (AI) holds the promise of supporting nurses' clinical decision-making in complex care situations or conducting tasks that are remote from direct patient interaction, such as documentation processes. There has been an increase in the research and development of AI applications for nursing care, but there is a persistent lack of an extensive overview covering the evidence base for promising application scenarios.

Objective: This study synthesizes literature on application scenarios for AI in nursing care settings as well as highlights adjacent aspects in the ethical, legal, and social discourse surrounding the application of AI in nursing care.

Methods: Following a rapid review design, PubMed, CINAHL, Association for Computing Machinery Digital Library, Institute of Electrical and Electronics Engineers Xplore, Digital Bibliography & Library Project, and Association for Information Systems Library, as well as the libraries of leading AI conferences, were searched in June 2020. Publications of original quantitative and qualitative research, systematic reviews, discussion papers, and essays on the ethical, legal, and social implications published in English were included. Eligible studies were analyzed on the basis of predetermined selection criteria.

Results: The titles and abstracts of 7016 publications and 704 full texts were screened, and 292 publications were included. Hospitals were the most prominent study setting, followed by independent living at home; fewer application scenarios were identified for nursing homes or home care. Most studies used machine learning algorithms, whereas expert or hybrid systems were entailed in less than every 10th publication. The application context of focusing on image and signal processing with tracking, monitoring, or the classification of activity and health followed by care coordination and communication, as well as fall detection, was the main purpose of AI applications. Few studies have reported the effects of AI applications on clinical or organizational outcomes, lacking particularly in data gathered outside laboratory conditions. In addition to technological requirements, the reporting and inclusion of certain requirements capture more overarching topics, such as data privacy, safety, and technology acceptance. Ethical, legal, and social implications reflect the discourse on technology use in health care but have mostly not been discussed in meaningful and potentially encompassing detail.

Conclusions: The results highlight the potential for the application of AI systems in different nursing care settings. Considering the lack of findings on the effectiveness and application of AI systems in real-world scenarios, future research should reflect on a more nursing care-specific perspective toward objectives, outcomes, and benefits. We identify that, crucially, an advancement

in technological-societal discourse that surrounds the ethical and legal implications of AI applications in nursing care is a necessary next step. Further, we outline the need for greater participation among all of the stakeholders involved.

(*J Med Internet Res* 2021;23(11):e26522) doi: [10.2196/26522](https://doi.org/10.2196/26522)

KEYWORDS

nursing care; artificial intelligence; machine learning; expert system; hybrid system

Introduction

Background

Despite a surge in funded research in the application of digital technologies toward a higher assurance of quality nursing care, in times of aging societies and skill shortages [1], the application of artificial intelligence (AI) in nursing practice is still scarce. In this context, AI can be defined as algorithms that enable learning from data sets to achieve intelligent, goal-oriented action.

Recent systematic and scoping reviews on the application of AI in nursing research (as well as in practice and emerging trends), covering original research published until October 2019, identified papers listed in medical and multidisciplinary databases. These included studies focused on machine learning (ML) methods, such as deep learning [2], or on health technologies that incorporate AI approaches themselves, such as robots or clinical decision support systems [3]. Various application scenarios have been identified, including clinical or organizational outcomes (eg, falls), admission decisions in emergency medicine, high-definition image recognition, as well as socially assistive robots or health care assistant chatbots [2,3]. In addition, recent years have seen an increase in research highlighting possibilities for the future development of AI in nursing care while underscoring the importance of collaborative, interdisciplinary research, and representative, robust data sets [2].

However, as of today, a universally accepted classification of AI subfields relevant to health, which could act as a vantage point for AI in nursing practice, is missing [4]. Prominent AI approaches include ML, expert, and hybrid systems. ML, as a method of data analysis guided by algorithms, identifies patterns in data and learns from them using different approaches [4]. This is utilized in medical diagnostics, for example [5]. Expert systems build on a knowledge base and a rule-based reasoning engine [4], which, in combination, mimic the reasoning of a human expert who would solve a complex problem by applying predefined if-then rules drawing on a specific knowledge base [6]. These systems can be found in tools that support clinical decision-making and case-based reasoning [7,8]. Hybrid systems combine different AI capabilities by integrating ML with expert systems [9-11]. AI applications aimed at determining the meaning of texts, such as clinical notes, can be found in the AI subfield of natural language processing (NLP) [4,12]. AI applications for automated planning and scheduling can be used to improve the efficiency of human procedures [4], such as generating nursing staff rosters or care-related scheduling decisions [13,14]. Applications that target image and signal processing use algorithms that typically include signal feature analysis and data classification to analyze images or data

produced by movement or sound [4]. These can, for example, aim at activity and health monitoring, wound detection, or pressure injury and fall prediction or prevention [15-19].

Opportunities and Challenges for AI in Nursing Care

Turning our attention specifically to nursing care settings, the primary opportunities for applying AI include application scenarios such as decision support in complex care situations [3,18,20,21]. AI also holds great promise for supporting nurses in tasks considered to take place remotely from direct patient interactions [3,21]. High expenditures of nurses' working hours are frequently reported as being used for the documentation of care processes, with some care facilities reporting up to almost a third of daily working hours being expended for documentation processes [3]. This represents one of the many starting points from which to develop AI solutions to consistently improve nursing care processes and support nurses efficiently in their daily tasks. AI applications for the direct support of care-dependent persons and their informal caregivers are another starting point, as studies with AI approaches in different community and home care settings have shown [4-6]. This is of particular need, given that most long-term care recipients in Germany are being cared for in their own homes [22]. Until now, little knowledge on the practical relevance and applicability of AI systems with setting-specific requirements in nursing care, for example, when introduced in care processes involving persons with limited cognitive abilities, exists thus far.

Furthermore, the transformative effect of AI, resulting from its ability to change the intrinsic nature of health care delivery, is accompanied by ethical risks, namely, concerning the validity of evidence, the fairness of outcomes, and the traceability of harm caused by algorithmic activity [23]. Furthermore, although consensus on the potential of health technologies powered by AI to enhance nursing practice has been reported [3], the critical ideological and ethical nature of nursing practice still needs to be considered, and the role of decision-making, enhanced and burdened by an amplified understanding of opportunities granted by AI applications remains uncertain in the context of providing ethical and transparent nursing care [21]. To our knowledge, an extensive overview of the evidence base and status quo of research on AI for application in nursing practice, including evidence from medical and computer science databases, is missing. By identifying promising application scenarios for AI in nursing practice, such an overview contributes to the systematic enhancement of research and development for AI in nursing practice.

Objectives

This rapid review aims to synthesize the evidence base of application scenarios for AI in nursing care settings, namely, ambulatory and stationary (long-term) care, acute hospital care,

and nursing education. We also address prominent adjacent aspects within the ethical, legal, and social discourse concerning AI in nursing care by addressing the following review questions:

1. Which application scenarios for AI systems in nursing practice are reported, considering that different care settings are described in the literature?
2. What kinds of AI approaches have been researched, or are being discussed in the literature, and for which kinds of care settings?
3. What requirements or barriers have been reported for the application of AI in nursing practice?
4. Which ethical, legal, and social aspects—concerning AI and nursing—are discussed in the national and international literature?

Although our approach is broader than those of similar reviews that have focused exclusively on ML algorithms [24], it is also more broadly scoped in that it considers the ethical and regulatory context of the AI system deployed but does not focus exclusively on these aspects as other reviews have done [25].

Methods

Criteria for Considering Publications for This Review

We conducted a rapid review to identify and synthesize publications promptly [26]. A protocol describing the rationale and methods of this review was published in May 2020 [27]. This paper follows the guidelines outlined in the PRISMA (Preferred Reporting Items for Systematic Reviews and Meta-Analyses) Statement [28].

We included all designs of quantitative and qualitative original research, systematic reviews, and discussion papers or essays on ethical, legal, and social aspects that address the application of AI, specifically in:

1. The support of decision or work processes in direct nursing care or,
2. The organization of nursing care processes,
3. The support of knowledge and competencies in nurses' (further) education or,
4. The support of persons in need of care (explicitly referred to as needing care) or,
5. Persons of all ages in need of support in their activities of daily living.

We included publications in the English language from 2005 onward, as we expect publications on AI to become quickly outdated and updated. Publications focusing on improving the functionality of medical diagnostic or therapeutic technologies, without clearly describing nurses as a relevant target group being affected by the application of the AI system or being directly involved in the application process, were excluded.

Types of Participants, Settings, and AI Systems

Publications had to either designate at least 1 of the following groups of persons as main users or as benefactors of an AI application:

1. Nurses or nursing students

2. Care-dependent persons or their informal caregivers (either explicitly referred to as needing care or being referred to as needing, or benefiting from physical, cognitive, or mental support).

Publications using inconclusive terms, such as *the elderly* or *health care professionals*, without further information on target groups of users or benefactors, were also assessed for inclusion.

Care settings encompassed ambulatory and stationary long-term as well as acute outpatient and hospital care (including rehabilitation facilities) and nursing education settings. Studies assessing care in community settings or assessing the populations mentioned above, but in a laboratory setting, were also included.

As there is no conclusive definition of specific AI abilities or subfields that are relevant for health [4] or nursing care as of yet, all types of AI systems or approaches, ranging from clearly stated types (ML, expert system, hybrid system), to any type of approach combining ML and an expert system and algorithms, across to rather vague descriptions, such as *smart system* or *AI in health care*, were deemed as eligible.

Search Methods for Identification of Studies

We searched the following databases in June 2020: PubMed, CINAHL (including Embase), Association for Computing Machinery Digital Library, Institute of Electrical and Electronics Engineers Xplore, Digital Bibliography & Library Project, computer science bibliography, and Association for Information Systems Library. In addition, we searched digital libraries of leading conferences identified through expert consensus within the study team. These conferences were specifically the Association for the Advancement of AI conference, the Association for Computational Linguistics Conference, the Conference on Computer Vision and Pattern Recognition, the International Conference on Machine Learning, the International Joint Conferences on AI Organization, the conference of the Association for Computing Machinery's Special Interest Group on Knowledge Discovery and Data Mining, the Conference on Neural Information Processing Systems, the International Conference on Principles of Knowledge Representation and Reasoning, the Conference on Uncertainty in AI, the International Conference on Autonomous Agents and Multiagent Systems, and the European Conference on AI. The search strategy based on the block-building approach [29], combined terms for *nursing* and *artificial intelligence* and their respective synonyms. If applicable, we searched the titles, abstracts, and all fields of publication. In the first step, single terms for each block were searched. Second, all terms of a single block were combined using the Boolean operator *OR*. We initially deemed publications in German or English to be eligible. As no publications in the German language fulfilled the inclusion criteria, we focused only on the English. Finally, the results from the second step were combined for the 2 blocks using the Boolean operator *AND*. The hits were recorded for each step. To circumvent imprecisions between concepts described in the titles or abstracts, regarding the components of the search strategy, and to identify a large number of potentially eligible publications, we developed a preferably sensitive search strategy. [Multimedia Appendix 1](#) contains the search strategy,

search terms, and the number of hits for all databases and conference libraries.

Data Collection and Analysis

Selection of Publications, Data Management, and Extraction

Two review authors independently screened all the titles and abstracts. Full texts were screened by a single person. Discrepancies were resolved through discussion or by referral to a third review author. Citations identified by the third search step described above were exported to an EndNote library after excluding duplicates. Titles and abstracts were screened using the web-based resource, Rayyan [30]. Full text screening was conducted in EndNote and documented using a spreadsheet program. Data extraction was conducted by a single reviewer and included the following data for all publications:

1. Author, year, country of origin
2. Setting
3. Target group of users or benefactors
4. Methods used or addressed
5. Purpose of the AI application

Furthermore, we extracted information on study design, type of data sets used, number of participants, outcomes assessed, results, and reported requirements or barriers for the application of AI for a subsample of studies that we considered as studies that incorporated real-world settings. For studies focusing on

research of a more basic nature and describing laboratory scenarios or which used pre-existing data sets, either without transfer of results to real-world nursing scenarios or without evaluation of real-world outcomes, or focused on algorithm qualities or proof-of-concept studies, no information on results were extracted.

Assessment of Risk of Bias and Level of Evidence

As the rating of the effectiveness of AI applications in nursing care was not a primary research interest of this review, we did not assess the risk of bias of the results within the original research studies. To map the advancement of research regarding reliability, external validity, and generalization of results, a level of evidence (LOE) was assigned to each publication. We used established evidence-based nursing and evidence-based medicine hierarchies [31,32] and ranked LOEs from level I (highest evidence) to level VII (lowest evidence), as shown in [Textbox 1](#). As we did not assess the risk of bias, the characteristic *well designed* in the LOE description is enclosed in brackets. Studies using a nonrandomized control group design, in which one group of participants did not receive an AI-supported intervention, or where a before-and-after design was implemented, were assigned to level III. Publications providing an overview without using a systematic review design were assigned to level VII. Publications not reporting results obtained by a specific research design were then labeled as *concept only* and were not assigned an LOE.

Textbox 1. Level of evidence rating categories.

Level of evidence	
• Level I	• Evidence from a systematic review or meta-analysis of all relevant randomized controlled trials (RCTs) or evidence-based clinical practice guidelines, based on systematic reviews of RCTs, or of 3 or more RCTs of good quality that have similar results
• Level II	• Evidence obtained from at least 1 (well-designed) RCT
• Level III	• Evidence obtained from (well-designed) controlled trials without randomization (eg, quasi-experimental)
• Level IV	• Evidence from (well-designed) case-control or cohort studies
• Level V	• Evidence from systematic reviews of descriptive and qualitative studies (metasynthesis)
• Level VI	• Evidence from a single descriptive or qualitative study
• Level VII	• Evidence from the opinion of authorities or reports of expert committees
• No applicable level	• Concept only

Analysis and Synthesis

Publications were grouped into basic research studies (category *basic or experimental*) or those incorporating real-world scenarios. The country of origin was coded into a country code, as defined in ISO 3166-1; it refers to the country in which the analyzed data were generated. We classified studies as either directly addressing nurses, care dependents, patients, or informal caregivers as being the main users or benefactors of the AI system. An AI system can solve complex problems that have been previously reserved for humans. This is done by breaking these problems into a number of simple prediction tasks [33]. We coded the types of AI systems and application contexts for each publication on the basis of the categories given in Wahl et al [4], which we expanded after determining the final sample of publications to be included. The category *Type of AI Approach* comprises the codes *machine learning* and *expert system*, as defined above. In addition, we also considered *hybrid systems*, defined as a combination of expert systems with ML [9-11]. Studies using deep learning approaches have been included in ML. AI systems can be defined as self-training structures of ML predictors, which automate and accelerate human tasks, and consist of *domain structure*, *data generation*, and a *general purpose prediction algorithm* [33]; information on the domain structure, which needs to be attributable to the nursing care context, was mandatory for inclusion. Studies lacking information on the data generation, as well as the prediction algorithm dimension, using rather generalized terms, were categorized as not specified in the category *Type of AI Approach*.

The application context category is also derived from Wahl et al [4] and comprises *automated planning and scheduling*, *image and signal processing*, and *NLP*. Both categories also entail codes for unclear and nonspecific information or restricted applicability. Originating from the data extracted for the purpose of the AI application, we inductively developed codes for the *setting* category and 22 codes for the *purpose* category that summarize the domain of health or nursing activity affected by the AI system (eg, nurse rostering and scheduling, tracking or monitoring of activity and health tracking, falls or quality of life, and well-being of caregivers). In addition, we inductively derived 7 codes for a more generalized *application scenario* (support of direct nursing care, support of the care organization,

support of independent living care-dependent people, health of the caretaker, formal and informal education, risk estimation and prevention, etc). Systematic reviews and other types of publications were coded as described above if possible, or rated as not applicable for some categories.

Study characteristics and target groups of users or benefactors are descriptively summarized and displayed in tables and figures. To answer the first and second research questions, we descriptively summarized the categories *purpose*, *application scenario*, *type of AI approach*, and *application context* in relation to the *setting* category. The results will be summarized, as well as differentiated, for studies considered to be of a more basic nature, such as laboratory experiments or proof-of-concept papers (category *basic or experimental*) and real-world scenario studies (category *real-world setting*) and displayed in tables or figures. To answer the third research question, we narratively summarized the requirements and barriers reported in real-world scenario studies, as well as systematic reviews or publications focusing on the ethical, legal, and social implications (ELSIs) of AI in nursing care. The latter also provides the basis for answering the fourth research question in the form of narrative synthesis.

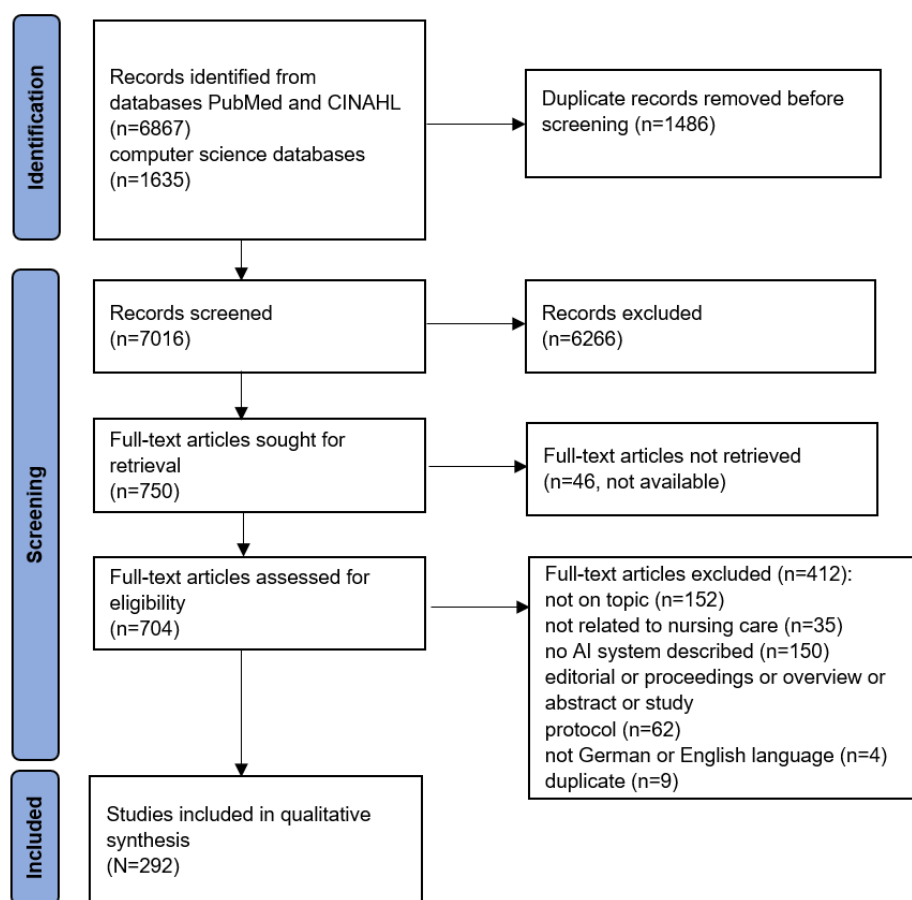
Results

Included Publications

Overview

Searches performed in databases for nursing and health sciences yielded 6867 matches. Databases containing publications from computer science publications added an additional 1635 matches. The handling of the included publications and the numbers of included and excluded records are depicted in Figure 1. In the first step, we eliminated duplicate records (n=1486), resulting in 7016 publications proceeding into the screening of their titles and abstracts, which led to the further exclusion of 6266 publications. For the remaining 704 available publications, the full texts were screened, and a further 412 publications were excluded in this step, leaving 292 publications to be incorporated in this review (Multimedia Appendix 2 [7-13,15-19,21,34-310] describes an overview of all 292 references and the selected characteristics for these included publications).

Figure 1. PRISMA (Preferred Reporting Items for Systematic Reviews and Meta-Analyses) [34] flowchart of the publication screening process and study selection. AI: artificial intelligence.



Characteristics of Included Studies

Publication Date, Country, and Publication Language

Of the 292 studies, 155 (53.1%) were published between 2016 and June 2020, with the remaining 137 (46.9%) originating from 2005 to 2015. The included studies used data generated in 39 countries, which in most cases corresponded with the country affiliation of the first author. The 10 countries with the most publications were the United States (n=72), Japan (n=45), Canada (n=23), China (n=16), Taiwan (n=15), the United Kingdom (n=11), Australia (n=10), India (n=9), Spain (n=9), South Korea (n=8), and Germany (n=8). All studies were published in English.

Research Setting

We classified 83.2% (243/292) of studies as basic or experimental and 11.6% (34/292) as studies in real-world settings. In addition, 8 scoping or systematic reviews, 6 publications on ethical, legal, and social aspects, and 1 survey on AI in nursing practice were included.

Level of Evidence

The LOE assigned most often was level VI (evidence from a single descriptive or qualitative study), which applied to 77.1% (225/292) of studies. An evidence level of III (evidence obtained from well-designed controlled trials without randomization) or higher was assigned to 2.1% (6/292) of studies. Table 1 shows the number of studies assigned to each level of the evidence category.

Table 1. Numbers of publications by level of evidence and research setting (N=292).

Level of evidence	Basic or experimental (n=243), n (%)	Real-world setting (n=34), n (%)	Other (n=15), n (%)	Total (N=292), n (%)
Level I	0 (0)	0 (0)	1 (6.7)	1 (0.3)
Level II	0 (0)	1 (2.9)	0 (0)	1 (0.3)
Level III	0 (0)	4 (11.8)	0 (0)	4 (1.4)
Level IV	7 (2.9)	7 (20.6)	0 (0)	14 (4.8)
Level V	0 (0)	0 (0)	7 (46.7)	7 (2.4)
Level VI	199 (81.9)	21 (61.8)	5 (33.3)	225 (77.1)
Level VII	4 (1.6)	0 (0)	2 (13.3)	6 (2.1)
No applicable level	33 (13.6)	1 (2.9)	0 (0)	34 (11.6)

Beneficiaries and Setting

We found that 46.2% (135/292) of publications specifically addressed care-dependent persons as the target group of the proposed or examined AI solutions, 39.4% (115/292) targeting nurses, and 9.6% (28/292) stating informal caregivers as the target group. Two or more of the aforementioned groups were addressed in 49 studies, and all of them in 6 publications. In addition, 23.3% (68/292) of the publications did not state either of the 3 groups as their primary target group. These studies frequently proposed AI approaches with nurses targeted as potential beneficiaries among other health care professionals.

Hospitals are the most prominent research setting, followed by independent living at home, with nursing homes, ambulatory long-term care, and outpatient health care being less frequently addressed (Table 2). Other settings, including the community, rehabilitation, daycare, and education facilities have been the subject of only a few studies. Multiple settings were the subject of 10.6% (31/292) of the publications, and 11.3% (33/292) did not state any setting. Studies employing a real-world setting also predominantly focused on hospitals. Other settings were only referred to infrequently.

Table 2. Numbers of publications by application and research setting (N=292).

Setting	Basic or experimental (n=243), n (%)	Real-world setting (n=34), n (%)	Other (n=15), n (%)	Total (N=292), n (%)
Hospital	70 (28.8)	13 (38.2)	4 (26.7)	86 (29.8)
Independent living	64 (26.3)	0 (0)	2 (13.3)	66 (22.6)
Nursing home	21 (8.6)	12 (35.3)	0 (0)	32 (11.3)
Ambulatory long-term care	11 (4.1)	6 (17.6)	0 (0)	18 (5.8)
Outpatient health care	10 (4.1)	0 (0)	0 (0)	10 (3.4)
Community	6 (2.5)	1 (2.9)	1 (6.7)	9 (2.7)
Rehabilitation	2 (0.8)	0 (0)	0 (0)	2 (0.7)
Daycare	0 (0)	1 (2.9)	0 (0)	1 (0.3)
Education facility	0 (0)	1 (2.9)	0 (0)	1 (0.3)
Multiple	26 (10.7)	0 (0)	5 (33.3)	31 (10.6)
N/A ^a	3 (1.2)	0 (0)	0 (0)	3 (1)
Not stated	30 (12.3)	0 (0)	3 (20)	33 (11.3)

^aN/A: not applicable.

Type and Subtype of AI Approaches

Considering the type of AI approach, we found the vast majority (228/292, 78.1%) of studies employing ML approaches. Rule-based expert systems were used in 11.6% (34/292) of the publications, whereas hybrid systems were used in only 3 studies. For the remainder of the publications, the specific AI approach used was either not identifiable or this attribute was not applicable, mostly because of publications not employing specific AI approaches in basic or applied research. Studies

incorporating real-world settings made use of ML approaches comparably in 71% (24/34) of cases, whereas expert systems were only covered in 2 studies and hybrid systems not at all (Table 3).

Most AI approaches have been described as solutions for image and signal processing (178/292, 60.9%), that is, the processing of large amounts of signals, such as audio and video data, for feature analysis and data classification [4]. AI approaches have been used for automated planning and scheduling. This category

entails approaches used to organize and prioritize activities and that “can be used to improve the efficiency of human procedures” [4]. Studies have focused less often on the processing of human language (NLP). Image and signal

processing were also performed in most studies conducted in a real-world setting with automated planning and scheduling, and research on NLP has been less frequently reported (Table 4).

Table 3. Numbers of publications by type of artificial intelligence (AI) system and research setting (N=292).

Type of AI system	Basic or experimental (n=243), n (%)	Real-world setting (n=34), n (%)	Other (n=15), n (%)	Total (n=292), n (%)
Machine learning	197 (81.1)	24 (70.6)	7 (46.7)	228 (78.1)
Expert system	29 (11.9)	4 (11.8)	1 (6.7)	34 (11.6)
Not specified	12 (4.9)	6 (17.6)	7 (46.7)	25 (8.6)
Hybrid system	5 (2.1)	0 (0)	0 (0)	5 (1.7)

Table 4. Numbers of publications by subfield of artificial intelligence (AI) and research setting (N=292).

Subfield of AI	Basic or experimental (n=243), n (%)	Real-world setting (n=34), n (%)	Other (n=15), n (%)	Total (N=292), n (%)
Image and signal processing	155 (63.8)	19 (55.9)	4 (26.7)	178 (61)
Automated planning and scheduling	59 (24.3)	14 (41.2)	1 (6.7)	74 (25.3)
Natural language processing	26 (10.7)	1 (2.9)	0 (0)	27 (9.2)
Not specified	3 (1.2)	0 (0)	10 (66.7)	13 (4.5)

Purpose of AI Application

The areas of support for nursing care targeted by the AI approaches are shown in Table 5. With regard to the intended effects from the described AI approaches, 47.6% (139/292) of the studies focused on the support of the direct, immediate process of care. The support of the organization of care services and the support of care-dependent people themselves, as well as risk estimation and prevention, are further prominent purposes. Risk estimation and prevention potentially pose a

cross-sectional topic, where the type of support manifests at multiple levels. The health of the caregiver and education were addressed in only a few cases. For studies in real-world settings, risk estimation or prevention, support of direct care, and support of care organization were each a focus of 29% (10/34) of the studies, whereas the support of care-dependent people and education did not play a prominent role, and no research conducted in a real-world setting focused on the health of caregivers.

Table 5. Numbers of publications by area of support and research setting (N=292).

Area of support	Basic or experimental (n=243), n (%)	Real-world setting (n=34), n (%)	Other (n=15), n (%)	Total (N=292), n (%)
Support of direct care	125 (51.4)	10 (29.4)	4 (26.7)	139 (47.6)
Support of care organization	42 (17.3)	10 (29.4)	0 (0)	52 (17.8)
Risk estimation or prevention	32 (13.2)	10 (29.4)	0 (0)	42 (14.4)
Support of care-dependent people	33 (13.6)	3 (8.8)	3 (20)	39 (13.4)
N/A ^a	5 (2.1)	0 (0)	6 (40)	11 (3.8)
Health of caretaker	4 (1.6)	0 (0)	0 (0)	4 (1.4)
Various	1 (0.4)	0 (0)	2 (13.3)	3 (1)
Education	1 (0.4)	1 (2.9)	0	2 (0.7)

^aN/A: not applicable.

A more detailed summary of the purpose of the AI approaches is presented in Table 6. The most prominent purpose was activity and health tracking (monitoring or classification) in 30.1% (88/292) studies. Care coordination and communication are frequent topics, which, among others, include AI approaches classifying information in nursing documentation, supporting decision-making, and yielding information for coordination and continuity of care. Fall detection, fall prevention, and fall risk

classification are also frequently mentioned purposes for topics in AI. In contrast to falls, other mobility-related aspects were of lesser interest and were mentioned in only a few studies. Further purposes with a high degree of specificity are the recognition, classification, reduction of alarms, and risk prediction and classification of pressure ulcers. Addressing nurse rostering or scheduling problems was the purpose of an AI solution in 4.1% (12/292) studies.

Table 6. Frequencies of stated purposes (monitoring, tracking, classification, prediction, and support) of artificial intelligence solutions (N=292).

Purpose	Frequency, n (%)
Activity and health	88 (30.1)
Care coordination and communication	53 (18.2)
Falls	36 (12.3)
Nursing assessment or care needs assessment	21 (7.2)
Alarms	14 (4.8)
Nurse rostering or scheduling	12 (4.1)
Pressure ulcers	11 (3.8)
Social integration and participation	10 (3.4)
Parenteral or enteral nutrition and fluid intake	7 (2.4)
Quality of life and well-being of caregivers	6 (2.1)
Mobility, other	5 (1.7)
Speech	5 (1.7)
Distribution of medication	3 (1)
Wound management (excluding pressure ulcers)	3 (1)
Bladder control	2 (0.7)
Infection control	2 (0.7)
Respiratory care or weaning	2 (0.7)
Clinical education	1 (0.3)
COPD ^a care	1 (0.3)
Digestion management	1 (0.3)
Pain assessment or management	1 (0.3)
N/A ^b	8 (2.7)

^aCOPD: chronic obstructive pulmonary disease.

^bN/A: not applicable.

Subsample of Studies in Real-world Settings

Overview

We classified 34 publications as studies that employed real-world settings. [Multimedia Appendix 3](#) [13,18,19,34-58,63,69,82,95,100,310,312] summarizes the characteristics of these publications. The data used originated from the United States in 12 studies, from Canada in 5 studies, and from Spain in 3 studies. Australia, Germany, and Japan contributed 2 studies each to the subsample, and the remaining single studies used data from Brazil, Finland, Greece, Hong Kong, Ireland, Italy, and Singapore. A Saudi Arabian survey on health care employees' perceptions of the use of AI applications that involved 121 nurses as participants [34] was also included in the subsample. In the 27 studies that reported on the number of participants, sample sizes ranged from small samples including <10 people [35,36] to large data sets holding information from >200,000 individuals [13,37]. Of the 31 studies reporting more details on participant characteristics, data from patients in hospitals were analyzed in 13 studies, of which 5 focused on pediatric or adult intensive care unit (ICU) patients [13,38-40,312]. Residents of long-term care institutions were included in 12 studies that sometimes also included caregivers

and other health professionals [35,41-44]. People with dementia or cognitive impairment were included in 3 studies [36,42,45]. Home care clients or community-dwelling elderly were included in 6 studies [46-51,313], 3 studies specifically focused on nurses or nursing students [34,52,53], and 1 study targeted elderly people at a daycare facility [54]. The more or less detailed reporting of heterogeneous study designs included experimental designs, field experiments [54], real-life use-cases [55], case studies with a single subject design [36], cross-sectional and longitudinal observational designs as well as comparative designs, and an economic evaluation nested within a cluster-randomized controlled trial [18,45], and different mixed methods designs (such as the studies by Amato et al [35], Ala-Kitula et al [46], and Alwan et al [47]). However, some studies did not state a specific design. In that case, they were classified according to the nature of the reported results (such as observational data).

Reported Effects Referring to Clinical or Organizational Outcomes

Of the studies in the subsample reporting results in varying degrees of detail, 22 studies reported effects in terms of algorithm eligibility or technological functionality. For example,

Chen et al [42] developed a detector for elopement behavior in dementia care units on the basis of a hidden Markov model and concluded that the system may reduce the risk of actual unwitnessed elopement, thus preventing negative consequences of elopement, but did not report on the longitudinal implementation of the detector or changes in elopement rates or nursing work processes. In contrast, no additional benefit by applying AI technology for a use-case aimed at gathering personal health data from home monitoring sensors, activity trackers, national electronic health records, and previous home care reports to evaluate the home care need and its availability in real time was reported by Ala-Kitula et al [46]. Results for outcomes that we considered to be of a more clinical or organizational nature are reported in 12 studies and highlight the real-world effect of the contribution of AI approaches to nursing care. Of those studies, 7 were conducted in long-term care facilities, 3 in the hospital setting, and 1 study in a daycare facility or an educational setting. Outcomes mainly target some form of physical activity, movement, or response but also, among others, length of stay (LOS), mortality, pressure ulcers, and handwashing skills.

Bajo et al [52] tested the ability of a multiagent architecture for geriatric residences to provide efficient working schedules by utilizing ML in a case-based reasoning approach. In a sample of 10 nurses, the time spent on supervision and control tasks as well as the time spent on attending to false alarms was reduced, whereas the time for direct patient care increased during the observation period of 6 months [52]. Another multiagent system to enhance assistance and health care for patients with dementia living in geriatric residences with reasoning and planning mechanisms was introduced by Tapia et al [56]. The application of the system led to a reduction in the average number of minutes spent by nurses on the monitoring of residents from more than 150 daily minutes (before implementation) to approximately 90 daily minutes (after implementation). In addition, the number of nurses working simultaneously before and after the implementation of the system reduced, and unauthorized access to restricted zones of the residence was detected almost twice as often after implementation [56]. Tang et al [43] developed a cloud-based nursing care planning system and applied case-based reasoning and text mining to facilitate decision-making of nurses responsible for admissions in a nursing home. In an observational study lasting 6 months, the efficiency of nursing care plan formulation and the response time in handling new applications increased, whereas the number of revisions of the care plan decreased. The time waiting for supporting documents reduced from 24 hours before the implementation of the system to 6.75 hours after the implementation, and the time spent searching for health care information reduced from 90 to 20 minutes, whereas the adoption of traditional health care services increased, and the residents' complaint rate decreased [43]. Xiong et al [44] examined the use of a scalable AI-enabled camera monitoring system to detect and record falls and notify nurses to perform video review of the incident immediately after each fall of residents with dementia in residential care facilities. Compared with a control group of residents who also experienced falls but were not monitored by the system, relative reductions of emergency medical team visits and emergency department visits

of 75% (emergency medical team visits: $P=.001$) and 80% (emergency department visits: $P=.003$), respectively, were observed. [44]. Cho et al [18] developed a decision support intervention using a Bayesian network model to predict hospital-acquired pressure ulcers and assessed its effectiveness on the prevalence of ulcers and ICU LOS as well as on the user adoption rate and attitudes in a controlled trial. Patients in the intervention group had a decreased risk of developing hospital-acquired pressure ulcers (odds ratio 0.1; $P<.001$) and a shorter ICU LOS (odds ratio 0.67; $P<.001$), whereas nurses expressed favorable attitudes toward using the system [18]. Evans et al [57] developed an expert system to identify early signs of physiological deterioration in hospital patients and conducted a longitudinal evaluation of its impact on ICU transfer rates, medical emergency team calls, and mortality. During the 1-year intervention, ICU transfers and medical emergency team calls increased significantly and mortality decreased significantly when compared with the preintervention year for patients on a medical and oncology floor, whereas no significant increase was found for patients on a non-ICU surgical trauma floor that were younger and had fewer comorbidities than patients on the medical and oncology floor [57]. Yamamoto et al [53] used ML to evaluate handwashing skills in nursing students and reported that, when comparing students 3 months after their last training and beginners in handwashing, handwashing skills were almost identical, indicating the need to update practice handwashing beyond initial training. Viswanathan et al [36] observed residents of a long-term care facility with mild-to-moderate cognitive impairment while using an intelligent wheelchair and reported lower mean frontal collision with objects compared with using the wheelchair without the avoidance module preventing wheelchair motion toward nearby obstacles being activated while observing large differences in the users' collision avoidance ability. Zampieri et al [38] used ML to assess whether ICU staffing features are associated with improved hospital mortality, ICU LOS, and duration of mechanical ventilation and identified 3 clusters with, for example, the extent of nurse autonomy as a distinguishing feature and the cluster with the highest nurse autonomy exhibited the best outcomes, with lower adjusted hospital mortality and shorter ICU LOS for patients surviving to ICU discharge and shorter durations of mechanical ventilation. For studies including robotic systems, Mervin et al [45] found marginally greater values in terms of incremental cost per Cohen-Mansfield Agitation Inventory Short Form point averted from a provider's perspective for a plush-toy alternative than an emotional robot seal, but deemed the robot seal a cost-effective psychosocial treatment option for reducing agitation in people with dementia in long-term care as well, as costs are much lower than those estimated for psychosocial group activities and sensory interventions. Matsuyama et al [54] introduced a communication robot to activate and improve group communication and observed an increase in participation in terms of the frequency of smiles and answers in response to the robot system. Carros et al [41] explored, among other outcomes, stakeholders' attitudes, social and organizational practices, and expectations of the Pepper robot in individual and group-based performances and revealed the potential for humanoid robots working in

nursing homes, as well as the necessity of a person in control of the robot acting as a moderator.

Requirements and Barriers

Requirements or challenges and barriers for the application of AI in nursing care outside of technological infrastructure or reliability, precision, and validation of data have been reported in 6 studies, including real-world scenarios [18,35,37,41,58,314] and 4 reviews [59–62]. Requirements included compliance with the EU General Data Protection Regulation and preferences of target users concerning usability and complexity, and also requirements stemming from implementation in specific care settings [35,60]. Furthermore, providers need to concern themselves with their capacity, ability, and willingness to generate data inputs required to achieve high accuracy, in contrast to the clinical burden of false positive or negative results [58]. In addition, the quality of administrative databases should not be affected by AI implementation in the care context [58]. Inclusion of caregivers, user engagement, and commitment to further the participation of older adults in the development and testing of AI systems as well as successful implementation are required [18,41]. Reported challenges and barriers target accuracy of recognition, integration with sensor networks, privacy, security, human–machine interaction, and cognition impairment of users, acceptance, and costs [59,61]. The physical appearance and programmed behavior of hardware hosting AI systems when presented in a humanoid form may seem confusing, unpredictable, or frightening and limit the interpretability of the system's action for nursing home residents [41]. In addition, the appearance of sensors when they are nondisposable and bulky may pose a burden to caregivers [63]. Underreporting of relevant events and scarce public availability of databases holding sufficient data and information to compare one's results, as well as limitations to data sets due to regional data protection laws, constitute barriers to the accuracy of algorithms and the external validity of results [37,62].

Ethical, Legal, and Social Aspects

We identified 6 publications [7,21,64–67], specifically focusing on the ethical, legal, and social aspects of AI in nursing care. In addition, 7 publications [35,41,57,59,60,68,69], which were either reviews or studies including real-world settings, addressed selected ELSI aspects when discussing results or limitations of their work. Recurring aspects were *consent* (of care dependents or nurses), *data privacy and safety*, *acceptance* and *implications for work processes and workforce*, such as lack of human interaction and communication skills or the fear of replacement of nurses by technology and the implications arising from choosing humanoid designs for hardware hosting intelligent technologies [41,67]. Peirce et al [21] focused on relevant ethical, legal, and social aspects of nursing as a profession and highlighted implications arising from the type of data used, such as possible sampling bias, correlational false positives, and hidden discrimination, as well as the values and interests of companies building huge data sets that should be kept in mind. They pointed out the importance of nurses' understanding of the underlying motivations and goals for creating algorithms as well as the learning mechanisms and potential to mediate, as AI-generated knowledge should not be regarded as universally

valid and the potential of algorithms to limit nursing actions and cause the loss of human dignity should be regarded of utmost importance within the discourse on AI in nursing [21].

Discussion

Principal Findings

The results of this rapid review explicate the application scenarios for AI systems in nursing care. Hospitals, followed by independent living at home, were the most frequently investigated settings, whereas nursing homes and ambulatory long-term care were less often examined. The vast majority of studies applied ML, whereas expert and hybrid systems were used only in about every 10th publication. This implies that the current instance of AI is mainly ML driven. For instance, Taddy [33] described the evolution of ML toward status as a general purpose technology and, consequently, as the main driver of the current rise in AI. More than half of the publications focused on image and signal processing and one-third on automated planning and scheduling, whereas NLP appeared in less than 1 in 10 publications.

In the context of direct nursing care, AI is used to organize care processes and support care-dependent people or family caregivers through tracking, monitoring, or classifying activities and health data. This was followed by applications to support care coordination or communication, as well as nurse rostering and scheduling. Detecting, classifying, and preventing falls, as well as recognizing, classifying, and reducing alarms, and predicting and classifying pressure ulcers were further purposes of introducing AI to nursing care. Only a few publications went beyond proof-of-concept studies or laboratory experiments and applied AI in real-world scenarios. Few studies have assessed the effects of AI on clinical and organizational outcomes. In addition to technical or computational requirements, further requirements concerning the specific context of nursing care are scarce and mainly tackle overarching topics, such as data privacy, safety, and acceptance. The same holds for ELSIs, which, for instance, have not been reflected or discussed in most studies using real-world scenarios.

Most studies describe AI applications in hospital settings, particularly ICUs. This may be attributed to the availability of such data. Besides electronic medical, nursing, or health record data, real-time sensor data on vital parameters are more frequently available from ICUs than from regular wards, facilitating a multidimensional approach, which is, for instance, being used to classify risks or identify care needs. This finding is in line with a previously reported increase in the publication rate of studies using ML to analyze routinely collected ICU data [70]. The availability, quality, and quantity of data might also be limited due to differences in digitalization activities in specific care settings, as well as the sufficient inclusion of study participants and duration observation periods to generate large data sets from sensor data. Furthermore, the heterogeneity of different data sets complicates the use of data for AI development.

Considering the development of digital technologies in general, nurses themselves have reported that they feel that regular

hospital wards or long-term care settings are being considered too little [315], which is consistent with our results. It should be noted that some of the included application scenarios cannot be attributed unambiguously to the nursing domain. Although an impact on nurses and patient care is evident when trying to reduce false alarm rates in monitoring [71,316] or to improve mechanical ventilation and sedative dosing processes [72], there is a blurred line between AI systems to support medical diagnostics and therapy, and AI systems to support nursing care. Considering the variety of applications for tracking, monitoring, and classifying health and activity, nurse rostering and scheduling, or detecting falls or fall risks, it is remarkable that so few studies went beyond testing the efficacy of AI approaches. This points to a gap in the existing evidence regarding the effectiveness of AI in real-world scenarios. This is also reflected in the results of the LOE ranking, with only a few studies using designs that could test effects on real-world nursing or on patient outcomes.

In addition, the explicit operationalization of nursing tasks or care processes, and desired clinical, psychosocial, or organizational outcomes, has not been addressed in most of the included studies. On the one hand, this might point to undiscovered possibilities for AI support in nursing care. On the other hand, it might limit the perceived benefit of AI in nursing care and, subsequently, the participation of providers, nurses, care dependents, and family caregivers in developing (as well as sustainably integrating) AI in care processes and everyday activities. Integration of AI in nursing care might also be limited by the lack of a sound description of outcomes, benefits, or values, which will influence the adoption or nonadoption of technologies in nursing care [315,317]. Our review points to a gap in published research on possible application scenarios for AI in nursing care on the one hand, and on the availability of evaluation results regarding already implemented AI systems on the other. This raises the presumption that such evaluations have so far been of less interest. This is particularly troublesome because some studies suggest little or no extra benefit of using AI when compared with alternative or existing solutions [45]. Concerning nurses' need for technologies providing enhanced technological support of direct nursing care tasks to reduce physical burdens and mental stressors [315], there seems to be room for research on AI-sensitive outcomes in nursing care.

Concerning the requirements and barriers for AI in nursing care, we expected to find topics such as data quality and access, as well as factors associated with measuring primary data and obtaining and sharing routine data, more frequently reflected in the included publications. However, only a few studies have addressed these concerns. Most requirements and barriers mirrored topics that are not only relevant for AI systems, but also for digital technologies in nursing and health care in general, such as data privacy, safety, and user acceptance [318]. On the one hand, this could indicate that there are few nursing-specific requirements or barriers to consider. However, this seems unlikely given the heterogeneous origins of the included studies, which have been conducted in different societal and health systems, including, for instance, different regulations on data protection or storage. In contrast, the lack of data and

access-related factors could be attributed to the fact that the descriptive or conceptual nature of most studies led to authors addressing requirements or barriers less frequently.

The ELSIs discussed in the included publications addressed prominent topics in the discourse on the use of technology in health care, such as data privacy and protection, consent, acceptance, and implications for communication [20,25]. These aspects were not addressed in most studies in the subsample of studies, including real-world settings. Only one publication focused specifically on the ethical implications arising from the knowledge generated by AI systems in the context of nursing care. Other ethical principles incorporated in existing AI guidelines, such as trust, sustainability, justice, and fairness [25], are covered superficially if at all. Even though the limited uptake of ELSI aspects in published research might be biased by the fact that the remaining publications were not screened for ELSI aspects, there seems to be room for researchers to incorporate the discussion of ELSI aspects in their work, contributing to building trustworthy and trusted AI solutions [319]. Furthermore, publications describing stakeholder processes, surveys, interviews, or focus groups involving care dependents or nurses and accessing their perspective on AI, were underrepresented in our sample. This indicates that there is room for implementing and facilitating the concept of participatory development and testing, which contribute to the demand orientation and acceptance of AI systems.

Strengths and Limitations

A major strength of this review is the sensitive design of the search strategy, which led to the inclusion of a large sample of study designs and publication types, giving an extensive overview of published works on applications of AI systems in nursing care, as well as considering publications from medical- and informatics-databases and conference archives, which to our knowledge is the first of its kind.

The decision to focus on published works limits the results, as our strategy did not include AI systems already in use for which scientific empirical evidence has not been published and which might be directly introduced to clinical practice by developers. Another notable limitation is our decision to use a rather broad definition of nursing care, care recipients, and care settings, which also included independent living of elderly people. As some of the included publications did not define nursing care as the primary application context, and often included nurses or nursing care facilities as possible users among others, publications dealing with borderline examples of AI application scenarios that might or might not be attributed to the domain of nursing depending on the originating context of the publication, such as medical diagnostics, were not included.

As we used the criterion of conducting field experiments or using real-world data to group studies into basic, experimental, or real-world scenarios, studies in the basic or experimental subsample tested applications that may be considered extending well beyond basic research topics when using other criteria to classify studies. We chose this classification primarily to show the extent of the AI solutions applied in real-world practice. It also needs to be noted that we chose, primarily, absolute and relative numbers of studies and categories to map the existing

literature; however, this provides an overview of prominent research topics and points to gaps in the existing literature; however, this does not allow for an assessment of the sophistication of research on AI approaches done in the context of nursing care. Although an assessment of scientific impact, quality of content, originality, and clarity, as it had been done in the field of sensors, signals, and imaging informatics to identify research works that exemplify recent developments [320] was not part of this review, a number of papers have demonstrated useful techniques to improve the generalizability, interpretability, and reproducibility of increasingly sophisticated models. As we only included publications in English, language bias must be noted. The same holds for the decision to limit the publication range to 2005, and to the selection of the searched databases and conferences, which restrict the sensitivity of the search strategy. However, the increase in publications during the last 5 years indicates that our search managed to cover a relevant period of research and development in AI for nursing care.

Comparison With Previous Work

To our knowledge, this is the first review of its kind to systematize a broad literature base on AI in nursing care, and previous relevant work on this topic is scarce. A direct comparison with the application of AI approaches in other related domains, such as medicine or global health, is difficult, owing to, among other things, reported heterogeneity in AI reporting and the lack of a standardized benchmark [321], which was also present in our sample of studies. Even though disciplines such as biomedicine seem to be more active than nursing in terms of publications targeting AI applications [322], overlapping areas and specific aspects to study such as ethical aspects as well as the impact of digital health interventions and the changes and requirements for the professional role can be noted, for example, in the medicine domain [323]. In relation to the nursing domain, Kikuchi [2] reviewed studies on AI technologies in nursing research that focused on clinical outcomes, such as fall prediction, surgery-related injury, nausea, depression, and survival of patients, as well as on managerial themes addressing bed allocation, decision support, communication risks, nurse burnout, nurses' intention to quit, nursing diagnostics, and knowledge acquisition for nurses. Without including publications outside of medical databases, similar to most studies included in our review, the results indicate a focus on the performance capability of AI algorithms compared with standard statistical methods, underlining the assumption of a lack of evaluation studies on existing AI solutions. Buchanan et al [3] conducted a scoping review on emerging trends in AI-powered health technologies and their implications for domains of nursing, such as administration, clinical practice, policy, and research. In contrast to our current review, specific types of AI approaches were not reported. The described emerging trends are parallel to the application scenarios in this review and entail predictive analytics, clinical decision support systems, smart homes, and health care assistant chatbots, but lay a focus on robot applications [3], which were only sparsely included in this review, as most studies on robots included in the screening process did not meet the inclusion criteria for full text review. The potential of AI to enhance

nursing practice, as well as the need for nurses to take on the shared responsibility to influence and take part in the way AI is integrated into the health system, are highlighted by the results [3], contributing to the importance of engaging in the discussion from the perspective of clinical practice and nursing science. Congruent with Shillan et al [70], who reviewed the use of ML approaches in the ICU context, a lack of methodological reporting guidelines for AI approaches using health care data or being conducted in a health care or nursing setting impedes the identification of relevant studies, as well as with the evaluation and rating of real-world relevance, confidence in reported findings, and translation into clinical practice.

Conclusions

Implications for Practice

The aim of this paper was, first, to describe which application scenarios for AI systems in nursing practice were considered in the existing literature. Second, we aimed to show the kinds of AI approaches that have been researched, or are being discussed in the literature and the kinds of care settings involved. Third, we investigated the requirements for the application of AI in nursing practice. Finally, we investigated the ethical, legal, and social aspects of AI and nursing, which are being discussed in the national and international literature.

The results show a broad spectrum of possible application scenarios and facilitate the participation and piloting of existing AI solutions. Because empirical evidence generated in real-world settings is limited, more knowledge on the benefits and advantages of AI approaches, compared with alternative solutions or usual care, is of great need. To date, little is known about the perspectives and experiences of nurses, care dependents, and informal caregivers, who should seek to take an active role in the scientific and societal discourse on AI in nursing care. By educating themselves on the potential harms and benefits of AI applications, they can empower themselves to influence how AI systems will be integrated into their daily lives and practices. Care facilities can contribute to AI development and research by promoting digitalization and ensuring data quality and availability, as successful research and application of AI depends on access, quality, and quantity of data.

Implications for Research

Our results provide an overview of application scenarios for which empirical evidence on algorithm accuracy has been published within the last 15 years. Considering the lack of findings on the effectiveness and application of AI approaches in real-world scenarios, future research should reflect on a more nursing care-specific perspective in their objectives, outcomes, and potential benefits. Aside from clinical, organizational, and managerial outcomes, which can be operationalized from care facility perspectives, our results provide new insights for research activities. Furthermore, discourse on the ethical, legal, and societal implications of AI applications in nursing care, as well as on the participation of stakeholders, needs to be advanced.

Implications for Policy Makers

Half of the publications in our sample have been published during the last 4 years, indicating an increase in research and funding, specifically concerning the application of AI systems in nursing care, with a large uptick of published experimental research. Policy makers and funding bodies might want to reflect on particular priorities for their future grants and programs, against the background of limited empirical evidence of effectiveness and longitudinal evaluation of AI systems.

Advanced dissemination of nursing practice with AI technologies also calls for modified qualification, education, and informing of nurses, care dependents, and caregivers. Basic knowledge of AI abilities, opportunities, and limitations, as well as limitations concerning data and AI-generated predictions, could become the subject matter for basic nursing education, as well as practice guidelines and information campaigns to enable nurses to take on a mediating role when implementing AI systems in nursing practice.

Acknowledgments

KWO, DF, and FB conceived the superordinate research project and applied for funding. KS and DD conceptualized this rapid review and performed searches, screening, data extraction, coding, and analyses. KS acted as a second coder for the type of artificial intelligence (AI) system and the application context, as well as wrote the initial manuscript. DB performed data extraction, was the first coder for the type of AI approach and application context, and contributed greatly to the results section of the initial manuscript. DD was the second coder for the type of AI approach and application context. DF, FB, and MSA supervised the development of the search strategy and coding criteria. MSA and FB were the third coders for the type of AI approach and application context in case of disagreement between the first and second coders. All authors commented on and approved the final manuscript. This rapid review is part of the research project “Exploratory project on AI in Nursing” and is funded by the German Ministry for Education and Research (grant #16SV8508).

Conflicts of Interest

None declared.

Multimedia Appendix 1

Search strategy.

[\[DOCX File , 33 KB-Multimedia Appendix 1\]](#)

Multimedia Appendix 2

Overview of included studies.

[\[DOCX File , 328 KB-Multimedia Appendix 2\]](#)

Multimedia Appendix 3

Overview of studies with applications in real-world settings.

[\[DOCX File , 77 KB-Multimedia Appendix 3\]](#)

References

1. Krick T, Huter K, Domhoff D, Schmidt A, Rothgang H, Wolf-Ostermann K. Digital technology and nursing care: a scoping review on acceptance, effectiveness and efficiency studies of informal and formal care technologies. *BMC Health Serv Res* 2019 Jun 20;19(1):400 [FREE Full text] [doi: [10.1186/s12913-019-4238-3](#)] [Medline: [31221133](#)]
2. Kikuchi R. Application of artificial intelligence technology in nursing studies: a systematic review. *Online Journal of Nursing Informatics*. 2020. URL: <https://www.himss.org/resources/application-artificial-intelligence-technology-nursing-studies-systematic-review> [accessed 2021-11-17]
3. Buchanan C, Howitt ML, Wilson R, Booth RG, Risling T, Bamford M. Predicted influences of artificial intelligence on the domains of nursing: scoping review. *JMIR Nurs* 2020 Dec 17;3(1):e23939 [FREE Full text] [doi: [10.2196/23939](#)] [Medline: [34406963](#)]
4. Wahl B, Cossy-Gantner A, Germann S, Schwalbe NR. Artificial intelligence (AI) and global health: how can AI contribute to health in resource-poor settings? *BMJ Glob Health* 2018 Aug 29;3(4):e000798. [doi: [10.1136/bmjgh-2018-000798](#)] [Medline: [30233828](#)]
5. Jain V, Chatterjee JM. *Machine Learning with Health Care Perspective*. Cham: Springer; 2020:1-415.
6. Grosan C, Abraham A. Rule-based expert systems. In: *Intelligent Systems Intelligent Systems Reference Library*. Berlin, Heidelberg: Springer; 2011:149-185.
7. Frize M, Yang L, Walker R, O'Connor A. Conceptual framework of knowledge management for ethical decision-making support in neonatal intensive care. *IEEE Trans Inf Technol Biomed* 2005 Jun;9(2):205-215. [doi: [10.1109/titb.2005.847187](#)] [Medline: [16138537](#)]

8. Vairaktarakis C, Tsiamis V, Soursoy G, Lekkas F, Nikolopoulou M, Vasileiadou E, et al. A computer-aided diagnosis system for geriatrics assessment and frailty evaluation. In: Vlamos P, Alexiou A, editors. GeNeDis 2014. CHA: Springer; 2015:69-77.
9. Lu D, Street WN, Delaney C. Knowledge discovery: detecting elderly patients with impaired mobility. *Stud Health Technol Inform* 2006;122:121-123. [Medline: [17102231](#)]
10. Zhou F, Jiao JR, Chen S, Zhang D. A case-driven ambient intelligence system for elderly in-home assistance applications. *IEEE Trans Syst Man Cybern* 2011 Mar;41(2):179-189. [doi: [10.1109/tsmcc.2010.2052456](#)]
11. Tseng KC, Hsu C, Chuang Y. Designing an intelligent health monitoring system and exploring user acceptance for the elderly. *J Med Syst* 2013 Dec;37(6):9967. [doi: [10.1007/s10916-013-9967-y](#)] [Medline: [24037138](#)]
12. Fodeh SJ, Finch D, Bouayad L, Luther SL, Ling H, Kerns RD, et al. Classifying clinical notes with pain assessment using machine learning. *Med Biol Eng Comput* 2018 Jul 26;56(7):1285-1292 [FREE Full text] [doi: [10.1007/s11517-017-1772-1](#)] [Medline: [29280092](#)]
13. Tawfik DS, Profit J, Lake ET, Liu JB, Sanders LM, Phibbs CS. Development and use of an adjusted nurse staffing metric in the neonatal intensive care unit. *Health Serv Res* 2020 Apr 23;55(2):190-200 [FREE Full text] [doi: [10.1111/1475-6773.13249](#)] [Medline: [31869865](#)]
14. Cheng M, Kanai-Pak M, Kuwahara N, Ozaku H, Kogure K, Ota J. Dynamic scheduling based inpatient nursing support: applicability evaluation by laboratory experiments. In: Proceedings of the 3rd ACM International Workshop on Context-Awareness for Self-Managing Systems.: Association for Computing Machinery. 2009; 2009 Presented at: CASEMANS '09: The 3rd ACM International Workshop on Context-Awareness for Self-Managing Systems; 11 May 2009; Nara Japan p. 48-54. [doi: [10.1145/1538864.1538873](#)]
15. Demmer J, Kitzig A, Naroska E. Improvements of a retrospective analysis method for a HMM based posture recognition system in a functionalized nursing bed. In: Proceedings of the IEEE/SICE International Symposium on System Integration (SII). 2017 Presented at: IEEE/SICE International Symposium on System Integration (SII); Dec. 11-14, 2017; Taipei, Taiwan. [doi: [10.1109/SII.2017.8279268](#)]
16. Gerka A, Pflingsthorst M, Lupkes C, Sparenberg K, Frenken M, Lins C, et al. Detecting the number of persons in the bed area to enhance the safety of artificially ventilated persons. In: Proceedings of the IEEE 20th International Conference on e-Health Networking, Applications and Services (Healthcom). 2018 Presented at: IEEE 20th International Conference on e-Health Networking, Applications and Services (Healthcom); Sept. 17-20, 2018; Ostrava, Czech Republic. [doi: [10.1109/healthcom.2018.8531174](#)]
17. Chen Y, Hsu J, Hung C, Wu J, Lai F, Kuo S. Surgical wounds assessment system for self-care. *IEEE Trans Syst Man Cybern Syst* 2020 Dec;50(12):5076-5091. [doi: [10.1109/tsmc.2018.2856405](#)]
18. Cho I, Park I, Kim E, Lee E, Bates DW. Using EHR data to predict hospital-acquired pressure ulcers: a prospective study of a Bayesian Network model. *Int J Med Inform* 2013 Nov;82(11):1059-1067. [doi: [10.1016/j.ijmedinf.2013.06.012](#)] [Medline: [23891086](#)]
19. Marscholke M, Wolf K, Gietzelt M, Nemitz G, Schwabedissen H, Haux R. Assessing elderly persons' fall risk using spectral analysis on accelerometric data--a clinical evaluation study. *Annu Int Conf IEEE Eng Med Biol Soc* 2008;2008:3682-3685. [doi: [10.1109/IEMBS.2008.4650008](#)] [Medline: [19163511](#)]
20. Lynn LA. Artificial intelligence systems for complex decision-making in acute care medicine: a review. *Patient Saf Surg* 2019;13:6 [FREE Full text] [doi: [10.1186/s13037-019-0188-2](#)] [Medline: [30733829](#)]
21. Peirce AG, Elie S, George A, Gold M, O'Hara K, Rose-Facey W. Knowledge development, technology and questions of nursing ethics. *Nurs Ethics* 2020 Feb 28;27(1):77-87. [doi: [10.1177/0969733019840752](#)] [Medline: [31032700](#)]
22. Pflegestatistik - Pflege im Rahmen der Pflegeversicherung - Deutschlandergebnisse - 2017. Destatis. 2018. URL: https://www.destatis.de/DE/Themen/Gesellschaft-Umwelt/Gesundheit/Pflege/Publicationen/Downloads-Pflege/pflege-deutschlandergebnisse-5224001179004.pdf?__blob=publicationFile, [accessed 2021-11-18]
23. Morley J, Floridi L. An ethically mindful approach to AI for health care. *Lancet* 2020 Jan 25;395(10220):254-255. [doi: [10.1016/S0140-6736\(19\)32975-7](#)] [Medline: [31982053](#)]
24. Jordan MI, Mitchell TM. Machine learning: trends, perspectives, and prospects. *Science* 2015 Jul 17;349(6245):255-260. [doi: [10.1126/science.aaa8415](#)] [Medline: [26185243](#)]
25. Jobin A, Ienca M, Vayena E. The global landscape of AI ethics guidelines. *Nat Mach Intell* 2019 Sep 02;1(9):389-399. [doi: [10.1038/s42256-019-0088-2](#)]
26. Tricco AC, Antony J, Zarin W, Striffler L, Ghassemi M, Ivory J, et al. A scoping review of rapid review methods. *BMC Med* 2015 Sep 16;13:224 [FREE Full text] [doi: [10.1186/s12916-015-0465-6](#)] [Medline: [26377409](#)]
27. Seibert K, Domhoff D, Biessmann F, Fürstenau D, Wolf-Ostermann K. A Rapid Review on Application Scenarios for Artificial Intelligence in Nursing Care — Review Protocol. Staats- und Universitätsbibliotheken Bremen. 2020. URL: <https://media.suub.uni-bremen.de/handle/elib/4295>
28. Moher D, Liberati A, Tetzlaff J, Altman DG. Preferred reporting items for systematic reviews and meta-analyses: the PRISMA statement. *PLoS Med* 2009 Jul 21;6(7):e1000097 [FREE Full text] [doi: [10.1371/journal.pmed.1000097](#)] [Medline: [19621072](#)]

29. Boren SA, Moxley D. Systematically reviewing the literature: building the evidence for health care quality. *Mo Med* 2015;112(1):58-62 [FREE Full text] [Medline: 25812277]
30. Ouzzani M, Hammady H, Fedorowicz Z, Elmagarmid A. Rayyan-a web and mobile app for systematic reviews. *Syst Rev* 2016 Dec 05;5(1):210 [FREE Full text] [doi: 10.1186/s13643-016-0384-4] [Medline: 27919275]
31. Ackley B, Swan B, Ladwig G, Tucker S. Evidence-Based Nursing Care Guidelines: Medical-surgical Interventions. St Louis, MO: Mosby Elsevier; 2008.
32. Concato J. Observational versus experimental studies: what's the evidence for a hierarchy? *NeuroRx* 2004 Jul;1(3):341-347 [FREE Full text] [doi: 10.1602/neurorx.1.3.341] [Medline: 15717036]
33. Taddy M. The technological elements of artificial intelligence. NBER Working Paper. 2018. URL: https://www.nber.org/system/files/working_papers/w24301/w24301.pdf [accessed 2021-11-18]
34. Abdullah R, Fakieh B. Health care employees' perceptions of the use of artificial intelligence applications: survey study. *J Med Internet Res* 2020 May 14;22(5):e17620 [FREE Full text] [doi: 10.2196/17620] [Medline: 32406857]
35. Amato F, Bianchi S, Comai S, Crovari P, Pasquarelli M, Imtiaz A, et al. CLONE: a promising system for the remote monitoring of Alzheimer's patients: an experimentation with a wearable device in a village for Alzheimer's care. In: Proceedings of the 4th EAI International Conference on Smart Objects and Technologies for Social Good.: Association for Computing Machinery; 2018 Presented at: Goodtechs '18: International Conference on Smart Objects and Technologies for Social Good; November 28 - 30, 2018; Bologna Italy p. 255-260. [doi: 10.1145/3284869.3284906]
36. Viswanathan P, Little JJ, Mackworth A, Mihailidis A. An intelligent powered wheelchair for users with dementia: case studies with NOAH (navigation and obstacle avoidance help). Association for the Advancement of Artificial Intelligence 2012:1-6 [FREE Full text]
37. Ye C, Li J, Hao S, Liu M, Jin H, Zheng L, et al. Identification of elders at higher risk for fall with statewide electronic health records and a machine learning algorithm. *Int J Med Inform* 2020 May;137:104105 [FREE Full text] [doi: 10.1016/j.ijmedinf.2020.104105] [Medline: 32193089]
38. Zampieri FG, Salluh JJ, Azevedo LC, Kahn JM, Damiani LP, Borges LP, ORCHESTRA Study Investigators. ICU staffing feature phenotypes and their relationship with patients' outcomes: an unsupervised machine learning analysis. *Intensive Care Med* 2019 Nov 08;45(11):1599-1607. [doi: 10.1007/s00134-019-05790-z] [Medline: 31595349]
39. Zhang Y. Real-time development of patient-specific alarm algorithms for critical care. *Annu Int Conf IEEE Eng Med Biol Soc* 2007;2007:4351-4354. [doi: 10.1109/IEMBS.2007.4353300] [Medline: 18002966]
40. Davoudi A, Malhotra KR, Shickel B, Siegel S, Williams S, Ruppert M, et al. Intelligent ICU for autonomous patient monitoring using pervasive sensing and deep learning. *Sci Rep* 2019 May 29;9(1):8020 [FREE Full text] [doi: 10.1038/s41598-019-44004-w] [Medline: 31142754]
41. Carros F, Meurer J, Löffler D, Unbehaun D, Matthies S, Koch I, et al. Exploring human-robot interaction with the elderly: results from a ten-week case study in a care home. In: Proceedings of the 2020 CHI Conference on Human Factors in Computing Systems. United States: Association for Computing Machinery; 2020 Presented at: CHI '20: CHI Conference on Human Factors in Computing Systems; April 25 - 30, 2020; Honolulu HI USA p. 1-12. [doi: 10.1145/3313831.3376402]
42. Chen D, Bharucha AJ, Wactlar HD. Intelligent video monitoring to improve safety of older persons. *Annu Int Conf IEEE Eng Med Biol Soc* 2007;2007:3814-3817. [doi: 10.1109/IEMBS.2007.4353163] [Medline: 18002829]
43. Tang V, Siu PK, Choy KL, Lam HY, Ho GT, Lee CK, et al. An adaptive clinical decision support system for serving the elderly with chronic diseases in healthcare industry. *Expert Syst* 2019 Jan 06;36(2):e12369. [doi: 10.1111/essy.12369]
44. Xiong GL, Bayen E, Nickels S, Subramaniam R, Agrawal P, Jacquemot J, et al. Real-time video detection of falls in dementia care facility and reduced emergency care. *Am J Manag Care* 2019 Jul;25(7):314-315 [FREE Full text] [Medline: 31318502]
45. Mervin MC, Moyle W, Jones C, Murfield J, Draper B, Beattie E, et al. The cost-effectiveness of using PARO, a therapeutic robotic seal, to reduce agitation and medication use in dementia: findings from a cluster-randomized controlled trial. *J Am Med Dir Assoc* 2018 Jul;19(7):619-622. [doi: 10.1016/j.jamda.2017.10.008] [Medline: 29325922]
46. Ala-Kitula A, Talvitie-Lamberg K, Tyrväinen P, Silvennoinen M. Developing solutions for healthcare? Deploying artificial intelligence to an evolving target. In: Proceedings of the International Conference on Computational Science and Computational Intelligence (CSCI). 2017 Presented at: International Conference on Computational Science and Computational Intelligence (CSCI); Dec. 14-16, 2017; Las Vegas, NV, USA. [doi: 10.1109/csci.2017.285]
47. Alwan M. Passive in-home health and wellness monitoring: overview, value and examples. In: Proceedings of the Annual International Conference of the IEEE Engineering in Medicine and Biology Society. 2009 Presented at: Annual International Conference of the IEEE Engineering in Medicine and Biology Society; Sept. 3-6, 2009; Minneapolis, MN, USA. [doi: 10.1109/iembs.2009.5333799]
48. Hirdes JP, Poss JW, Curtin-Telegdi N. The Method for Assigning Priority Levels (MAPLe): a new decision-support system for allocating home care resources. *BMC Med* 2008 Mar 26;6:9 [FREE Full text] [doi: 10.1186/1741-7015-6-9] [Medline: 18366782]
49. Yang Y, Hirdes JP, Dubin JA, Lee J. Fall risk classification in community-dwelling older adults using a smart wrist-worn device and the resident assessment instrument-home care: prospective observational study. *JMIR Aging* 2019 Jun 07;2(1):e12153 [FREE Full text] [doi: 10.2196/12153] [Medline: 31518278]

50. Zhu M, Chen W, Hirdes JP, Stolee P. The K-nearest neighbor algorithm predicted rehabilitation potential better than current Clinical Assessment Protocol. *J Clin Epidemiol* 2007 Oct;60(10):1015-1021. [doi: [10.1016/j.jclinepi.2007.06.001](https://doi.org/10.1016/j.jclinepi.2007.06.001)] [Medline: [17884595](https://pubmed.ncbi.nlm.nih.gov/17884595/)]
51. Zhu M, Zhang Z, Hirdes JP, Stolee P. Using machine learning algorithms to guide rehabilitation planning for home care clients. *BMC Med Inform Decis Mak* 2007 Dec 20;7(1):41 [FREE Full text] [doi: [10.1186/1472-6947-7-41](https://doi.org/10.1186/1472-6947-7-41)] [Medline: [18096079](https://pubmed.ncbi.nlm.nih.gov/18096079/)]
52. Bajo J, Corchado J, Rodriguez S. GR-MAS: multi-agent system for geriatric residences. In: Proceedings of the ECAI 18th European Conference on Artificial Intelligence. 2008 Presented at: ECAI 18th European Conference on Artificial Intelligence; 2008; Patras, Greece.
53. Yamamoto K, Yoshii M, Kinoshita F, Touyama H. Classification vs regression by cnn for handwashing skills evaluations in nursing education. In: Proceedings of the International Conference on Artificial Intelligence in Information and Communication (ICAIIIC). 2020 Presented at: International Conference on Artificial Intelligence in Information and Communication (ICAIIIC); Feb. 19-21, 2020; Fukuoka, Japan. [doi: [10.1109/icaaiic48513.2020.9064974](https://doi.org/10.1109/icaaiic48513.2020.9064974)]
54. Matsuyama Y, Taniyama H, Fujie S, Kobayashi T. System design of group communication activator: an entertainment task for elderly care. In: Proceedings of the 4th ACM/IEEE International Conference on Human Robot Interaction. 2009 Presented at: HRI09: International Conference on Human Robot Interaction; March 9 - 13, 2009; La Jolla California USA p. 243-244. [doi: [10.1145/1514095.1514157](https://doi.org/10.1145/1514095.1514157)]
55. Papageorgiou X, Chalvatzaki G, Dometios A, Tzafestas C, Maragos P. Intelligent assistive robotic systems for the elderly: two real-life use cases. In: Proceedings of the 10th International Conference on Pervasive Technologies Related to Assistive Environments. 2017 Presented at: PETRA '17: 10th International Conference on Pervasive Technologies Related to Assistive Environments; June 21 - 23, 2017; Island of Rhodes Greece p. 360-365. [doi: [10.1145/3056540.3076184](https://doi.org/10.1145/3056540.3076184)]
56. Tapia D, Rodriguez S, Corchado J. A distributed ambient intelligence based multi-agent system for Alzheimer health care. In: Hassanien AE, Abawajy J, Abraham A, Hagaras H, editors. *Pervasive Computing*. London: Springer; 2009:181-199.
57. Evans R, Kuttler K, Simpson K, Howe S, Crossno P, Johnson K, et al. Automated detection of physiologic deterioration in hospitalized patients. *J Am Med Inform Assoc* 2015 Mar;22(2):350-360 [FREE Full text] [doi: [10.1136/amiainl-2014-002816](https://doi.org/10.1136/amiainl-2014-002816)] [Medline: [25164256](https://pubmed.ncbi.nlm.nih.gov/25164256/)]
58. Ambagtsheer RC, Shafiabady N, Dent E, Seiboth C, Beilby J. The application of artificial intelligence (AI) techniques to identify frailty within a residential aged care administrative data set. *Int J Med Inform* 2020 Apr;136:104094. [doi: [10.1016/j.ijmedinf.2020.104094](https://doi.org/10.1016/j.ijmedinf.2020.104094)] [Medline: [32058264](https://pubmed.ncbi.nlm.nih.gov/32058264/)]
59. Al-Shaqi R, Mourshed M, Rezgui Y. Progress in ambient assisted systems for independent living by the elderly. *Springerplus* 2016 May 14;5(1):624 [FREE Full text] [doi: [10.1186/s40064-016-2272-8](https://doi.org/10.1186/s40064-016-2272-8)] [Medline: [27330890](https://pubmed.ncbi.nlm.nih.gov/27330890/)]
60. Khan SS, Ye B, Taati B, Mihailidis A. Detecting agitation and aggression in people with dementia using sensors - a systematic review. *Alzheimers Dement* 2018 Jun 20;14(6):824-832. [doi: [10.1016/j.jalz.2018.02.004](https://doi.org/10.1016/j.jalz.2018.02.004)] [Medline: [29571749](https://pubmed.ncbi.nlm.nih.gov/29571749/)]
61. Krishnan RH, Pugazhenth S. Mobility assistive devices and self-transfer robotic systems for elderly, a review. *Intel Serv Robotics* 2013 Dec 22;7(1):37-49. [doi: [10.1007/s11370-013-0142-6](https://doi.org/10.1007/s11370-013-0142-6)]
62. Zahia S, Zapiain MB, Sevillano X, González A, Kim PJ, Elmaghraby A. Pressure injury image analysis with machine learning techniques: a systematic review on previous and possible future methods. *Artif Intell Med* 2020 Jan;102:101742. [doi: [10.1016/j.artmed.2019.101742](https://doi.org/10.1016/j.artmed.2019.101742)] [Medline: [31980110](https://pubmed.ncbi.nlm.nih.gov/31980110/)]
63. Wai A, Fook F, Jayachandran M, Biswas J, Lee JE, Yap P. Implementation of context-aware distributed sensor network system for managing incontinence among patients with dementia. In: Proceedings of the International Conference on Body Sensor Networks. 2010 Presented at: International Conference on Body Sensor Networks; June 7-9, 2010; Singapore. [doi: [10.1109/bsn.2010.15](https://doi.org/10.1109/bsn.2010.15)]
64. Gerke S, Yeung S, Cohen IG. Ethical and legal aspects of ambient intelligence in hospitals. *J Am Med Assoc* 2020 Feb 18;323(7):601-602. [doi: [10.1001/jama.2019.21699](https://doi.org/10.1001/jama.2019.21699)] [Medline: [31977033](https://pubmed.ncbi.nlm.nih.gov/31977033/)]
65. Portacolone E, Halpern J, Luxenberg J, Harrison KL, Covinsky KE. Ethical issues raised by the introduction of artificial companions to older adults with cognitive impairment: a call for interdisciplinary collaborations. *J Alzheimer's Dis* 2020 Jul 21;76(2):445-455. [doi: [10.3233/jad-190952](https://doi.org/10.3233/jad-190952)]
66. McCradden MD, Baba A, Saha A, Ahmad S, Boparai K, Fadaiefard P, et al. Ethical concerns around use of artificial intelligence in health care research from the perspective of patients with meningioma, caregivers and health care providers: a qualitative study. *CMAJ Open* 2020 Feb 18;8(1):90-95 [FREE Full text] [doi: [10.9778/cmajo.20190151](https://doi.org/10.9778/cmajo.20190151)] [Medline: [32071143](https://pubmed.ncbi.nlm.nih.gov/32071143/)]
67. Wangmo T, Lipps M, Kressig RW, Ienca M. Ethical concerns with the use of intelligent assistive technology: findings from a qualitative study with professional stakeholders. *BMC Med Ethics* 2019 Dec 19;20(1):98 [FREE Full text] [doi: [10.1186/s12910-019-0437-z](https://doi.org/10.1186/s12910-019-0437-z)] [Medline: [31856798](https://pubmed.ncbi.nlm.nih.gov/31856798/)]
68. Cesta A, Pecora F, Bickmore T. The ROBOCARE Project: intelligent systems for elder care. AAAI Press. 2005. URL: <https://www.aaai.org/Papers/Symposia/Fall/2005/FS-05-02/FS05-02-005.pdf> [accessed 2021-11-18]
69. Gonzalez-Usach R, Collado V, Esteve M, Palau C. AAL open source system for the monitoring and intelligent control of nursing homes. In: Proceedings of the IEEE 14th International Conference on Networking, Sensing and Control (ICNSC).

- 2017 Presented at: IEEE 14th International Conference on Networking, Sensing and Control (ICNSC); May 16-18, 2017; Calabria, Italy. [doi: [10.1109/icnsc.2017.8000072](https://doi.org/10.1109/icnsc.2017.8000072)]
70. Shillan D, Sterne JAC, Champneys A, Gibbison B. Use of machine learning to analyse routinely collected intensive care unit data: a systematic review. *Crit Care* 2019 Aug 22;23(1):284 [FREE Full text] [doi: [10.1186/s13054-019-2564-9](https://doi.org/10.1186/s13054-019-2564-9)] [Medline: [31439010](https://pubmed.ncbi.nlm.nih.gov/31439010/)]
 71. Antink CH, Leonhardt S, Walter M. Reducing false alarms in the ICU by quantifying self-similarity of multimodal biosignals. *Physiol Meas* 2016 Aug 25;37(8):1233-1252. [doi: [10.1088/0967-3334/37/8/1233](https://doi.org/10.1088/0967-3334/37/8/1233)] [Medline: [27454256](https://pubmed.ncbi.nlm.nih.gov/27454256/)]
 72. Yu C, Liu J, Zhao H. Inverse reinforcement learning for intelligent mechanical ventilation and sedative dosing in intensive care units. *BMC Med Inform Decis Mak* 2019 Apr 09;19(Suppl 2):57 [FREE Full text] [doi: [10.1186/s12911-019-0763-6](https://doi.org/10.1186/s12911-019-0763-6)] [Medline: [30961594](https://pubmed.ncbi.nlm.nih.gov/30961594/)]
 73. Abe A, Ozaku H, Kuwahara N, Kogure K. Cooperation between abductive and inductive nursing risk management. In: *Proceedings of the Sixth IEEE International Conference on Data Mining - Workshops (ICDMW'06)*. 2006 Presented at: Sixth IEEE International Conference on Data Mining - Workshops (ICDMW'06); Dec. 18-22, 2006; Hong Kong, China. [doi: [10.1109/icdmw.2006.53](https://doi.org/10.1109/icdmw.2006.53)]
 74. Adlassnig K, Blacky A, Koller W. Artificial-intelligence-based hospital-acquired infection control. *Stud Health Technol Inform* 2009;149:103-110. [Medline: [19745475](https://pubmed.ncbi.nlm.nih.gov/19745475/)]
 75. Alam M, Heching A, Palmarini N. Scaling longitudinal functional health assessment in multi-inhabitant smarthome. In: *Proceedings of the IEEE 39th International Conference on Distributed Computing Systems (ICDCS)*. 2019 Presented at: IEEE 39th International Conference on Distributed Computing Systems (ICDCS); July 7-10, 2019; Dallas, TX, USA. [doi: [10.1109/icdcs.2019.00217](https://doi.org/10.1109/icdcs.2019.00217)]
 76. Alam M, Roy N, Holmes S, Gangopadhyay A, Galik E. Automated functional and behavioral health assessment of older adults with dementia. In: *Proceedings of the IEEE First International Conference on Connected Health: Applications, Systems and Engineering Technologies (CHASE)*. 2016 Presented at: IEEE First International Conference on Connected Health: Applications, Systems and Engineering Technologies (CHASE); June 27-29, 2016; Washington, DC, USA. [doi: [10.1109/chase.2016.16](https://doi.org/10.1109/chase.2016.16)]
 77. Albina E, Hernandez A. Designing an intelligent elderly behavior detection system. In: *Proceedings of the Fourth International Conference on Biosignals, Images and Instrumentation (ICBSII)*. 2018 Presented at: Fourth International Conference on Biosignals, Images and Instrumentation (ICBSII); March 22-24, 2018; Chennai, India. [doi: [10.1109/icbsii.2018.8524658](https://doi.org/10.1109/icbsii.2018.8524658)]
 78. Alnosayan N, Lee E, Alluhaidan A, Chatterjee S, Houston-Feenstra L, Kagoda M. MyHeart: an intelligent mHealth home monitoring system supporting heart failure self-care. In: *Proceedings of the IEEE 16th International Conference on e-Health Networking, Applications and Services (Healthcom)*. 2014 Presented at: IEEE 16th International Conference on e-Health Networking, Applications and Services (Healthcom); Oct. 15-18, 2014; Natal, Brazil. [doi: [10.1109/healthcom.2014.7001860](https://doi.org/10.1109/healthcom.2014.7001860)]
 79. An Y, Khare R, Song I, Hu X. Data exploration and knowledge discovery in a patient wellness tracking (PWT) system at a nurse-managed health services center. In: *Proceedings of the 2nd ACM SIGHIT International Health Informatics Symposium: Association for Computing Machinery*; 2012 Presented at: IHI '12: ACM International Health Informatics Symposium; January 28 - 30, 2012; Miami Florida USA p. 661-666. [doi: [10.1145/2110363.2110437](https://doi.org/10.1145/2110363.2110437)]
 80. Annangi P, Frigstad S, Subin S, Torp A, Ramasubramaniam S, Varna S. An automated bladder volume measurement algorithm by pixel classification using random forests. In: *Proceedings of the 38th Annual International Conference of the IEEE Engineering in Medicine and Biology Society (EMBC)*. 2016 Presented at: 38th Annual International Conference of the IEEE Engineering in Medicine and Biology Society (EMBC); Aug. 16-20, 2016; Orlando, FL, USA. [doi: [10.1109/embc.2016.7591633](https://doi.org/10.1109/embc.2016.7591633)]
 81. Barrué C, Annicchiarico R, Cortés U, Matínez-Velasco A, Martín EX, Campana F, et al. The i-Walker: An Intelligent Pedestrian Mobility Aid. Berlin: Springer; 2010:103-123.
 82. Antoniadi AM, Galvin M, Heverin M, Hardiman O, Mooney C. Prediction of caregiver burden in amyotrophic lateral sclerosis: a machine learning approach using random forests applied to a cohort study. *BMJ Open* 2020 Feb 28;10(2):e033109 [FREE Full text] [doi: [10.1136/bmjopen-2019-033109](https://doi.org/10.1136/bmjopen-2019-033109)] [Medline: [32114464](https://pubmed.ncbi.nlm.nih.gov/32114464/)]
 83. Arif D, Ahmad A, Bakar M, Ihtisham M, Winberg S. Cost effective solution for minimization of medical errors and acquisition of vitals by using autonomous nursing robot. In: *Proceedings of the 2017 International Conference on Information System and Data Mining*. 2017 Presented at: ICISDM '17: 2017 International Conference on Information System and Data Mining; April 1 - 3, 2017; Charleston SC USA p. 134-138. [doi: [10.1145/3077584.3077598](https://doi.org/10.1145/3077584.3077598)]
 84. Asif U, Von Cavallar S, Tang J, Harrer S. SSHFD: single shot human fall detection with occluded joints resilience. *arXiv*. 2020. URL: <https://arxiv.org/abs/2004.00797> [accessed 2021-11-18]
 85. Augustyniak P. Adaptive architecture for assisted living systems. In: *Proceedings of the 6th International Conference on Human System Interactions (HSI)*. 2013 Presented at: 6th International Conference on Human System Interactions (HSI); June 6-8, 2013; Sopot, Poland. [doi: [10.1109/hsi.2013.6577881](https://doi.org/10.1109/hsi.2013.6577881)]
 86. Au-Yeung WM, Sahani AK, Isselbacher EM, Armoundas AA. Reduction of false alarms in the intensive care unit using an optimized machine learning based approach. *NPJ Digit Med* 2019;2:86 [FREE Full text] [doi: [10.1038/s41746-019-0160-7](https://doi.org/10.1038/s41746-019-0160-7)] [Medline: [31508497](https://pubmed.ncbi.nlm.nih.gov/31508497/)]

87. Aziz O, Klenk J, Schwickert L, Chiari L, Becker C, Park EJ, et al. Validation of accuracy of SVM-based fall detection system using real-world fall and non-fall datasets. *PLoS One* 2017 Jul;12(7):e0180318 [[FREE Full text](#)] [doi: [10.1371/journal.pone.0180318](https://doi.org/10.1371/journal.pone.0180318)] [Medline: [28678808](#)]
88. Aziz O, Musngi M, Park EJ, Mori G, Robinovitch SN. A comparison of accuracy of fall detection algorithms (threshold-based vs. machine learning) using waist-mounted tri-axial accelerometer signals from a comprehensive set of falls and non-fall trials. *Med Biol Eng Comput* 2017 Jan;55(1):45-55. [doi: [10.1007/s11517-016-1504-y](https://doi.org/10.1007/s11517-016-1504-y)] [Medline: [27106749](#)]
89. Babic F, Jancus A, Melisova K. Customized web-based system for elderly people using elements of artificial intelligence. In: *Proceedings of the 2016 Federated Conference on Computer Science and Information Systems*. 2016 Presented at: *Federated Conference on Computer Science and Information Systems*; 2016; Gdansk, Poland p. 277-280. [doi: [10.15439/2016f165](https://doi.org/10.15439/2016f165)]
90. Bakola I, Bellos C, Bibas A, Koutsouris D, Fotiadis D. An Ambient Intelligent monitoring system to improve the independency of the elderly with balance disorders indoors. In: *Proceedings of the IEEE-EMBS International Conference on Biomedical and Health Informatics (BHI)*. 2014 Presented at: *IEEE-EMBS International Conference on Biomedical and Health Informatics (BHI)*; June 1-4, 2014; Valencia, Spain. [doi: [10.1109/bhi.2014.6864333](https://doi.org/10.1109/bhi.2014.6864333)]
91. Batata O, Augusto V, Xie X. Mixed machine learning and agent-based simulation for respite care evaluation. In: *Proceedings of the Winter Simulation Conference (WSC)*.: IEEE Press; 2018 Presented at: *Winter Simulation Conference (WSC)*; Dec. 9-12, 2018; Gothenburg, Sweden. [doi: [10.1109/wsc.2018.8632385](https://doi.org/10.1109/wsc.2018.8632385)]
92. Baxter GD, Monk AF, Tan K, Dear PR, Newell SJ. Using cognitive task analysis to facilitate the integration of decision support systems into the neonatal intensive care unit. *Artif Intell Med* 2005 Nov;35(3):243-257. [doi: [10.1016/j.artmed.2005.01.004](https://doi.org/10.1016/j.artmed.2005.01.004)] [Medline: [15994070](#)]
93. Becker M, Werkman E, Anastasopoulos M, Kleinberger T. Approaching ambient intelligent home care systems. In: *Proceedings of the Pervasive Health Conference and Workshops*. 2006 Presented at: *Pervasive Health Conference and Workshops*; Nov. 29 - Dec. 1, 2006; Innsbruck, Austria. [doi: [10.1109/pcthealth.2006.361656](https://doi.org/10.1109/pcthealth.2006.361656)]
94. Belshaw M, Taati B, Snoek J, Mihailidis A. Towards a single sensor passive solution for automated fall detection. *Annu Int Conf IEEE Eng Med Biol Soc* 2011;2011:1773-1776 [[FREE Full text](#)] [doi: [10.1109/IEMBS.2011.6090506](https://doi.org/10.1109/IEMBS.2011.6090506)] [Medline: [22254671](#)]
95. Bickmore T, Pfeifer L, Jack B. Taking the time to care: empowering low health literacy hospital patients with virtual nurse agents. In: *Proceedings of the SIGCHI Conference on Human Factors in Computing Systems*. USA: Association for Computing Machinery; 2009 Presented at: *CHI '09: CHI Conference on Human Factors in Computing Systems*; April 4 - 9, 2009; Boston MA USA p. 1265-1274. [doi: [10.1145/1518701.1518891](https://doi.org/10.1145/1518701.1518891)]
96. Bizjak J, Gradisek A, Gams M. Intelligent assistant for elderly. In: *Proceedings of the Twenty-Seventh International Joint Conference on Artificial Intelligence Demos*. 2018 Presented at: *Proceedings of the Twenty-Seventh International Joint Conference on Artificial Intelligence Demos*; July 13-19, 2018; Stockholm, Sweden p. 5808-5810. [doi: [10.24963/ijcai.2018/845](https://doi.org/10.24963/ijcai.2018/845)]
97. Bleda A, Maestre R, Beteta M, Vidal J. AmICare: ambient intelligent and assistive system for caregivers support. In: *Proceedings of the IEEE 16th International Conference on Embedded and Ubiquitous Computing (EUC)*. 2018 Presented at: *IEEE 16th International Conference on Embedded and Ubiquitous Computing (EUC)*; Oct. 29-31, 2018; Bucharest, Romania. [doi: [10.1109/euc.2018.00017](https://doi.org/10.1109/euc.2018.00017)]
98. Bono M, Sumi Y, Nishida T. Towards achieving complex medical engineering to understand conversational dynamics. In: *Proceedings of the IEEE/ICME International Conference on Complex Medical Engineering*. 2007 May Presented at: *IEEE/ICME International Conference on Complex Medical Engineering*; May 23-27, 2007; Beijing, China. [doi: [10.1109/iccme.2007.4381779](https://doi.org/10.1109/iccme.2007.4381779)]
99. Bouchard B, Roy P, Bouzouane A, Giroux S, Mihailidis A. An activity recognition model for Alzheimer's patients extension of the COACH task guidance system. In: *Proceedings of the 2008 Conference on ECAI 2008: 18th European Conference on Artificial Intelligence*. 2008 Presented at: *ECAI 2008: 18th European Conference on Artificial Intelligence*; June 27, 2008; Patras, Greece p. 811-812. [doi: [10.5555/1567281.1567482](https://doi.org/10.5555/1567281.1567482)]
100. Brom H, Carthon JM, Ikeaba U, Chittams J. Leveraging electronic health records and machine learning to tailor nursing care for patients at high risk for readmissions. *J Nurs Care Qual* 2020;35(1):27-33. [doi: [10.1097/NCQ.0000000000000412](https://doi.org/10.1097/NCQ.0000000000000412)] [Medline: [31136529](#)]
101. Campos W, Martinez A, Sanchez W, Estrada H, Castro-Sánchez NA, Mujica D. A systematic review of proposals for the social integration of elderly people using ambient intelligence and social networking sites. *Cogn Comput* 2016 Feb 12;8(3):529-542. [doi: [10.1007/s12559-016-9382-z](https://doi.org/10.1007/s12559-016-9382-z)]
102. Celi LA, Hinske LC, Alterovitz G, Szolovits P. An artificial intelligence tool to predict fluid requirement in the intensive care unit: a proof-of-concept study. *Crit Care* 2008;12(6):R151 [[FREE Full text](#)] [doi: [10.1186/cc7140](https://doi.org/10.1186/cc7140)] [Medline: [19046450](#)]
103. Cetin YE, Sarucan A. Nurse scheduling with opposition-based parallel harmony search algorithm. *J Intell Syst* 2017;28(4):0150. [doi: [10.1515/jisys-2017-0150](https://doi.org/10.1515/jisys-2017-0150)]
104. Chen Y, Chiang H, Yu C, Chiang C, Liu C, Wang J. An intelligent knowledge-based and customizable home care system framework with ubiquitous patient monitoring and alerting techniques. *Sensors (Basel)* 2012 Aug 10;12(8):11154-11186 [[FREE Full text](#)] [doi: [10.3390/s120811154](https://doi.org/10.3390/s120811154)] [Medline: [23112650](#)]

105. Cheng L, Zhu M, Poss JW, Hirdes JP, Glenny C, Stolee P. Opinion versus practice regarding the use of rehabilitation services in home care: an investigation using machine learning algorithms. *BMC Med Inform Decis Mak* 2015 Oct 09;15:80 [FREE Full text] [doi: [10.1186/s12911-015-0203-1](https://doi.org/10.1186/s12911-015-0203-1)] [Medline: [26453354](https://pubmed.ncbi.nlm.nih.gov/26453354/)]
106. Chouvarda I, Philip NY, Natsiavas P, Kilintzis V, Sobnath D, Kayyali R, et al. WELCOME – innovative integrated care platform using wearable sensing and smart cloud computing for COPD patients with comorbidities. *Conf Proc IEEE Eng Med Biol Soc* 2014;2014:3180-3183. [doi: [10.1109/EMBC.2014.6944298](https://doi.org/10.1109/EMBC.2014.6944298)] [Medline: [25570666](https://pubmed.ncbi.nlm.nih.gov/25570666/)]
107. Cismondi F, Fialho A, Lu X, Vieira S, Gray J, Reti S, et al. ANN validation system for ICU neonatal data. In: *Proceedings of the International Joint Conference on Neural Networks (IJCNN)*. 2012 Presented at: International Joint Conference on Neural Networks (IJCNN); June 10-15, 2012; Brisbane, QLD, Australia. [doi: [10.1109/ijcnn.2012.6252782](https://doi.org/10.1109/ijcnn.2012.6252782)]
108. Clark DG, Kapur P, Geldmacher DS, Brockington JC, Harrell L, DeRamus TP, et al. Latent information in fluency lists predicts functional decline in persons at risk for Alzheimer disease. *Cortex* 2014 Jun;55:202-218 [FREE Full text] [doi: [10.1016/j.cortex.2013.12.013](https://doi.org/10.1016/j.cortex.2013.12.013)] [Medline: [24556551](https://pubmed.ncbi.nlm.nih.gov/24556551/)]
109. Clavelle JT, Sweeney CD, Swartwout E, Lefton C, Guney S. Leveraging technology to sustain extraordinary care: a qualitative analysis of meaningful nurse recognition. *J Nurs Adm* 2019 Jun;49(6):303-309. [doi: [10.1097/NNA.0000000000000757](https://doi.org/10.1097/NNA.0000000000000757)] [Medline: [31135637](https://pubmed.ncbi.nlm.nih.gov/31135637/)]
110. Cramer EM, Seneviratne MG, Sharifi H, Ozturk A, Hernandez-Boussard T. Predicting the incidence of pressure ulcers in the intensive care unit using machine learning. *EGEMS (Wash DC)* 2019 Sep 05;7(1):49 [FREE Full text] [doi: [10.5334/egems.307](https://doi.org/10.5334/egems.307)] [Medline: [31534981](https://pubmed.ncbi.nlm.nih.gov/31534981/)]
111. Cresswell K, Callaghan M, Khan S, Sheikh Z, Mozaffar H, Sheikh A. Investigating the use of data-driven artificial intelligence in computerised decision support systems for health and social care: A systematic review. *Health Informatics J* 2020 Sep;26(3):2138-2147 [FREE Full text] [doi: [10.1177/1460458219900452](https://doi.org/10.1177/1460458219900452)] [Medline: [31964204](https://pubmed.ncbi.nlm.nih.gov/31964204/)]
112. Crump C, Saxena S, Wilson B, Farrell P, Rafiq A, Silvers CT. Using Bayesian networks and rule-based trending to predict patient status in the intensive care unit. *AMIA Annu Symp Proc* 2009 Nov 14;2009:124-128 [FREE Full text] [Medline: [20351835](https://pubmed.ncbi.nlm.nih.gov/20351835/)]
113. Cufoglu A, Chin J. Towards an understanding classification of well-being for care of older people. In: *Proceedings of the IEEE 13th International Conference on Industrial Informatics (INDIN)*. 2015 Presented at: IEEE 13th International Conference on Industrial Informatics (INDIN); July 22-24, 2015; Cambridge, UK. [doi: [10.1109/indin.2015.7281954](https://doi.org/10.1109/indin.2015.7281954)]
114. Cyras K, Karamlou A, Lee M, Letsios D, Misener R, Toni F. AI-assisted Schedule Explainer for Nurse Rostering. In: *Proceedings of the 19th International Conference on Autonomous Agents and MultiAgent Systems*. 2020 Presented at: AAMAS '19: International Conference on Autonomous Agents and Multiagent Systems; May 9 - 13, 2020; Auckland New Zealand p. 2101-2103. [doi: [10.5555/3398761.3399089](https://doi.org/10.5555/3398761.3399089)]
115. Di Pietro TL, Doran DM, McArthur G. Supportive decision making at the point of care: refinement of a case-based reasoning application for use in nursing practice. *Comput Inform Nurs* 2010;28(4):235-240. [doi: [10.1097/NCN.0b013e3181e1e77a](https://doi.org/10.1097/NCN.0b013e3181e1e77a)] [Medline: [20571376](https://pubmed.ncbi.nlm.nih.gov/20571376/)]
116. Ding B, Chang P, Wang P, Li H, Kuo M. Design of an Intelligent Nursing Clinical Pathway and Nursing Order Support System for Traditional Chinese Medicine. In: *Studies in Health Technology and Informatics*. Amsterdam: IOS Press; 2017:1014-1018.
117. Dingli A, Abela C. A pervasive assistant for nursing and doctoral staff. In: *Proceedings of the 18th European Conference on Artificial Intelligence (ECAI 2008)*. 2008 Presented at: 18th European Conference on Artificial Intelligence (ECAI 2008); 27 June 2008; Patras, Greece p. 829-830. [doi: [10.5555/1567281.1567491](https://doi.org/10.5555/1567281.1567491)]
118. Durieux BN, Gramling CJ, Manukyan V, Eppstein MJ, Rizzo DM, Ross LM, et al. Identifying in palliative care consultations: a tandem machine-learning and human coding method. *J Palliat Med* 2018 Dec;21(12):1755-1760. [doi: [10.1089/jpm.2018.0270](https://doi.org/10.1089/jpm.2018.0270)] [Medline: [30328760](https://pubmed.ncbi.nlm.nih.gov/30328760/)]
119. Easton K, Potter S, Bec R, Bennion M, Christensen H, Grindell C, et al. A Virtual Agent to Support Individuals Living With Physical and Mental Comorbidities: Co-Design and Acceptability Testing. *J Med Internet Res* 2019 May 30;21(5):e12996 [FREE Full text] [doi: [10.2196/12996](https://doi.org/10.2196/12996)] [Medline: [31148545](https://pubmed.ncbi.nlm.nih.gov/31148545/)]
120. Eerikäinen LM, Vanschoren J, Rooijakkers MJ, Vullings R, Aarts RM. Reduction of false arrhythmia alarms using signal selection and machine learning. *Physiol Meas* 2016 Aug;37(8):1204-1216. [doi: [10.1088/0967-3334/37/8/1204](https://doi.org/10.1088/0967-3334/37/8/1204)] [Medline: [27454128](https://pubmed.ncbi.nlm.nih.gov/27454128/)]
121. Esfahani S, Muthukumar V, Regentova E, Taghva K, Trabia M. Complex Food Recognition using Hyper-Spectral Imagery. In: *Proceedings of the 10th Annual Computing and Communication Workshop and Conference (CCWC)*. 2020 Presented at: 10th Annual Computing and Communication Workshop and Conference (CCWC); Jan. 6-8, 2020; Las Vegas, NV, USA. [doi: [10.1109/ccwc47524.2020.9031258](https://doi.org/10.1109/ccwc47524.2020.9031258)]
122. Fan X, Zhao Y, Wang H, Tsui KL. Forecasting one-day-forward wellness conditions for community-dwelling elderly with single lead short electrocardiogram signals. *BMC Med Inform Decis Mak* 2019 Dec 30;19(1):285 [FREE Full text] [doi: [10.1186/s12911-019-1012-8](https://doi.org/10.1186/s12911-019-1012-8)] [Medline: [31888608](https://pubmed.ncbi.nlm.nih.gov/31888608/)]
123. Feng P, Yu M, Naqvi S, Chambers J. Deep learning for posture analysis in fall detection. In: *Proceedings of the 19th International Conference on Digital Signal Processing*. 2014 Presented at: 19th International Conference on Digital Signal Processing; Aug. 20-23, 2014; Hong Kong, China. [doi: [10.1109/icdsp.2014.6900806](https://doi.org/10.1109/icdsp.2014.6900806)]

124. Feng T, Narayanan S. Modeling Behavioral Consistency in Large-Scale Wearable Recordings of Human Bio-Behavioral Signals. In: Proceedings of the IEEE International Conference on Acoustics, Speech and Signal Processing (ICASSP). 2020 Presented at: IEEE International Conference on Acoustics, Speech and Signal Processing (ICASSP); May 4-8, 2020; Barcelona, Spain. [doi: [10.1109/icassp40776.2020.9054493](https://doi.org/10.1109/icassp40776.2020.9054493)]
125. Fernandes CO, Miles S, Lucena CJP, Cowan D. Artificial Intelligence Technologies for Coping with Alarm Fatigue in Hospital Environments Because of Sensory Overload: Algorithm Development and Validation. *J Med Internet Res* 2019 Nov 26;21(11):e15406 [FREE Full text] [doi: [10.2196/15406](https://doi.org/10.2196/15406)] [Medline: [31769762](https://pubmed.ncbi.nlm.nih.gov/31769762/)]
126. Fleury A, Vacher M, Noury N. SVM-based multimodal classification of activities of daily living in Health Smart Homes: sensors, algorithms, and first experimental results. *IEEE Trans Inf Technol Biomed* 2010 Mar;14(2):274-283. [doi: [10.1109/TITB.2009.2037317](https://doi.org/10.1109/TITB.2009.2037317)] [Medline: [20007037](https://pubmed.ncbi.nlm.nih.gov/20007037/)]
127. Freed M, Burns B, Heller A, Sanchez D, Beaumont-Bowman S. A Virtual Assistant to Help Dysphagia Patients Eat Safely at Home. In: Proceedings of the Twenty-Fifth International Joint Conference on Artificial Intelligence (IJCAI-16). 2016 Presented at: Twenty-Fifth International Joint Conference on Artificial Intelligence (IJCAI-16); July 9–15, 2016; New York USA URL: <https://www.ijcai.org/Proceedings/16/Papers/642.pdf>
128. Ganesh D, Seshadri G, Sokkanarayanan S, Rajan S, Sathiyarayanan M. IoT-based Google Duplex Artificial Intelligence Solution for Elderly Care. In: International Conference on Contemporary Computing and Informatics (IC3I). 2019 Presented at: International Conference on contemporary Computing and Informatics (IC3I); Dec. 12-14, 2019; Singapore. [doi: [10.1109/ic3i46837.2019.9055551](https://doi.org/10.1109/ic3i46837.2019.9055551)]
129. Gannod G, Abbott K, Haitsma K, Martindale N, Jennings R, Long C. Using machine learning to facilitate the delivery of person centered care in nursing homes. In: Proceedings of the Thirty-First International Florida Artificial Intelligence Research Society Conference, FLAIRS 2018. 2018 Presented at: Thirty-First International Florida Artificial Intelligence Research Society Conference, FLAIRS 2018; May 21-23, 2018; Florida, USA URL: <https://www.semanticscholar.org/paper/Using-Machine-Learning-to-Facilitate-the-Delivery-Gannod-Abbott/c363ede498cbb4cc110b78bd4d0bed86b7c1561b#extracted>
130. Gargees R, Keller J, Popescu M. Early illness recognition in older adults using transfer learning. In: Proceedings of the IEEE International Conference on Bioinformatics and Biomedicine (BIBM). 2017 Presented at: IEEE International Conference on Bioinformatics and Biomedicine (BIBM); Nov. 13-16, 2017; Kansas City, MO, USA. [doi: [10.1109/bibm.2017.8217795](https://doi.org/10.1109/bibm.2017.8217795)]
131. Ghose S, Mitra J, Karunanithi M, Dowling J. Human Activity Recognition from Smart-Phone Sensor Data using a Multi-Class Ensemble Learning in Home Monitoring. In: Studies in Health Technology and Informatics. Amsterdam: IOS Press; 2015:62-67.
132. Ghosh N, Maity S, Maity K, Saha S. Non-Parametric Learning Technique for Activity Recognition in Elderly Patients. In: Proceedings of the IEEE Region 10 Conference (TENCON). 2019 Presented at: IEEE Region 10 Conference (TENCON); Oct. 17-20, 2019; Kochi, India. [doi: [10.1109/tencon.2019.8929511](https://doi.org/10.1109/tencon.2019.8929511)]
133. Gochoo M, Tan T, Velusamy V, Liu S, Bayanduuren D, Huang S. Device-Free Non-Privacy Invasive Classification of Elderly Travel Patterns in A Smart House Using PIR Sensors and DCNN. *IEEE Sensors J* 2020:1-1. [doi: [10.1109/jsen.2017.2771287](https://doi.org/10.1109/jsen.2017.2771287)]
134. Gomes DC, Oliveira LESE, Cubas MR, Barra CMCM. Use of computational tools as support to the cross-mapping method between clinical terminologies. *Texto contexto - enferm* 2019;28:-. [doi: [10.1590/1980-265x-tce-2017-0187](https://doi.org/10.1590/1980-265x-tce-2017-0187)]
135. Gómez-Sebastià I, Moreno J, Álvarez-Napagao S, García-Gasulla D, Barriú C, Cortés U. Situated Agents and Humans in Social Interaction for Elderly Healthcare: From Coaalas to AVICENA. *J Med Syst* 2016 Feb;40(2):38. [doi: [10.1007/s10916-015-0371-7](https://doi.org/10.1007/s10916-015-0371-7)] [Medline: [26590976](https://pubmed.ncbi.nlm.nih.gov/26590976/)]
136. Grgurić A, Mošmondor M, Huljenić D. The SmartHabits: An Intelligent Privacy-Aware Home Care Assistance System. *Sensors (Basel)* 2019 Feb 21;19(4):- [FREE Full text] [doi: [10.3390/s19040907](https://doi.org/10.3390/s19040907)] [Medline: [30795587](https://pubmed.ncbi.nlm.nih.gov/30795587/)]
137. Haigh KZ, Kiff LM, Ho G. The Independent LifeStyle Assistant: lessons learned. *Assist Technol* 2006 Mar 31;18(1):87-106. [doi: [10.1080/10400435.2006.10131909](https://doi.org/10.1080/10400435.2006.10131909)] [Medline: [16796244](https://pubmed.ncbi.nlm.nih.gov/16796244/)]
138. Hever G, Cohen L, O'Connor MF, Matot I, Lerner B, Bitan Y. Machine learning applied to multi-sensor information to reduce false alarm rate in the ICU. *J Clin Monit Comput* 2020 Apr;34(2):339-352. [doi: [10.1007/s10877-019-00307-x](https://doi.org/10.1007/s10877-019-00307-x)] [Medline: [30955160](https://pubmed.ncbi.nlm.nih.gov/30955160/)]
139. Hiissa M, Pahikkala T, Suominen H, Lehtikunnas T, Back B, Karsten H, et al. Towards automated classification of intensive care nursing narratives. *Int J Med Inform* 2007 Dec;76 Suppl 3:362-368. [doi: [10.1016/j.ijmedinf.2007.03.003](https://doi.org/10.1016/j.ijmedinf.2007.03.003)] [Medline: [17513166](https://pubmed.ncbi.nlm.nih.gov/17513166/)]
140. Howcroft J, Kofman J, Lemaire ED. Feature selection for elderly faller classification based on wearable sensors. *J Neuroeng Rehabil* 2017 May 30;14(1):47 [FREE Full text] [doi: [10.1186/s12984-017-0255-9](https://doi.org/10.1186/s12984-017-0255-9)] [Medline: [28558724](https://pubmed.ncbi.nlm.nih.gov/28558724/)]
141. Hsu C, Chien Y, Yu G, Koppen M, Chen S, Niu X. An intelligent fuzzy affective computing system for elderly living alone. In: Proceedings of the Ninth International Conference on Hybrid Intelligent Systems. 2009 Presented at: Ninth International Conference on Hybrid Intelligent Systems; Aug 12-14, 2009; Shenyang, China. [doi: [10.1109/his.2009.318](https://doi.org/10.1109/his.2009.318)]

142. Hsu C, Wang M, Shen H, Chiang R, Wen C. FallCare+: An IoT surveillance system for fall detection. In: Proceedings of the 2017 International Conference on Applied System Innovation (ICASI). 2017 Presented at: 2017 International Conference on Applied System Innovation (ICASI); May 13-17, 2017; Sapporo, Japan p. 13-17. [doi: [10.1109/icas.2017.7988590](https://doi.org/10.1109/icas.2017.7988590)]
143. Hsu H, Cheng Z, Shih T, Chen C, editors. RFID-based personalized behavior modeling. In: Proceedings of the Symposia and Workshops on Ubiquitous, Autonomic and Trusted Computing. 2009 Presented at: Symposia and Workshops on Ubiquitous, Autonomic and Trusted Computing; Jul 7-9, 2009; Brisbane, QLD, Australia. [doi: [10.1109/uic-atc.2009.29](https://doi.org/10.1109/uic-atc.2009.29)]
144. Hu X, Chu D, Li Z, Dai R, Cui Y, Zhou Z, et al. Coarse-to-fine activity annotation and recognition algorithm for solitary older adults. *IEEE Access* 2020;8:4051-4064. [doi: [10.1109/access.2019.2962843](https://doi.org/10.1109/access.2019.2962843)]
145. Huimin Q, Yaobin M, Wenbo X, Zhiquan W. Home environment fall detection system based on a cascaded multi-SVM classifier. In: Proceedings of the 10th International Conference on Control, Automation, Robotics and Vision. 2008 Presented at: 10th International Conference on Control, Automation, Robotics and Vision; Dec 17-20, 2008; Hanoi, Vietnam p. 17-20. [doi: [10.1109/icarcv.2008.4795758](https://doi.org/10.1109/icarcv.2008.4795758)]
146. Hunter J, Gatt A, Portet F, Reiter E, Sripada S. Using natural language generation technology to improve information flows in intensive care units. In: Proceedings of the ECAI 2008 - 18th European Conference on Artificial Intelligence. 2008 Presented at: ECAI 2008 - 18th European Conference on Artificial Intelligence; Jul 21-25, 2008; Patras, Greece. [doi: [10.3233/978-1-58603-891-5-678](https://doi.org/10.3233/978-1-58603-891-5-678)]
147. Inoue S, Mairitha T, Mairitha N, Hossain T. Integrating activity recognition and nursing care records: the system, experiment, and the dataset. In: Proceedings of the Joint 8th International Conference on Informatics, Electronics & Vision (ICIEV) and 2019 3rd International Conference on Imaging, Vision & Pattern Recognition (icIVPR). 2019 Presented at: Joint 8th International Conference on Informatics, Electronics & Vision (ICIEV) and 2019 3rd International Conference on Imaging, Vision & Pattern Recognition (icIVPR); May 30- Jun 2, 2019; Spokane, WA, USA. [doi: [10.1109/iciev.2019.8858584](https://doi.org/10.1109/iciev.2019.8858584)]
148. Jalal A, Kamal S, Kim D. A depth video sensor-based life-logging human activity recognition system for elderly care in smart indoor environments. *Sensors (Basel)* 2014 Jul 02;14(7):11735-11759 [FREE Full text] [doi: [10.3390/s140711735](https://doi.org/10.3390/s140711735)] [Medline: [24991942](https://pubmed.ncbi.nlm.nih.gov/24991942/)]
149. Jin S. An intelligent multi-sensor surveillance system for elderly care. *SmartCR* 2012;2(5):296-307. [doi: [10.6029/smarter.2012.04.006](https://doi.org/10.6029/smarter.2012.04.006)]
150. Jing Y, Eastwood M, Tan B, Konios A, Hamid A, Collinson M. An intelligent well-being monitoring system for residents in extra care homes. In: Proceedings of the IML 2017: International Conference on Internet of Things and Machine Learning. 2017 Presented at: IML 2017: International Conference on Internet of Things and Machine Learning; Oct 17 - 18, 2017; Liverpool United Kingdom. [doi: [10.1145/3109761.3109769](https://doi.org/10.1145/3109761.3109769)]
151. Johnson WG. CI for a DSS to predict nursing coverage in a geriatric care facility. *Stud Health Technol Inform* 2006;122:86-90. [Medline: [17102223](https://pubmed.ncbi.nlm.nih.gov/17102223/)]
152. Jordan D, Rose SE. Multimedia abstract generation of intensive care data: the automation of clinical processes through AI methodologies. *World J Surg* 2010 Apr;34(4):637-645. [doi: [10.1007/s00268-009-0319-5](https://doi.org/10.1007/s00268-009-0319-5)] [Medline: [20012610](https://pubmed.ncbi.nlm.nih.gov/20012610/)]
153. Juang L, Wu M. Abnormal action tracking using robot vision system. In: Proceedings of the International Joint Conference on Awareness Science and Technology & Ubi-Media Computing (iCAST 2013 & UMEDIA 2013)l action tracking using robot vision system. International Joint Conference on Awareness Science and Technology & Ubi-Media Computing (iCAST & UMEDIA). 2013 Presented at: International Joint Conference on Awareness Science and Technology & Ubi-Media Computing (iCAST 2013 & UMEDIA 2013)l action tracking using robot vision system. International Joint Conference on Awareness Science and Technology & Ubi-Media Computing (iCAST & UMEDIA); Nov. 2-4, 2013; Aizu-Wakamatsu, Japan p. 2-4. [doi: [10.1109/icawst.2013.6765480](https://doi.org/10.1109/icawst.2013.6765480)]
154. Juang L, Wu M. Fall down detection under smart home system. *J Med Syst* 2015 Oct 15;39(10):107. [doi: [10.1007/s10916-015-0286-3](https://doi.org/10.1007/s10916-015-0286-3)] [Medline: [26276014](https://pubmed.ncbi.nlm.nih.gov/26276014/)]
155. Jung H, Park H. Development and evaluation of a prototype CDSS for fall prevention. *Stud Health Technol Inform* 2019 Aug 21;264:1700-1701. [doi: [10.3233/SHTI190604](https://doi.org/10.3233/SHTI190604)] [Medline: [31438300](https://pubmed.ncbi.nlm.nih.gov/31438300/)]
156. Jung K, Covington S, Sen CK, Januszyk M, Kirsner RS, Gurtner GC, et al. Rapid identification of slow healing wounds. *Wound Repair Regen* 2016;24(1):181-188 [FREE Full text] [doi: [10.1111/wrr.12384](https://doi.org/10.1111/wrr.12384)] [Medline: [26606167](https://pubmed.ncbi.nlm.nih.gov/26606167/)]
157. Kaewprag P, Newton C, Vermillion B, Hyun S, Huang K, Machiraju R. Predictive modeling for pressure ulcers from intensive care unit electronic health records. *AMIA Jt Summits Transl Sci Proc* 2015;2015:82-86 [FREE Full text] [Medline: [26306245](https://pubmed.ncbi.nlm.nih.gov/26306245/)]
158. Kalidas V, Tamil LS. Cardiac arrhythmia classification using multi-modal signal analysis. *Physiol Meas* 2016 Aug 25;37(8):1253-1272. [doi: [10.1088/0967-3334/37/8/1253](https://doi.org/10.1088/0967-3334/37/8/1253)] [Medline: [27454417](https://pubmed.ncbi.nlm.nih.gov/27454417/)]
159. Kang KJ, Ka B, Kim SJ. A service scenario generation scheme based on association rule mining for elderly surveillance system in a smart home environment. *Eng Appl Artif Intell* 2012 Oct;25(7):1355-1364. [doi: [10.1016/j.engappai.2012.02.003](https://doi.org/10.1016/j.engappai.2012.02.003)]
160. Kao H, Hosseinmardi H, Yan S, Hasan M, Narayanan S, Lerman K. Discovering Latent Psychological Structures from Self-Report Assessments of Hospital Workers. In: Proceedings of the 5th International Conference on Behavioral, Economic, and Socio-Cultural Computing (BESC). 2018 Presented at: 5th International Conference on Behavioral, Economic, and Socio-Cultural Computing (BESC); Nov. 12-14, 2018; Kaohsiung, Taiwan. [doi: [10.1109/besc.2018.8697325](https://doi.org/10.1109/besc.2018.8697325)]

161. van Kasteren TL, Englebienne G, Kröse BJ. An activity monitoring system for elderly care using generative and discriminative models. *Pers Ubiquit Comput* 2010 Feb 26;14(6):489-498. [doi: [10.1007/s00779-009-0277-9](https://doi.org/10.1007/s00779-009-0277-9)]
162. Khan S, Zhu T, Ye B, Mihailidis A, Iaboni A, Newman K. DAAD: a framework for detecting agitation and aggression in people living with dementia using a novel multi-modal sensor network. In: *Proceedings of the IEEE International Conference on Data Mining Workshops (ICDMW)*. 2017 Presented at: IEEE International Conference on Data Mining Workshops (ICDMW); Nov. 18-21, 2017; New Orleans, LA, USA p. 18-21. [doi: [10.1109/icdmw.2017.98](https://doi.org/10.1109/icdmw.2017.98)]
163. Khosla R, Chu M. Embodying care in Matilda. *ACM Trans Manage Inf Syst* 2013 Dec;4(4):1-33. [doi: [10.1145/2544104](https://doi.org/10.1145/2544104)]
164. Kingetsu H, Konno T, Awai S, Fukuda D, Sonoda T. Video-based Fall Risk Detection System for the Elderly. In: *Proceedings of the IEEE 1st Global Conference on Life Sciences and Technologies (LifeTech)*. 2019 Presented at: IEEE 1st Global Conference on Life Sciences and Technologies (LifeTech); March 12-14, 2019; Osaka, Japan. [doi: [10.1109/lifetech.2019.8883958](https://doi.org/10.1109/lifetech.2019.8883958)]
165. Kobayashi Y, Yamazaki K, Yamazaki A, Gyoda M, Tabata T, Kuno Y. Care robot able to show the order of service provision through bodily actions in multi-party settings. In: *Proceedings of the CHI EA '12: CHI '12 Extended Abstracts on Human Factors in Computing Systems*. 2012 Presented at: CHI EA '12: CHI '12 Extended Abstracts on Human Factors in Computing Systems; May 5 - 10, 2012; Austin Texas USA. [doi: [10.1145/2212776.2223724](https://doi.org/10.1145/2212776.2223724)]
166. Krüger F, Heine C, Bader S, Hein A, Teipel S, Kirste T. On the applicability of clinical observation tools for human activity annotation. In: *Proceedings of the IEEE International Conference on Pervasive Computing and Communications Workshops (PerCom Workshops)*. 2017 Presented at: IEEE International Conference on Pervasive Computing and Communications Workshops (PerCom Workshops); March 13-17, 2017; Kona, HI, USA. [doi: [10.1109/percomw.2017.7917545](https://doi.org/10.1109/percomw.2017.7917545)]
167. Kubota N, Hiroyuki K, Taniguchi K, Sawayama T. State estimation based on a spiking neural network using ultrasonic oscillators. In: *Proceedings of the World Automation Congress*. 2008 Presented at: World Automation Congress; Sept. 28 - Oct. 2, 2008; Waikoloa, HI, USA URL: <https://ieeexplore.ieee.org/document/4698994?arnumber=4698994>
168. Kumar M, Teso S, Causmaecker P, Raedt L. Automating personnel rostering by learning constraints using tensors. In: *Proceedings of the IEEE 31st International Conference on Tools with Artificial Intelligence (ICTAI)*. 2019 Presented at: IEEE 31st International Conference on Tools with Artificial Intelligence (ICTAI); Nov. 4-6, 2019; Portland, OR, USA. [doi: [10.1109/ictai.2019.00102](https://doi.org/10.1109/ictai.2019.00102)]
169. Kundu S, Acharyya S. A SAT approach for solving the nurse scheduling problem. In: *Proceedings of the TENCON 2008 - IEEE Region 10 Conference*. 2008 Presented at: TENCON 2008 - IEEE Region 10 Conference; Nov. 19-21, 2008; Hyderabad, India. [doi: [10.1109/tencon.2008.4766380](https://doi.org/10.1109/tencon.2008.4766380)]
170. Kuspinar A, Hirdes JP, Berg K, McArthur C, Morris JN. Development and validation of an algorithm to assess risk of first-time falling among home care clients. *BMC Geriatr* 2019 Oct 14;19(1):264 [FREE Full text] [doi: [10.1186/s12877-019-1300-2](https://doi.org/10.1186/s12877-019-1300-2)] [Medline: [31610776](https://pubmed.ncbi.nlm.nih.gov/31610776/)]
171. Lea C, Facker J, Hager G, Taylor R, Saria S. 3d sensing algorithms towards building an intelligent intensive care unit. *AMIA Jt Summits Transl Sci Proc* 2013;2013:136-140 [FREE Full text] [Medline: [24303253](https://pubmed.ncbi.nlm.nih.gov/24303253/)]
172. Lee H, Kim J, Yang D, Kim JH. Embedded real-time fall detection using deep learning for elderly care. *arXiv*. 2017. URL: <https://arxiv.org/abs/1711.11200> [accessed 2021-11-18]
173. Lehman EP, Krishnan RG, Zhao X, Mark RG, Lehman LH. Representation learning approaches to detect false arrhythmia alarms from ECG dynamics. *Proc Mach Learn Res* 2018 Aug;85:571-586 [FREE Full text] [Medline: [31723938](https://pubmed.ncbi.nlm.nih.gov/31723938/)]
174. Xiaochun L, jianan C, Guangcai L, Feilong C, Longshen W. A design and implementation of an intelligent care system for the elderly based on internet of things. In: *Proceedings of the Eleventh International Conference on Advanced Computational Intelligence (ICACI)*. 2019 Presented at: Eleventh International Conference on Advanced Computational Intelligence (ICACI); June 7-9, 2019; Guilin, China. [doi: [10.1109/icaci.2019.8778502](https://doi.org/10.1109/icaci.2019.8778502)]
175. Li D, Mathews C. Automated measurement of pressure injury through image processing. *J Clin Nurs* 2017 Nov;26(21-22):3564-3575. [doi: [10.1111/jocn.13726](https://doi.org/10.1111/jocn.13726)] [Medline: [28071843](https://pubmed.ncbi.nlm.nih.gov/28071843/)]
176. Li M, Xu G, He B, Ma X, Xie J. Pre-impact fall detection based on a modified zero moment point criterion using data from kinect sensors. *IEEE Sensors J* 2018 Jul 1;18(13):5522-5531. [doi: [10.1109/jsen.2018.2833451](https://doi.org/10.1109/jsen.2018.2833451)]
177. Li Q, Clifford GD. Signal quality and data fusion for false alarm reduction in the intensive care unit. *J Electrocardiol* 2012;45(6):596-603. [doi: [10.1016/j.jelectrocard.2012.07.015](https://doi.org/10.1016/j.jelectrocard.2012.07.015)] [Medline: [22960167](https://pubmed.ncbi.nlm.nih.gov/22960167/)]
178. Liao P, Hsu P, Chu W, Chu W. Applying artificial intelligence technology to support decision-making in nursing: a case study in Taiwan. *Health Informatics J* 2015 Jun;21(2):137-148. [doi: [10.1177/1460458213509806](https://doi.org/10.1177/1460458213509806)] [Medline: [26021669](https://pubmed.ncbi.nlm.nih.gov/26021669/)]
179. Lim S, Chung L, Han O, Kim JH. An interactive cyber-physical system (CPS) for people with disability and frail elderly people. In: *Proceedings of the 5th International Conference on Ubiquitous Information Management and Communication*. 2011 Presented at: ICUIMC '11: The 5th International Conference on Ubiquitous Information Management and Communication; February 21 - 23, 2011; Seoul Korea p. 1-8. [doi: [10.1145/1968613.1968745](https://doi.org/10.1145/1968613.1968745)]
180. Liu W, Chuang K, Chen K. The Design and Implementation of a Chatbot's Character for Elderly Care. In: *Proceedings of the International Conference on System Science and Engineering (ICSSE)*. 2018 Presented at: International Conference on System Science and Engineering (ICSSE); June 28-30, 2018; New Taipei, Taiwan. [doi: [10.1109/icsse.2018.8520008](https://doi.org/10.1109/icsse.2018.8520008)]
181. Lo C, Lin C, Wang C, Dai T, Wong D. Artificial immune systems for intelligent nurse rostering. In: *Proceedings of the IEEE International Conference on Industrial Engineering and Engineering Management*. 2007 Presented at: IEEE International

- Conference on Industrial Engineering and Engineering Management; Dec. 2-4, 2007; Singapore. [doi: [10.1109/ieem.2007.4419313](https://doi.org/10.1109/ieem.2007.4419313)]
182. Lodhi MK, Ansari R, Yao Y, Keenan GM, Wilkie D, Khokhar AA. Predicting hospital re-admissions from nursing care data of hospitalized patients. *Adv Data Min* 2017;2017:181-193 [FREE Full text] [doi: [10.1007/978-3-319-62701-4_14](https://doi.org/10.1007/978-3-319-62701-4_14)] [Medline: [29104962](https://pubmed.ncbi.nlm.nih.gov/29104962/)]
 183. Luo L, Li J, Liu C, Shen W. Using machine-learning methods to support health-care professionals in making admission decisions. *Int J Health Plann Manage* 2019 Apr 07;34(2):1236-1246. [doi: [10.1002/hpm.2769](https://doi.org/10.1002/hpm.2769)] [Medline: [30957270](https://pubmed.ncbi.nlm.nih.gov/30957270/)]
 184. Luo S, Zhao C, Fu Y. An intelligent human activity recognition method with incremental learning capability for bedridden patients. In: *Proceedings of the 15th International Conference on Control, Automation, Robotics and Vision (ICARCV)*. 2018 Presented at: 15th International Conference on Control, Automation, Robotics and Vision (ICARCV); Nov. 18-21, 2018; Singapore. [doi: [10.1109/icarcv.2018.8581232](https://doi.org/10.1109/icarcv.2018.8581232)]
 185. Luperto M, Romeo M, Lunardini F, Basilico N, Jones R, Cangelosi A, et al. Digitalized cognitive assessment mediated by a virtual caregiver. In: *Proceedings of the Twenty-Seventh International Joint Conference on Artificial Intelligence Demos*. 2018 Presented at: Twenty-Seventh International Joint Conference on Artificial Intelligence (IJCAI-18); July 13 - 19, 2018; Stockholm Sweden p. 5841-5843. [doi: [10.24963/ijcai.2018/856](https://doi.org/10.24963/ijcai.2018/856)]
 186. Lutrek M, Kalua B, Cvetkovi B, Dovgan E, Gjoreski H, Mirchevska V, et al. Confidence: Ubiquitous care system to support independent living. In: *Proceedings of the European Conference on Artificial Intelligence – ECAI*. 2012 Presented at: European Conference on Artificial Intelligence – ECAI; Aug 27-31, 2012; France URL: https://www.researchgate.net/publication/289078287_Confidence_Ubiquitous_care_system_to_support_independent_living
 187. Luu T, Phan R, Davey R, Chetty G, editors. A multilevel NER framework for automatic clinical name entity recognition. In: *Proceedings of the IEEE International Conference on Data Mining Workshops (ICDMW)*. 2017 Presented at: IEEE International Conference on Data Mining Workshops (ICDMW); Nov. 18-21, 2017; New Orleans, LA, USA. [doi: [10.1109/icdmw.2017.161](https://doi.org/10.1109/icdmw.2017.161)]
 188. Machanje D, Orero J, Marsala C. Distress recognition from speech analysis: a pairwise association rules-based approach. In: *Proceedings of the IEEE Symposium Series on Computational Intelligence (SSCI)*. 2019 Presented at: IEEE Symposium Series on Computational Intelligence (SSCI); Dec. 6-9, 2019; Xiamen, China. [doi: [10.1109/ssci44817.2019.9002972](https://doi.org/10.1109/ssci44817.2019.9002972)]
 189. Magyar J, Kobayashi M, Nishio S, Sin?ák P, Ishiguro H. Autonomous robotic dialogue system with reinforcement learning for elderlies with dementia. In: *Proceedings of the 2019 IEEE International Conference on Systems, Man and Cybernetics (SMC)*. 2019 Presented at: IEEE International Conference on Systems, Man and Cybernetics (SMC); Oct. 6-9, 2019; Bari, Italy. [doi: [10.1109/smc.2019.8914248](https://doi.org/10.1109/smc.2019.8914248)]
 190. Mamun K, Sharma A, Hoque A, Szecsi T. Remote patient physical condition monitoring service module for iWARD hospital robots. In: *Proceedings of the Asia-Pacific World Congress on Computer Science and Engineering*. 2014 Presented at: Asia-Pacific World Congress on Computer Science and Engineering; Nov. 4-5, 2014; Nadi, Fiji. [doi: [10.1109/apwccse.2014.7053854](https://doi.org/10.1109/apwccse.2014.7053854)]
 191. Manna T, Swetapadma A, Abdar M. Decision tree predictive learner-based approach for false alarm detection in ICU. *J Med Syst* 2019 May 21;43(7):191. [doi: [10.1007/s10916-019-1337-y](https://doi.org/10.1007/s10916-019-1337-y)] [Medline: [31115734](https://pubmed.ncbi.nlm.nih.gov/31115734/)]
 192. Mano L. Emotional condition in the health smart homes environment: emotion recognition using ensemble of classifiers. In: *Proceedings of the Innovations in Intelligent Systems and Applications (INISTA)*. 2018 Presented at: Innovations in Intelligent Systems and Applications (INISTA); July 3-5, 2018; Thessaloniki, Greece. [doi: [10.1109/inista.2018.8466318](https://doi.org/10.1109/inista.2018.8466318)]
 193. Marafino BJ, Boscardin WJ, Dudley RA. Efficient and sparse feature selection for biomedical text classification via the elastic net: application to ICU risk stratification from nursing notes. *J Biomed Inform* 2015 Apr;54:114-120 [FREE Full text] [doi: [10.1016/j.jbi.2015.02.003](https://doi.org/10.1016/j.jbi.2015.02.003)] [Medline: [25700665](https://pubmed.ncbi.nlm.nih.gov/25700665/)]
 194. Masafumi Y, Tomohiro Y, Takeshi F. Study on effect of MOGA with interactive island model using visualization. In: *Proceedings of the IEEE Congress on Evolutionary Computation*. 2010 Presented at: IEEE Congress on Evolutionary Computation; July 18-23, 2010; Barcelona, Spain. [doi: [10.1109/cec.2010.5585950](https://doi.org/10.1109/cec.2010.5585950)]
 195. Merico D, Bisiani R, Malizia F, Rizzi G, Ali H. Demonstrating contexta-CARE: a situation-aware system for supporting independent living. In: *Proceedings of the 7th International Conference on Pervasive Computing Technologies for Healthcare*. 2013 Presented at: 7th International Conference on Pervasive Computing Technologies for Healthcare; May 5 - Aug 5, 2013; Venice, Italy. [doi: [10.4108/icst.pervasivehealth.2013.252048](https://doi.org/10.4108/icst.pervasivehealth.2013.252048)]
 196. Mihailidis A, Boger J, Canido M, Hoey J. The use of an intelligent prompting system for people with dementia. *Interactions* 2007 Jul;14(4):34-37. [doi: [10.1145/1273961.1273982](https://doi.org/10.1145/1273961.1273982)]
 197. Mitabe N, Shinomiya N. An intelligent care support system for the elderly with an autonomous robot in ambient sensors. In: *Proceedings of the IEEE 6th Global Conference on Consumer Electronics (GCCE)*. 2017 Presented at: IEEE 6th Global Conference on Consumer Electronics (GCCE); Oct. 24-27, 2017; Nagoya, Japan. [doi: [10.1109/gcce.2017.8229483](https://doi.org/10.1109/gcce.2017.8229483)]
 198. Mitabe N, Shinomiya N. An intelligent support system for elderly care with RFID tags and a cleaning robot. In: *Proceedings of the 12th International Conference on Sensing Technology (ICST)*. 2018 Presented at: 12th International Conference on Sensing Technology (ICST); 2018; Limerick, Ireland. [doi: [10.1109/icsenst.2018.8603574](https://doi.org/10.1109/icsenst.2018.8603574)]

199. Miyawaki F, Masamune K, Suzuki S, Yoshimitsu K, Vain J. Scrub nurse robot system—intraoperative motion analysis of a scrub nurse and timed-automata-based model for surgery. *IEEE Trans Ind Electron* 2005 Oct;52(5):1227-1235. [doi: [10.1109/tie.2005.855692](https://doi.org/10.1109/tie.2005.855692)]
200. Mori Y, Ikeura R, Ding M. Using tactile sensors to estimate care receiver position on dual arms of robot. In: *Proceedings of the IEEE Conference SENSORS*. 2013 Presented at: IEEE Conference SENSORS; Nov. 3-6, 2013; Baltimore, MD, USA. [doi: [10.1109/icsens.2013.6688439](https://doi.org/10.1109/icsens.2013.6688439)]
201. Morita K, Fuketa M, Aoe JI, Yasuda K. Improved dialogue communication systems for individuals with dementia. *Int J Comput Appl Technol* 2015;52(2/3):127. [doi: [10.1504/ijcat.2015.071973](https://doi.org/10.1504/ijcat.2015.071973)]
202. Morita T, Taki K, Fujimoto M, Suwa H, Arakawa Y, Yasumoto K. BLE beacon-based activity monitoring system toward automatic generation of daily report. In: *Proceedings of the IEEE International Conference on Pervasive Computing and Communications Workshops (PerCom Workshops)*. 2018 Presented at: IEEE International Conference on Pervasive Computing and Communications Workshops (PerCom Workshops); March 19-23, 2018; Athens, Greece. [doi: [10.1109/percomw.2018.8480348](https://doi.org/10.1109/percomw.2018.8480348)]
203. Muckell J, Young Y, Leventhal M. A wearable motion tracking system to reduce direct care worker injuries. In: *Proceedings of the 2017 International Conference on Digital Health*. 2017 Presented at: DH '17: International Conference on Digital Health; July 2 - 5, 2017; London United Kingdom p. 1-6. [doi: [10.1145/3079452.3079493](https://doi.org/10.1145/3079452.3079493)]
204. Naya F, Ohmura R, Miyamae M, Noma H, Kogure K, Imai M. Wireless sensor network system for supporting nursing context-awareness. *Int J Autonom Adapt Commun Syst* 2011;4(4):361. [doi: [10.1504/ijaacs.2011.043477](https://doi.org/10.1504/ijaacs.2011.043477)]
205. Nguyen-Truong CK, Fritz RL. Health-assistive smart homes for aging in place: leading the way for integration of the asian immigrant minority voice. *Asian Pac Isl Nurs J* 2018;3(4):154-159 [FREE Full text] [doi: [10.31372/20180304.1087](https://doi.org/10.31372/20180304.1087)] [Medline: [31037263](https://pubmed.ncbi.nlm.nih.gov/31037263/)]
206. Nie G, Ullal A, Swanson A, Weitlauf A, Warren Z, Sarkar N. Design of an intelligent and immersive system to facilitate the social interaction between caregivers and young children with autism. In: *Proceedings of the International Conference on Human-Computer Interaction*. 2019 Presented at: HCI 2019: International Conference on Human-Computer Interaction Universal Access in Human-Computer Interaction Multimodality and Assistive Environments; July 26-31, 2019; Orlando, FL, USA. [doi: [10.1007/978-3-030-23563-5_11](https://doi.org/10.1007/978-3-030-23563-5_11)]
207. Nii M, Ando S, Takahashi Y, Uchinuno A, Sakashita R. Feature extraction from nursing-care texts for classification. In: *World Automation Congress*. 2008 Presented at: World Automation Congress; Sept. 28 - Oct. 2, 2008; Waikoloa, HI, USA p. - URL: <https://ieeexplore.ieee.org/document/4698973?arnumber=4698973>
208. Nii M, Ando S, Takahashi Y, Uchinuno A, Sakashita R. Nursing-care freestyle text classification using support vector machines. In: *Proceedings of the IEEE International Conference on Granular Computing (GRC)*. 2007 Presented at: IEEE International Conference on Granular Computing (GRC); Nov. 2-4, 2007; Fremont, CA, USA. [doi: [10.1109/grc.2007.131](https://doi.org/10.1109/grc.2007.131)]
209. Nii M, Miyake S, Takahama K, Uchinuno A, Sakashita R. Consideration about utilizing text architecture for making feature vectors in classifying nursing-care texts. In: *Proceedings of the IEEE International Conference on Systems, Man, Cybernetics*. 2013 Presented at: IEEE International Conference on Systems, Man, Cybernetics; Oct. 13-16, 2013; Manchester, UK p. 13-16. [doi: [10.1109/smc.2013.313](https://doi.org/10.1109/smc.2013.313)]
210. Nii M, Okajima S, Sakashita R, Hamada M, Kobashi S. Tongue movement classification in chewing and swallowing using electromyography. In: *Proceedings of the 6th International Conference on Informatics, Electronics and Vision & 7th International Symposium in Computational Medical and Health Technology (ICIEV-ISCMHT)*. 2017 Presented at: 6th International Conference on Informatics, Electronics and Vision & 2017 7th International Symposium in Computational Medical and Health Technology (ICIEV-ISCMHT); Sept. 1-3, 2017; Himeji, Japan. [doi: [10.1109/iciev.2017.8338594](https://doi.org/10.1109/iciev.2017.8338594)]
211. Nii M, Takahama K, Uchinuno A, Sakashita R. A directed graph based feature definition for classifying nursing-care texts. In: *Proceedings of the IEEE International Conference on Systems, Man, Cybernetics (SMC)*. 2014 Presented at: IEEE International Conference on Systems, Man, Cybernetics (SMC); Oct. 5-8, 2014; San Diego, CA, USA. [doi: [10.1109/smc.2014.6974504](https://doi.org/10.1109/smc.2014.6974504)]
212. Nii M, Takahama K, Uchinuno A, Sakashita R. A matrix-based feature vector definition and a SVM-BDT-based classification system for classifying nursing-care texts. In: *Proceedings of the 2015 IEEE International Conference on Fuzzy Systems (FUZZ-IEEE)*. 2015 Presented at: 2015 IEEE International Conference on Fuzzy Systems (FUZZ-IEEE); Aug. 2-5, 2015; Istanbul, Turkey. [doi: [10.1109/fuzz-ieee.2015.7337976](https://doi.org/10.1109/fuzz-ieee.2015.7337976)]
213. Nii M, Takahama K, Uchinuno A, Sakashita R. Soft class decision for nursing-care text classification using a k-nearest neighbor based system. In: *Proceedings of the 2014 IEEE International Conference on Fuzzy Systems (FUZZ-IEEE)*. 2014 Presented at: 2014 IEEE International Conference on Fuzzy Systems (FUZZ-IEEE); July 6-11, 2014; Beijing, China. [doi: [10.1109/fuzz-ieee.2014.6891739](https://doi.org/10.1109/fuzz-ieee.2014.6891739)]
214. Nii M, Tsuchida Y, Iwamoto T, Uchinuno A, Sakashita R. Nursing-care text evaluation using word vector representations realized by word2vec. In: *Proceedings of the IEEE International Conference on Fuzzy Systems (FUZZ-IEEE)*. 2016 Jul Presented at: 2016 IEEE International Conference on Fuzzy Systems (FUZZ-IEEE); July 24-29, 2016; Vancouver, BC, Canada. [doi: [10.1109/fuzz-ieee.2016.7737960](https://doi.org/10.1109/fuzz-ieee.2016.7737960)]

215. Nii M, Yamaguchi T, Takahashi Y, Sakashita R, Uchinuno A. Analysis of nursing-care freestyle Japanese text classification using ga-based term selection. In: Proceedings of the World Automation Congress. 2010 Presented at: World Automation Congress; Sept 19-23, 2010; Kobe, Japan.
216. Nii M, Yamaguchi T, Takahashi Y, Uchinuno A, Sakashita R. Fuzzy Rule Extraction from Nursing-Care Texts. In: Proceedings of the 39th International Symposium on Multiple-Valued Logic. 2009 Presented at: 39th International Symposium on Multiple-Valued Logic; May 21-23, 2009; Naha, Japan. [doi: [10.1109/ismvl.2009.61](https://doi.org/10.1109/ismvl.2009.61)]
217. Niiuchi R, Kang H, Iwamura K. Detection of human motion gestures using machine learning for actual emergency situations. In: Proceedings of the IEEE 7th Global Conference on Consumer Electronics (GCCE). 2018 Presented at: IEEE 7th Global Conference on Consumer Electronics (GCCE); Oct. 9-12, 2018; Nara, Japan. [doi: [10.1109/gcce.2018.8574609](https://doi.org/10.1109/gcce.2018.8574609)]
218. Nishio S, Hossain B, Yagi N, Nii M, Hiranaka T, Kobashi S. Surgical phase recognition method with a sequential consistency for CAOS-AI navigation system. In: Proceedings of the IEEE 2nd Global Conference on Life Sciences and Technologies (LifeTech). 2020 Presented at: IEEE 2nd Global Conference on Life Sciences and Technologies (LifeTech); March 10-12, 2020; Kyoto, Japan. [doi: [10.1109/lifetech48969.2020.1570619203](https://doi.org/10.1109/lifetech48969.2020.1570619203)]
219. Nouira K, Trabelsi A. Intelligent monitoring system for intensive care units. *J Med Syst* 2012 Aug;36(4):2309-2318. [doi: [10.1007/s10916-011-9698-x](https://doi.org/10.1007/s10916-011-9698-x)] [Medline: [21505862](https://pubmed.ncbi.nlm.nih.gov/21505862/)]
220. Nuutinen M, Leskelä RL, Suojalehto E, Tirronen A, Komssi V. Development and validation of classifiers and variable subsets for predicting nursing home admission. *BMC Med Inform Decis Mak* 2017 Apr 13;17(1):39 [FREE Full text] [doi: [10.1186/s12911-017-0442-4](https://doi.org/10.1186/s12911-017-0442-4)] [Medline: [28407806](https://pubmed.ncbi.nlm.nih.gov/28407806/)]
221. O'Brien K, Liggett A, Ramirez-Zohfeld V, Sunkara P, Lindquist LA. Voice-controlled intelligent personal assistants to support aging in place. *J Am Geriatr Soc* 2020 Jan 16;68(1):176-179. [doi: [10.1111/jgs.16217](https://doi.org/10.1111/jgs.16217)] [Medline: [31617581](https://pubmed.ncbi.nlm.nih.gov/31617581/)]
222. Ohura N, Mitsuno R, Sakisaka M, Terabe Y, Morishige Y, Uchiyama A, et al. Convolutional neural networks for wound detection: the role of artificial intelligence in wound care. *J Wound Care* 2019 Oct 01;28(Sup10):13-24. [doi: [10.12968/jowc.2019.28.Sup10.S13](https://doi.org/10.12968/jowc.2019.28.Sup10.S13)] [Medline: [31600101](https://pubmed.ncbi.nlm.nih.gov/31600101/)]
223. Okano T, Kitakoshi D, Suzuki M. A preliminary study on preventive care system based on game playing with communication robots. In: Proceedings of the Conference on Technologies and Applications of Artificial Intelligence. 2013 Presented at: 2013 Conference on Technologies and Applications of Artificial Intelligence; Dec. 6-8, 2013; Taipei, Taiwan. [doi: [10.1109/taai.2013.29](https://doi.org/10.1109/taai.2013.29)]
224. Ongena F, Duysburgh P, Verstraete M, Sulmon N, Bleumers L, Jacobs A. User-driven design of a context-aware application: an ambient-intelligent nurse call system. In: Proceedings of the User-Centered Design of Pervasive Healthcare Applications Conference. 2012 Presented at: User-Centered Design of Pervasive Healthcare Applications Conference; May 21, 2012; San Diego, United States. [doi: [10.4108/icst.pervasivehealth.2012.248699](https://doi.org/10.4108/icst.pervasivehealth.2012.248699)]
225. Ostojic D, Guglielmini S, Moser V, Fauchère JC, Bucher HU, Bassler D, et al. Reducing false alarm rates in neonatal intensive care: a new machine learning approach. *Adv Exp Med Biol* 2020;1232:285-290. [doi: [10.1007/978-3-030-34461-0_36](https://doi.org/10.1007/978-3-030-34461-0_36)] [Medline: [31893422](https://pubmed.ncbi.nlm.nih.gov/31893422/)]
226. Pahl C, Varadarajan K. Emotional feedback for service robots using haptic-acoustic interface. In: Proceedings of the Pattern Recognition Association of South Africa and Robotics and Mechatronics International Conference (PRASA-RobMech). 2015 Presented at: Pattern Recognition Association of South Africa and Robotics and Mechatronics International Conference (PRASA-RobMech); Nov. 26-27, 2015; Port Elizabeth, South Africa. [doi: [10.1109/robomech.2015.7359526](https://doi.org/10.1109/robomech.2015.7359526)]
227. Park C, Kim J, Chen J, Ma H, Stojmenovic I. A location and emergency monitoring system for elder care using ZigBee. In: Proceedings of the Seventh International Conference on Mobile Ad-hoc and Sensor Networks. 2011 Presented at: Seventh International Conference on Mobile Ad-hoc and Sensor Networks; Dec.16-18, 2011; Beijing, China. [doi: [10.1109/msn.2011.87](https://doi.org/10.1109/msn.2011.87)]
228. Park JI, Bliss DZ, Chi C, Delaney CW, Westra BL. Knowledge discovery with machine learning for hospital-acquired catheter-associated urinary tract infections. *Comput Inform Nurs* 2020 Jan;38(1):28-35 [FREE Full text] [doi: [10.1097/CIN.0000000000000562](https://doi.org/10.1097/CIN.0000000000000562)] [Medline: [31524687](https://pubmed.ncbi.nlm.nih.gov/31524687/)]
229. Park S, Won DD, Lee BJ, Escobedo D, Esteva A, Aalipour A, et al. A mountable toilet system for personalized health monitoring via the analysis of excreta. *Nat Biomed Eng* 2020 Jun;4(6):624-635 [FREE Full text] [doi: [10.1038/s41551-020-0534-9](https://doi.org/10.1038/s41551-020-0534-9)] [Medline: [32251391](https://pubmed.ncbi.nlm.nih.gov/32251391/)]
230. Pascual J, Sanz-Bobi M, Contreras D, Azevedo L, Londral A. Intelligent system for assisting elderly people at home. In: Proceedings of the First International Conference on Health Informatics. 2008 Presented at: First International Conference on Health Informatics; Jan 28-31, 2008; Funchal, Madeira, Portugal. [doi: [10.5220/0001036901590163](https://doi.org/10.5220/0001036901590163)]
231. Patrick J, Li M. An ontology for clinical questions about the contents of patient notes. *J Biomed Inform* 2012 Apr;45(2):292-306 [FREE Full text] [doi: [10.1016/j.jbi.2011.11.008](https://doi.org/10.1016/j.jbi.2011.11.008)] [Medline: [22142949](https://pubmed.ncbi.nlm.nih.gov/22142949/)]
232. Patterson BW, Engstrom CJ, Sah V, Smith MA, Mendonça EA, Pulia MS, et al. Training and interpreting machine learning algorithms to evaluate fall risk after emergency department visits. *Med Care* 2019 Jul;57(7):560-566 [FREE Full text] [doi: [10.1097/MLR.0000000000001140](https://doi.org/10.1097/MLR.0000000000001140)] [Medline: [31157707](https://pubmed.ncbi.nlm.nih.gov/31157707/)]
233. Paul A, Wan E, Adenwala F, Schafermeyer E, Preiser N, Kaye J, et al. MobileRF: a robust device-free tracking system based on a hybrid neural network HMM classifier. *Proc ACM Int Conf Ubiquitous Comput* 2014;2014:159-170 [FREE Full text] [doi: [10.1145/2632048.2632097](https://doi.org/10.1145/2632048.2632097)] [Medline: [25544964](https://pubmed.ncbi.nlm.nih.gov/25544964/)]

234. Pessemier T, Doms S, Martens L. A food recommender for patients in a care facility. In: Proceedings of the 7th ACM conference on Recommender systems. 2013 Presented at: RecSys '13: 7th ACM conference on Recommender systems; October 12 - 16, 2013; Hong Kong China. [doi: [10.1145/2507157.2507198](https://doi.org/10.1145/2507157.2507198)]
235. Phan R, Luu T, Davey R, Chetty G. Enhancing clinical name entity recognition based on hybrid deep learning scheme. In: Proceedings of the International conference on Data Mining Workshops (ICDMW). 2019 Presented at: International Conference on Data Mining Workshops (ICDMW); Nov. 8-11, 2019; Beijing, China. [doi: [10.1109/icdmw.2019.00153](https://doi.org/10.1109/icdmw.2019.00153)]
236. Ramanujam E, Padmavathi S. A vision-based posture monitoring system for the elderly using intelligent fall detection technique. In: Guide to Ambient Intelligence in the IoT Environment. Cham: Springer; 2019:249-269.
237. Richter J, Hirtz G. Novel methods for feature extraction based on motion history images and evaluation with regard to altering viewing angles. In: Proceedings of the IEEE Third International Conference on Consumer Electronics, Berlin (ICCE-Berlin)el methods for feature extraction based on motion history images and evaluation with regard to altering viewing angles. IEEE Third International Conference on Consumer Electronics, Berlin (ICCE-Berlin). 2013 Presented at: IEEE Third International Conference on Consumer Electronics, Berlin (ICCE-Berlin)el methods for feature extraction based on motion history images and evaluation with regard to altering viewing angles. IEEE Third International Conference on Consumer Electronics, Berlin (ICCE-Berlin); Sept.9-11, 2013; Berlin, Germany. [doi: [10.1109/icce-berlin.2013.6697978](https://doi.org/10.1109/icce-berlin.2013.6697978)]
238. Robben S, Bosch L, Wiggers P, Decancq J, Kanis M. Managing flexible care with a context aware system for ageing-in-place. In: Proceedings of the 9th International Conference on Pervasive Computing Technologies for Healthcare (PervasiveHealth): ICST (Institute for Computer Sciences, Social-Informatics and Telecommunications Engineering); 2015 Presented at: 9th International Conference on Pervasive Computing Technologies for Healthcare (PervasiveHealth); May 20-23, 2015; Istanbul, Turkey. [doi: [10.4108/icst.pervasivehealth.2015.259229](https://doi.org/10.4108/icst.pervasivehealth.2015.259229)]
239. Rouleau G, Gagnon M, Côté J, Payne-Gagnon J, Hudson E, Dubois C. Impact of information and communication technologies on nursing care: results of an overview of systematic reviews. J Med Internet Res 2017 Apr 25;19(4):e122 [[FREE Full text](#)] [doi: [10.2196/jmir.6686](https://doi.org/10.2196/jmir.6686)] [Medline: [28442454](https://pubmed.ncbi.nlm.nih.gov/28442454/)]
240. Sadahiro T, Hamazaki M, Miyawaki F, Yoshimitsu K, Masamune K. Laparoscopic skill measurement with COP to realize a HAM Scrub Nurse Robot system. In: Proceedings of the IEEE International Conference on Systems, Man and Cybernetics. 2007 Presented at: IEEE International Conference on Systems, Man and Cybernetics; Oct. 7-10, 2007; Montreal, QC, Canada. [doi: [10.1109/icsmc.2007.4413969](https://doi.org/10.1109/icsmc.2007.4413969)]
241. Sadreazami H, Bolic M, Rajan S. On the use of ultra wideband radarstacked LSTM-RNN for at home fall detection. In: Proceedings of the IEEE Life Sciences Conference (LSC). 2018 Presented at: IEEE Life Sciences Conference (LSC); Oct. 28-30, 2018; Montreal, QC. Canada. [doi: [10.1109/lsc.2018.8572048](https://doi.org/10.1109/lsc.2018.8572048)]
242. Sadreazami H, Bolic M, Rajan S. Residual network-based supervised learning of remotely sensed fall incidents using ultra-wideband radar. In: Proceedings of the IEEE International Symposium on Circuits and Systems (ISCAS). 2019 Presented at: IEEE International Symposium on Circuits and Systems (ISCAS); May 26-29, 2019; Sapporo, Japan. [doi: [10.1109/iscas.2019.8702446](https://doi.org/10.1109/iscas.2019.8702446)]
243. Sadreazami H, Bolic M, Rajan S. CapsFall: fall detection using ultra-wideband radar and capsule network. IEEE Access 2019;7:55336-55343. [doi: [10.1109/access.2019.2907925](https://doi.org/10.1109/access.2019.2907925)]
244. Sakakibara S, Saiki S, Nakamura M, Yasuda K, Duffy V. Generating personalized dialogue towards daily counseling system for home dementia care. In: Digital Human Modeling. Applications in Health, Safety, Ergonomics, and Risk Management: Health and Safety. Cham: Springer; 2017.
245. Samra H, Li A, Soh B, Alzain M. A conceptual model for an intelligent simulation-based learning management system using a data mining agent in clinical skills education. In: Proceedings of the 4th International Conference on Enterprise Systems (ES). 2016 Presented at: 4th International Conference on Enterprise Systems (ES); Nov. 2-3, 2016; Melbourne, VIC, Australia. [doi: [10.1109/es.2016.17](https://doi.org/10.1109/es.2016.17)]
246. Scalzo F, Hu X. Semi-supervised detection of intracranial pressure alarms using waveform dynamics. Physiol Meas 2013 Apr;34(4):465-478. [doi: [10.1088/0967-3334/34/4/465](https://doi.org/10.1088/0967-3334/34/4/465)] [Medline: [23524637](https://pubmed.ncbi.nlm.nih.gov/23524637/)]
247. Scalzo F, Liebeskind D, Hu X. Reducing false intracranial pressure alarms using morphological waveform features. IEEE Trans Biomed Eng 2013 Jan;60(1):235-239 [[FREE Full text](#)] [doi: [10.1109/TBME.2012.2210042](https://doi.org/10.1109/TBME.2012.2210042)] [Medline: [22851230](https://pubmed.ncbi.nlm.nih.gov/22851230/)]
248. Sharma V, Sharma V, Khan A, Wassmer DJ, Schoenholtz MD, Hontecillas R, et al. Malnutrition, health and the role of machine learning in clinical setting. Front Nutr 2020;7:44 [[FREE Full text](#)] [doi: [10.3389/fnut.2020.00044](https://doi.org/10.3389/fnut.2020.00044)] [Medline: [32351968](https://pubmed.ncbi.nlm.nih.gov/32351968/)]
249. Shen V, Horng-Yih L, Ah-Fur L. Application of high-level fuzzy petri nets to fall detection system using smartphone. In: Proceedings of the International Conference on Machine Learning and Cybernetics. 2013 Presented at: International Conference on Machine Learning and Cybernetics; July 14-17, 2013; Tianjin, China. [doi: [10.1109/icmlc.2013.6890807](https://doi.org/10.1109/icmlc.2013.6890807)]
250. Shieh Y, Shieh M. Consumer electronics-based intelligent alert system for unattended elderly residents. In: Proceedings of the IEEE International Symposium on Consumer Electronics (ISCE). 2013 Presented at: IEEE International Symposium on Consumer Electronics (ISCE); June 3-6, 2013; Hsinchu, Taiwan. [doi: [10.1109/isce.2013.6570140](https://doi.org/10.1109/isce.2013.6570140)]
251. Si H, Kim S, Kawanishi N, Morikawa H. A context-aware reminding system for daily activities of dementia patients. In: Proceedings of the 27th International Conference on Distributed Computing Systems Workshops (ICDCSW'07). 2007

- Presented at: 27th International Conference on Distributed Computing Systems Workshops (ICDCSW'07); June 22-29, 2007; Toronto, ON, Canada. [doi: [10.1109/icdcs.2007.8](https://doi.org/10.1109/icdcs.2007.8)]
252. Si H, Kim S, Kawanishi N, Morikawa H. An guidance system based on q-learning for supporting dementia patient's activities of daily living. In: Proceedings of the 4th IEEE Consumer Communications and Networking Conference. 2007 Presented at: 4th IEEE Consumer Communications and Networking Conference; Jan. 11-13, 2007; Las Vegas, NV. [doi: [10.1109/ccnc.2007.252](https://doi.org/10.1109/ccnc.2007.252)]
 253. Singh H, Yadav G, Mallaiah R, Joshi P, Joshi V, Kaur R, et al. iNICU - Integrated neonatal care unit: capturing neonatal journey in an intelligent data way. *J Med Syst* 2017 Aug;41(8):132 [FREE Full text] [doi: [10.1007/s10916-017-0774-8](https://doi.org/10.1007/s10916-017-0774-8)] [Medline: [28748430](https://pubmed.ncbi.nlm.nih.gov/28748430/)]
 254. Sinn CJ, Jones A, McMullan JL, Ackerman N, Curtin-Telegdi N, Eckel L, et al. Derivation and validation of the Personal Support Algorithm: an evidence-based framework to inform allocation of personal support services in home and community care. *BMC Health Serv Res* 2017 Nov 25;17(1):775 [FREE Full text] [doi: [10.1186/s12913-017-2737-7](https://doi.org/10.1186/s12913-017-2737-7)] [Medline: [29178868](https://pubmed.ncbi.nlm.nih.gov/29178868/)]
 255. Soni P, Choudhary A. Automated fall detection from a camera using support vector machine. In: Proceedings of the Second International Conference on Advanced Computational and Communication Paradigms (ICACCP). 2019 Presented at: Second International Conference on Advanced Computational and Communication Paradigms (ICACCP); Feb. 25-28, 2019; Gangtok, India. [doi: [10.1109/icaccp.2019.8882966](https://doi.org/10.1109/icaccp.2019.8882966)]
 256. Steins K, Walther SM. A generic simulation model for planning critical care resource requirements. *Anaesthesia* 2013 Nov;68(11):1148-1155 [FREE Full text] [doi: [10.1111/anae.12408](https://doi.org/10.1111/anae.12408)] [Medline: [24032602](https://pubmed.ncbi.nlm.nih.gov/24032602/)]
 257. Stiglic G, Kokol P. Intelligent patient and nurse scheduling in ambulatory health care centers. In: Proceedings of the IEEE Engineering in Medicine and Biology 27th Annual Conference. 2005 Presented at: IEEE Engineering in Medicine and Biology 27th Annual Conference; Jan. 17-18, 2006; Shanghai, China. [doi: [10.1109/iembs.2005.1615722](https://doi.org/10.1109/iembs.2005.1615722)]
 258. Su C, Chiang C. Pervasive community care platform: ambient Intelligence leveraging sensor networks and mobile agents. *Int J Syst Sci* 2013 Jun 14;45(4):778-797. [doi: [10.1080/00207721.2013.807384](https://doi.org/10.1080/00207721.2013.807384)]
 259. Suryadevara N, Mukhopadhyay S. An intelligent system for continuous monitoring of wellness of an inhabitant for sustainable future. In: Proceedings of the IEEE Region 10 Humanitarian Technology Conference (R10 HTC). 2014 Presented at: IEEE Region 10 Humanitarian Technology Conference (R10 HTC); Aug. 6-9, 2014; Chennai, India. [doi: [10.1109/r10-htc.2014.7026314](https://doi.org/10.1109/r10-htc.2014.7026314)]
 260. Suryadevara N, Quazi T, Mukhopadhyay S. Intelligent sensing systems for measuring wellness indices of the daily activities for the elderly. In: Proceedings of the Eighth International Conference on Intelligent Environments. 2012 Presented at: Eighth International Conference on Intelligent Environments; June 26-29, 2012; Guanajuato, Mexico. [doi: [10.1109/ie.2012.49](https://doi.org/10.1109/ie.2012.49)]
 261. Suzuki T, Jose Y, Nakauchi Y. A medication support system for an elderly person based on intelligent environment technologies. In: Proceedings of the IEEE International Conference on Systems, Man, Cybernetics. 2011 Presented at: IEEE International Conference on Systems, Man, and Cybernetics; Oct. 9-12, 2011; Anchorage, AK, USA. [doi: [10.1109/icsmc.2011.6084163](https://doi.org/10.1109/icsmc.2011.6084163)]
 262. Swangnetr M, Kaber DB. Emotional state classification in patient-robot interaction using wavelet analysis and statistics-based feature selection. *IEEE Trans Human-Mach Syst* 2013 Jan;43(1):63-75. [doi: [10.1109/tsmca.2012.2210408](https://doi.org/10.1109/tsmca.2012.2210408)]
 263. Takadama K, Hirose K, Matsushima H, Hattori K, Nakajima N. Learning multiple band-pass filters for sleep stage estimation: towards care support for aged persons. *IEICE Trans Commun* 2010;E93-B(4):811-818. [doi: [10.1587/transcom.e93.b.811](https://doi.org/10.1587/transcom.e93.b.811)]
 264. Tamamizu K, Tokunaga S, Saiki S, Matsumoto S, Nakamura M, Yasuda K. Towards person-centered anomaly detection and support system for home dementia care. In: Proceedings of the International Conference on Digital Human Modeling and Applications in Health, Safety, Ergonomics and Risk Management. 2016 Presented at: International Conference on Digital Human Modeling and Applications in Health, Safety, Ergonomics and Risk Management; July 15-20, 2016; Las Vegas, NV, USA. [doi: [10.1007/978-3-319-40247-5_28](https://doi.org/10.1007/978-3-319-40247-5_28)]
 265. Tejaswini S, Sriraam N, Pradeep G. Cloud-Based Framework for Pain Scale Assessment in NICU- A Primitive Study with Infant Cries. In: Proceedings of the 3rd International Conference on Circuits, Control, Communication and Computing (I4C). 2018 Presented at: 3rd International Conference on Circuits, Control, Communication and Computing (I4C); Oct. 3-5, 2018; Bangalore, India. [doi: [10.1109/cimca.2018.8739712](https://doi.org/10.1109/cimca.2018.8739712)]
 266. Thomas A, Moore P, Evans C, Sharma M, Chima P, Vijay V. Emotive sensors for intelligent care systems: a heuristic discussion of autonomic wireless sensing systems. In: Proceedings of the Seventh International Conference on Complex, Intelligent, and Software Intensive Systems. 2013 Presented at: Seventh International Conference on Complex, Intelligent, and Software Intensive Systems; July 3-5, 2013; Taichung, Taiwan. [doi: [10.1109/cisis.2013.91](https://doi.org/10.1109/cisis.2013.91)]
 267. Tian X. Research on the realization path of smart old-age care in Suzhou based on intelligent recommendation system. *J Intell Fuzzy Syst* 2018 Oct 01;35(3):3051-3063. [doi: [10.3233/jifs-169660](https://doi.org/10.3233/jifs-169660)]
 268. Toda K, Shinomiya N. Machine learning-based fall detection system for the elderly using passive RFID sensor tags. In: Proceedings of the 13th International Conference on Sensing Technology (ICST). 2019 Presented at: 13th International Conference on Sensing Technology (ICST); Dec. 2-4, 2019; Sydney, NSW, Australia. [doi: [10.1109/icst46873.2019.9047732](https://doi.org/10.1109/icst46873.2019.9047732)]
 269. Todorovic N, Petrovic S. Bee colony optimization algorithm for nurse rostering. *IEEE Trans Syst Man Cybern Syst* 2013 Mar;43(2):467-473. [doi: [10.1109/tsmca.2012.2210404](https://doi.org/10.1109/tsmca.2012.2210404)]

270. Tokunaga S, Horiuchi H, Tamamizu K, Saiki S, Nakamura M, Yasuda K. Deploying service integration agent for personalized smart elderly care. In: Proceedings of the IEEE/ACIS 15th International Conference on Computer and Information Science (ICIS). 2016 Presented at: IEEE/ACIS 15th International Conference on Computer and Information Science (ICIS); June 26-29, 2016; Okayama, Japan. [doi: [10.1109/icis.2016.7550873](https://doi.org/10.1109/icis.2016.7550873)]
271. Urashima A, Nakamura M, Toriyama T, Oshima J, Nakagawa M, Nomura T. Preliminary results of pointing and calling detection system for nurses. In: Proceedings of the 11th Asia Pacific Conference on Computer Human Interaction. 2013 Presented at: APCHI '13: 11th Asia Pacific Conference on Computer Human Interaction; September 24 - 27, 2013; Bangalore India. [doi: [10.1145/2525194.2525273](https://doi.org/10.1145/2525194.2525273)]
272. Uronen L, Moen H, Teperi S, Martimo K, Hartiala J, Salanterä S. Towards automated detection of psychosocial risk factors with text mining. *Occup Med (Lond)* 2020 May 27;70(3):203-206. [doi: [10.1093/occmed/kqaa022](https://doi.org/10.1093/occmed/kqaa022)] [Medline: [32086511](https://pubmed.ncbi.nlm.nih.gov/32086511/)]
273. Vaquerizo M, Herrero A, Corchado E. Visual analysis of nurse rostering solutions through a bio-inspired intelligent model Publisher: IEEE Cite This PDF. In: Proceedings of the 11th International Conference on Intelligent Systems Design and Applications. 2011 Presented at: 11th International Conference on Intelligent Systems Design and Applications; Nov. 22-24, 2011; Cordoba, Spain. [doi: [10.1109/isda.2011.6121660](https://doi.org/10.1109/isda.2011.6121660)]
274. Vázquez-Santacruz E, Cruz-Santos W, Gamboa-Zúñiga M. Design and implementation of an intelligent system for controlling a robotic hospital bed for patient care assistance. *Computación y Sistemas* 2015 Oct 04;19(3):A. [doi: [10.13053/cys-19-3-2013](https://doi.org/10.13053/cys-19-3-2013)]
275. Veyron J, Friocourt P, Jeanjean O, Luquel L, Bonifas N, Denis F, et al. Home care aides' observations and machine learning algorithms for the prediction of visits to emergency departments by older community-dwelling individuals receiving home care assistance: a proof of concept study. *PLoS One* 2019;14(8):e0220002 [FREE Full text] [doi: [10.1371/journal.pone.0220002](https://doi.org/10.1371/journal.pone.0220002)] [Medline: [31408458](https://pubmed.ncbi.nlm.nih.gov/31408458/)]
276. Volrathongchai K. Predicting Falls Among the Elderly Residing in Long-term Care Facilities Using Knowledge Discovery in Databases. Madison, WI, USA: University of Wisconsin - Madison; 2004:1-198.
277. Vuono A, Luperto M, Banfi J, Basilico N, Borghese N, Sioutis M. Seeking prevention of cognitive decline in elders via activity suggestion by a virtual caregiver (Demonstration). In: 17th International Conference on Autonomous Agents and Multiagent Systems (AAMAS). 2018 Presented at: 17th International Conference on Autonomous Agents and Multiagent Systems (AAMAS); July 10 - 15, 2018; Stockholm Sweden p. 1835-1837.
278. Wai A, Devi S, Biswas J, Panda S. Pervasive Intelligence System to Enable Safety and Assistance in Kitchen for Home-Alone Elderly. In: Proceedings of the International Conference on Smart Homes and Health Telematics. 2011 Presented at: International Conference on Smart Homes and Health Telematics; June 20-22, 2011; Montreal, QC, Canada. [doi: [10.1007/978-3-642-21535-3_41](https://doi.org/10.1007/978-3-642-21535-3_41)]
279. Wai A, Yuan-Wei K, Fook F, Jayach, ran M, Biswas J. Sleeping patterns observation for bedsoresbed-side falls prevention. In: Proceedings of the Annual International Conference of the IEEE Engineering in MedicineBiology Society. 2009 Presented at: Annual International Conference of the IEEE Engineering in MedicineBiology Society; Sept. 3-6, 2009; Minneapolis, MN, USA. [doi: [10.1109/iembs.2009.5335385](https://doi.org/10.1109/iembs.2009.5335385)]
280. Wang P, Low KH, Tani JW, Chandra T. Initial study on a home-based floor-mat system for fall prevention of elderly based on gait analysis. *Int J Inf Acquisition* 2011 Nov 20;07(02):135-149. [doi: [10.1142/s0219878910002129](https://doi.org/10.1142/s0219878910002129)]
281. Wei Z, Ju Z, Chun X, Hua J, Jin P. An automatic electronic nursing records analysis system based on the text classification and machine learning. In: Proceedings of the 5th International Conference on Intelligent Human-Machine Systems and Cybernetics. 2013 Presented at: 5th International Conference on Intelligent Human-Machine Systems and Cybernetics; Aug. 26-27, 2013; Hangzhou, China. [doi: [10.1109/ihmsc.2013.265](https://doi.org/10.1109/ihmsc.2013.265)]
282. Weimin H, Tuan KC, Haizhou L, Tian SK, Jit B. Scream detection for home applications. In: Proceedings of the 5th IEEE Conference on Industrial Electronics and Applications. 2010 Presented at: 5th IEEE Conference on Industrial Electronics and Applications; June 15-17, 2010; Taichung, Taiwan p. 15-17. [doi: [10.1109/iciea.2010.5515397](https://doi.org/10.1109/iciea.2010.5515397)]
283. Weisenberg J, Cuddihy P, Rajiv V. Augmenting motion sensing to improve detection of periods of unusual inactivity. In: Proceedings of the 2nd International Workshop on Systems and Networking Support for Health Care and Assisted Living Environments. 2008 Presented at: HealthNet '08: 2nd International Workshop on Systems and Networking Support for Health Care and Assisted Living Environments; June 17, 2008; Breckenridge Colorado. [doi: [10.1145/1515747.1515751](https://doi.org/10.1145/1515747.1515751)]
284. Westra BL, Peterson JJ. Big data and perioperative nursing. *AORN J* 2016 Oct;104(4):286-292. [doi: [10.1016/j.aorn.2016.07.009](https://doi.org/10.1016/j.aorn.2016.07.009)] [Medline: [27692075](https://pubmed.ncbi.nlm.nih.gov/27692075/)]
285. Wickramasinghe A, Ranasinghe DC, Fumeaux C, Hill KD, Visvanathan R. Sequence learning with passive RFID sensors for real-time bed-egress recognition in older people. *IEEE J Biomed Health Inform* 2017 Jul;21(4):917-929. [doi: [10.1109/jbhi.2016.2576285](https://doi.org/10.1109/jbhi.2016.2576285)]
286. Wingrave C, Rowe M, Greenstein S. WIP: Designing smart systems to support @Work caregiver needs. Nursing Faculty Publications. 2012. URL: https://digitalcommons.usf.edu/nur_facpub/73/ [accessed 2021-11-18]
287. Wiratanaya A, Lyons M, Butko N, Abe S. iMime: an interactive character animation system for use in dementia care. In: Proceedings of the 12th international conference on Intelligent user interfaces. 2007 Presented at: IUI '07: 12th international conference on Intelligent user interfaces; January 28 - 31, 2007; Honolulu, Hawaii, USA. [doi: [10.1145/1216295.1216342](https://doi.org/10.1145/1216295.1216342)]

288. Wong B, Ho G, Tsui E. Development of an intelligent e-healthcare system for the domestic care industry. *Ind Manag Data Syst* 2017 Aug 14;117(7):1426-1445. [doi: [10.1108/imds-08-2016-0342](https://doi.org/10.1108/imds-08-2016-0342)]
289. Wu L, Lu J, Zhang T, Gong J. Robot-assisted intelligent emergency system for individual elderly independent living. In: *Proceedings of the IEEE Global Humanitarian Technology Conference (GHTC)*. 2016 Presented at: IEEE Global Humanitarian Technology Conference (GHTC); Oct. 13-16, 2016; Seattle, WA, USA. [doi: [10.1109/ghtc.2016.7857344](https://doi.org/10.1109/ghtc.2016.7857344)]
290. Wu Q, Zhao W. Machine learning based human activity detection in a privacy-aware compliance tracking system. In: *Proceedings of the IEEE International Conference on Electro/Information Technology (EIT)*. 2018 Presented at: IEEE International Conference on Electro/Information Technology (EIT); May 3-5, 2018; Rochester, MI, USA. [doi: [10.1109/eit.2018.8500131](https://doi.org/10.1109/eit.2018.8500131)]
291. Xu T, Zhou Y, Ma Z, Duffy V. AtHoCare: an intelligent elder care at home system. In: *Proceedings of the International Conference on Digital Human Modeling and Applications in Health, Safety, Ergonomics and Risk Management*. 2016 Presented at: International Conference on Digital Human Modeling and Applications in Health, Safety, Ergonomics and Risk Management; July 15-20, 2016; Las Vegas, NV, USA. [doi: [10.1007/978-3-319-40247-5_30](https://doi.org/10.1007/978-3-319-40247-5_30)]
292. Yamada Y, Saito T, Kawasaki S, Ikeda D, Katagiri M, Nishimura M. A deep-learning-based method of estimating water intake. In: *Proceedings of the IEEE 41st Annual Computer Software and Applications Conference (COMPSAC)*. 2017 Jul Presented at: IEEE 41st Annual Computer Software and Applications Conference (COMPSAC); July 4-8, 2017; Turin, Italy. [doi: [10.1109/compsac.2017.14](https://doi.org/10.1109/compsac.2017.14)]
293. Yamazaki K, Yamazaki A, Ikeda K, Liu C, Fukushima M, Kobayashi Y, et al. "I'll Be There Next". *ACM Trans Interact Intell Syst* 2016 Jan 07;5(4):1-20. [doi: [10.1145/2844542](https://doi.org/10.1145/2844542)]
294. Yang C, Lu M, Tseng S, Fu L. A companion robot for daily care of elders based on homeostasis. In: *Proceedings of the 56th Annual Conference of the Society of Instrument and Control Engineers of Japan (SICE)*. 2017 Presented at: 56th Annual Conference of the Society of Instrument and Control Engineers of Japan (SICE); Sept. 19-22, 2017; Kanazawa, Japan. [doi: [10.23919/sice.2017.8105748](https://doi.org/10.23919/sice.2017.8105748)]
295. Yang J, Li J, Bai D, Sun B, Wang S. Assistive standing of omni-directional mobile rehabilitation training robot based on support vector regression algorithm. In: *Proceedings of the IEEE International Conference on Information and Automation (ICIA)*. 2016 Presented at: IEEE International Conference on Information and Automation (ICIA); Aug. 1-3, 2016; Ningbo, China. [doi: [10.1109/icinfa.2016.7831974](https://doi.org/10.1109/icinfa.2016.7831974)]
296. Yang J, Kwon O, Lim C, Kwon D. Human-robot interaction-based intention sharing of assistant robot for elderly people. In: *Intelligent Autonomous Systems 12. Advances in Intelligent Systems and Computing*. Berlin, Heidelberg: Springer; 2013:283-291.
297. Yeung S, Rinaldo F, Jopling J, Liu B, Mehra R, Downing NL, et al. A computer vision system for deep learning-based detection of patient mobilization activities in the ICU. *NPJ Digit Med* 2019;2:11 [FREE Full text] [doi: [10.1038/s41746-019-0087-z](https://doi.org/10.1038/s41746-019-0087-z)] [Medline: [31304360](https://pubmed.ncbi.nlm.nih.gov/31304360/)]
298. Yokota S, Endo M, Ohe K. Establishing a classification system for high fall-risk among inpatients using support vector machines. *Comput Inform Nurs* 2017 Aug;35(8):408-416. [doi: [10.1097/CIN.0000000000000332](https://doi.org/10.1097/CIN.0000000000000332)] [Medline: [28800580](https://pubmed.ncbi.nlm.nih.gov/28800580/)]
299. Yokota S, Ohe K. Construction and evaluation of FiND, a fall risk prediction model of inpatients from nursing data. *Jpn J Nurs Sci* 2016 Apr;13(2):247-255. [doi: [10.1111/jjns.12103](https://doi.org/10.1111/jjns.12103)] [Medline: [27040735](https://pubmed.ncbi.nlm.nih.gov/27040735/)]
300. Yousefi R, Ostadabbas S, Faezipour M, Nourani M, Ng V, Tamil L. A smart bed platform for monitoring and ulcer prevention. In: *Proceedings of the 4th International Conference on Biomedical Engineering and Informatics (BMEI)*. 2011 Presented at: 4th International Conference on Biomedical Engineering and Informatics (BMEI); Oct. 15-17, 2011; Shanghai, China. [doi: [10.1109/bmei.2011.6098589](https://doi.org/10.1109/bmei.2011.6098589)]
301. Yu B, Chan K. Discovering knowledge by behavioral analytics for elderly care. In: *Proceedings of the IEEE International Conference on Big Knowledge (ICBK)*. 2017 Presented at: 2017 IEEE International Conference on Big Knowledge (ICBK); Aug. 9-10, 2017; Hefei, China. [doi: [10.1109/icbk.2017.18](https://doi.org/10.1109/icbk.2017.18)]
302. Yu JY, Jeong GY, Jeong OS, Chang DK, Cha WC. Machine learning and initial nursing assessment-based triage system for emergency department. *Healthc Inform Res* 2020 Jan;26(1):13-19 [FREE Full text] [doi: [10.4258/hir.2020.26.1.13](https://doi.org/10.4258/hir.2020.26.1.13)] [Medline: [32082696](https://pubmed.ncbi.nlm.nih.gov/32082696/)]
303. Yu M, Rhuma A, Naqvi SM, Wang L, Chambers J. A posture recognition-based fall detection system for monitoring an elderly person in a smart home environment. *IEEE Trans Inform Technol Biomed* 2012 Nov;16(6):1274-1286. [doi: [10.1109/titb.2012.2214786](https://doi.org/10.1109/titb.2012.2214786)]
304. Yu M, Yu Y, Rhuma A, Naqvi SM, Wang L, Chambers JA. An online one class support vector machine-based person-specific fall detection system for monitoring an elderly individual in a room environment. *IEEE J Biomed Health Inform* 2013 Nov;17(6):1002-1014. [doi: [10.1109/jbhi.2013.2274479](https://doi.org/10.1109/jbhi.2013.2274479)]
305. Yu S, Yang Y, Hauptmann A. Harry Potter's Marauder's Map: localizing and tracking multiple persons-of-interest by nonnegative discretization. In: *Proceedings of the IEEE Conference on Computer Vision and Pattern Recognition*. 2013 Presented at: 2013 IEEE Conference on Computer Vision and Pattern Recognition; June 23-28, 2013; Portland, OR, USA. [doi: [10.1109/cvpr.2013.476](https://doi.org/10.1109/cvpr.2013.476)]
306. Yuan W, Cao N, Wang Y, Li C, Wang X, Zhou L. The research of elderly health-care in wireless sensor networks. In: *Proceedings of the IEEE International Conference on Computational Science and Engineering (CSE) and IEEE International*

- Conference on Embedded and Ubiquitous Computing (EUC). 2017 Presented at: IEEE International Conference on Computational Science and Engineering (CSE) and IEEE International Conference on Embedded and Ubiquitous Computing (EUC); July 21-24, 2017; Guangzhou, China. [doi: [10.1109/cse-euc.2017.235](https://doi.org/10.1109/cse-euc.2017.235)]
307. Zejda D, Callaghan V, Kameas A, Egerton S, Satoh I, Weber M. Deep design for ambient intelligence: toward acceptable appliances for higher quality of life of the elderly. In: Proceedings of the Sixth International Conference on Intelligent Environments. 2010 Presented at: 2010 Sixth International Conference on Intelligent Environments; July 19-21, 2010; Kuala Lumpur, Malaysia. [doi: [10.1109/ie.2010.57](https://doi.org/10.1109/ie.2010.57)]
 308. Zeng Y, Chang W. Estimation of sleep status based on wearable free device for elderly care. In: Proceedings of the IEEE 5th Global Conference on Consumer Electronics. 2016 Presented at: IEEE 5th Global Conference on Consumer Electronics; Oct. 11-14, 2016; Kyoto, Japan. [doi: [10.1109/gcce.2016.7800530](https://doi.org/10.1109/gcce.2016.7800530)]
 309. Zeng Y, Liao K, Wang C, Lin Y, Chang W. Implementation of post-operative wound analytics. In: Proceedings of the IEEE International Conference on Consumer Electronics - Taiwan (ICCE-TW). 2017 Jun Presented at: IEEE International Conference on Consumer Electronics - Taiwan (ICCE-TW); June 12-14, 2017; Taipei, Taiwan. [doi: [10.1109/icce-china.2017.7991011](https://doi.org/10.1109/icce-china.2017.7991011)]
 310. Zhou X, Xu J, Zhao Y. Machine learning methods for anticipating the psychological distress in patients with Alzheimer's disease. *Australas Phys Eng Sci Med* 2006 Dec;29(4):303-309. [doi: [10.1007/bf03178395](https://doi.org/10.1007/bf03178395)]
 311. Page MJ, McKenzie JE, Bossuyt PM, Boutron I, Hoffmann TC, Mulrow CD, et al. The PRISMA 2020 statement: an updated guideline for reporting systematic reviews. *Br Med J* 2021 Mar 29;372:n71 [FREE Full text] [doi: [10.1136/bmj.n71](https://doi.org/10.1136/bmj.n71)] [Medline: [33782057](https://pubmed.ncbi.nlm.nih.gov/33782057/)]
 312. Alderden J, Pepper GA, Wilson A, Whitney JD, Richardson S, Butcher R, et al. Predicting pressure injury in critical care patients: a machine-learning model. *Am J Crit Care* 2018 Nov 01;27(6):461-468 [FREE Full text] [doi: [10.4037/ajcc2018525](https://doi.org/10.4037/ajcc2018525)] [Medline: [30385537](https://pubmed.ncbi.nlm.nih.gov/30385537/)]
 313. Zhu X, Zhou X, Chen W, Kitamura K, Nemoto T. Estimation of sleep quality of residents in nursing homes using an internet-based automatic monitoring system. In: Proceedings of the IEEE 11th Intl Conf on Ubiquitous Intelligence and Computing and IEEE 11th Intl Conf on Autonomic and Trusted Computing and IEEE 14th Intl Conf on Scalable Computing and Communications and Its Associated Workshops. 2014 Presented at: IEEE 11th Intl Conf on Ubiquitous Intelligence and Computing and IEEE 11th Intl Conf on Autonomic and Trusted Computing and IEEE 14th Intl Conf on Scalable Computing and Communications and Its Associated Workshops; Dec. 9-12, 2014; Bali, Indonesia. [doi: [10.1109/uic-atc-scalcom.2014.138](https://doi.org/10.1109/uic-atc-scalcom.2014.138)]
 314. Wai A, Kenneth L, Yen A, Phua C, Tiberghien T, Aloulou H, et al. Challenges, Experiences and Lessons Learned from Deploying Patient Monitoring and Assistance System at Dementia Care Hostel. Berlin, Heidelberg: Springer; 2013:292-297.
 315. Seibert K, Domhoff D, Huter K, Krick T, Rothgang H, Wolf-Ostermann K. Application of digital technologies in nursing practice: Results of a mixed methods study on nurses' experiences, needs and perspectives. *Z Evid Fortbild Qual Gesundhwes* 2020 Dec;158-159:94-106 [FREE Full text] [doi: [10.1016/j.zefq.2020.10.010](https://doi.org/10.1016/j.zefq.2020.10.010)] [Medline: [33223491](https://pubmed.ncbi.nlm.nih.gov/33223491/)]
 316. Poncette A, Mosch L, Spies C, Schmieding M, Schiefenhövel F, Krampe H, et al. Improvements in patient monitoring in the intensive care unit: survey study. *J Med Internet Res* 2020 Jun 19;22(6):e19091 [FREE Full text] [doi: [10.2196/19091](https://doi.org/10.2196/19091)] [Medline: [32459655](https://pubmed.ncbi.nlm.nih.gov/32459655/)]
 317. Greenhalgh T, Wherton J, Papoutsi C, Lynch J, Hughes G, A'Court C, et al. Beyond adoption: a new framework for theorizing and evaluating nonadoption, abandonment, and challenges to the scale-up, spread, and sustainability of health and care technologies. *J Med Internet Res* 2017 Nov 01;19(11):e367 [FREE Full text] [doi: [10.2196/jmir.8775](https://doi.org/10.2196/jmir.8775)] [Medline: [29092808](https://pubmed.ncbi.nlm.nih.gov/29092808/)]
 318. Ammenwerth E, Iller C, Mahler C. IT-adoption and the interaction of task, technology and individuals: a fit framework and a case study. *BMC Med Inform Decis Mak* 2006 Jan 09;6(1):3 [FREE Full text] [doi: [10.1186/1472-6947-6-3](https://doi.org/10.1186/1472-6947-6-3)] [Medline: [16401336](https://pubmed.ncbi.nlm.nih.gov/16401336/)]
 319. Ethics guidelines for trustworthy AI. High-Level Expert Group on Artificial Intelligence set up by the European Commission (AI-HLEG). 2019. URL: <https://wayback.archive-it.org/12090/20201227221227/https://ec.europa.eu/digital-single-market/en/news/ethics-guidelines-trustworthy-ai> [accessed 2021-11-18]
 320. Hsu W, Baumgartner C, Deserno T, Section Editors for the IMIA Yearbook Section on Sensors, Signals, Imaging Informatics. Advancing artificial intelligence in sensors, signals, and imaging informatics. *Yearb Med Inform* 2019 Aug;28(1):115-117 [FREE Full text] [doi: [10.1055/s-0039-1677943](https://doi.org/10.1055/s-0039-1677943)] [Medline: [31419823](https://pubmed.ncbi.nlm.nih.gov/31419823/)]
 321. Choudhury A, Asan O. Role of artificial intelligence in patient safety outcomes: systematic literature review. *JMIR Med Inform* 2020 Jul 24;8(7):e18599 [FREE Full text] [doi: [10.2196/18599](https://doi.org/10.2196/18599)] [Medline: [32706688](https://pubmed.ncbi.nlm.nih.gov/32706688/)]
 322. Rong G, Mendez A, Assi E, Zhao B, Sawan M. Artificial intelligence in healthcare: review and prediction case studies. *Engineering* 2020 Mar;6(3):291-301. [doi: [10.1016/j.eng.2019.08.015](https://doi.org/10.1016/j.eng.2019.08.015)]
 323. Amisha, Malik P, Pathania M, Rathaur VK. Overview of artificial intelligence in medicine. *J Family Med Prim Care* 2019 Jul;8(7):2328-2331 [FREE Full text] [doi: [10.4103/jfmpc.jfmpc_440_19](https://doi.org/10.4103/jfmpc.jfmpc_440_19)] [Medline: [31463251](https://pubmed.ncbi.nlm.nih.gov/31463251/)]

Abbreviations

AI: artificial intelligence

ELSI: ethical, legal, and social implication

ICU: intensive care unit

LOE: level of evidence

LOS: length of stay

ML: machine learning

NLP: natural language processing

PRISMA: Preferred Reporting Items for Systematic Reviews and Meta-Analyses

Edited by R Kukafka; submitted 16.12.20; peer-reviewed by M Schmieding, V Montmirail, V Franzoni, JA Benítez-Andrades; comments to author 09.03.21; revised version received 21.05.21; accepted 08.10.21; published 29.11.21

Please cite as:

Seibert K, Domhoff D, Bruch D, Schulte-Althoff M, Fürstenau D, Biessmann F, Wolf-Ostermann K

Application Scenarios for Artificial Intelligence in Nursing Care: Rapid Review

J Med Internet Res 2021;23(11):e26522

URL: <https://www.jmir.org/2021/11/e26522>

doi: [10.2196/26522](https://doi.org/10.2196/26522)

PMID:

©Kathrin Seibert, Dominik Domhoff, Dominik Bruch, Matthias Schulte-Althoff, Daniel Fürstenau, Felix Biessmann, Karin Wolf-Ostermann. Originally published in the Journal of Medical Internet Research (<https://www.jmir.org>), 29.11.2021. This is an open-access article distributed under the terms of the Creative Commons Attribution License (<https://creativecommons.org/licenses/by/4.0/>), which permits unrestricted use, distribution, and reproduction in any medium, provided the original work, first published in the Journal of Medical Internet Research, is properly cited. The complete bibliographic information, a link to the original publication on <https://www.jmir.org/>, as well as this copyright and license information must be included.